

Product datasheet for **TA425003**

NLK Rabbit Monoclonal Antibody [Clone ID: 24GB585]

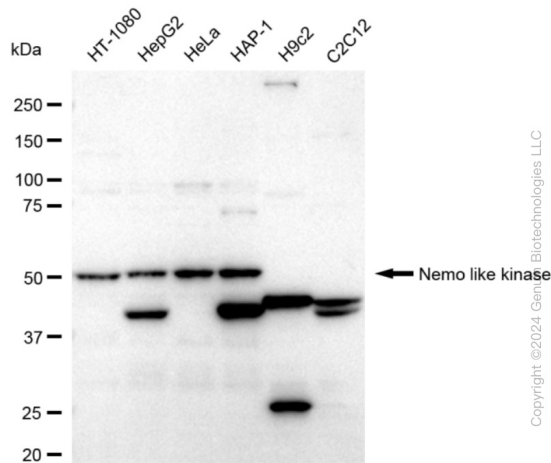
Product data:

Product Type:	Primary Antibodies
Clone Name:	24GB585
Applications:	FC, ICC, WB
Recommended Dilution:	Western Blotting (WB): 1:1,000-1:5,000, Flow Cytometry (FCM): 1:2,000, Immunocytochemistry (IC): 1:100-1:1,000
Reactivity:	Human
Host:	Rabbit
Isotype:	IgG
Clonality:	Monoclonal
Immunogen:	A synthesized peptide derived from human NLK
Formulation:	Supplied in PBS (pH 7.4) containing 50% glycerol, and 0.02% sodium azide.
Concentration:	Lot dependent
Purification:	Affinity Purified
Conjugation:	Unconjugated
Stability:	Store at -20 °C for one year.
Database Link:	Q9UBE8
Synonyms:	EC 2.7.11; EC 2.7.11.24; LAK1; Nemo-Like Kinase; Nemo Like Kinase; Protein LAK1; Serine/Threonine-Protein Kinase NLK

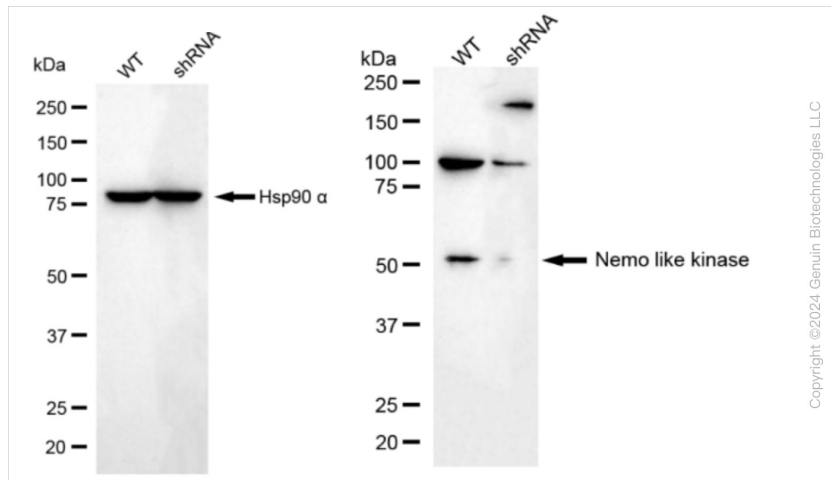


[View online »](#)

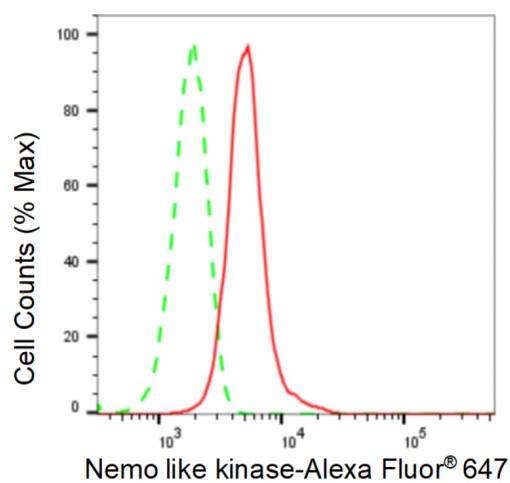
Product images:



Western blotting analysis using anti-Nemo like kinase antibody . Total cell lysates (30 µg) from various cell lines were loaded and separated by SDS-PAGE. The blot was incubated with anti-Nemo like kinase antibody and HRP-conjugated goat anti-rabbit secondary antibody respectively. Image was developed using anti-FeQ™ ECL Substrate Kit .

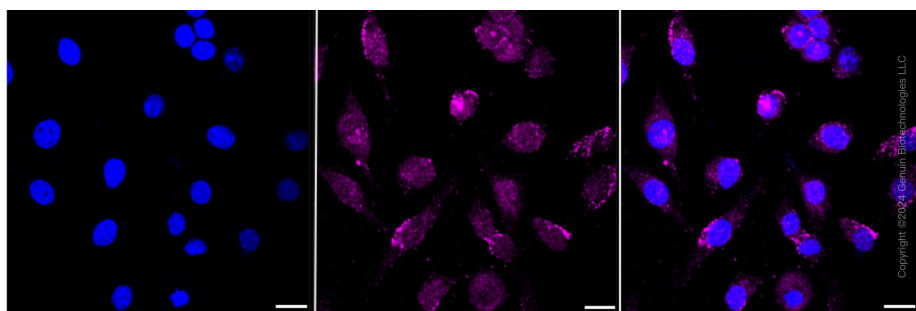


Western blotting analysis using anti-Nemo like kinase antibody . Nemo like kinase expression in wild type (WT) and Nemo like kinase shRNA knockdown (KD) HT-1080 cells with 20 µg of total cell lysates . Hsp90 α serves as a loading control. The blot was incubated with anti-Nemo like kinase antibody and HRP-conjugated goat anti-rabbit secondary antibody respectively. Image was developed using anti-NaQ™ ECL Substrate Kit .



Copyright ©2024 Genuin Biotechnologies LLC

Flow cytometric analysis of Nemo like kinase expression in HeLa cells using anti-Nemo like kinase antibody . Green, isotype control; red, Nemo like kinase.



Immunocytochemical staining of HeLa cells with anti-Nemo like kinase antibody . Nuclei were stained blue with DAPI; Nemo like kinase was stained magenta with Alexa Fluor® 647. Images were taken using anti-Leica stellaris 5. Protein abundance based on laser Intensity and smart gain: Medium. Scale bar: 20 µm.