

Product datasheet for **TA425002**

NEK7 Rabbit Monoclonal Antibody [Clone ID: 23GB2885]

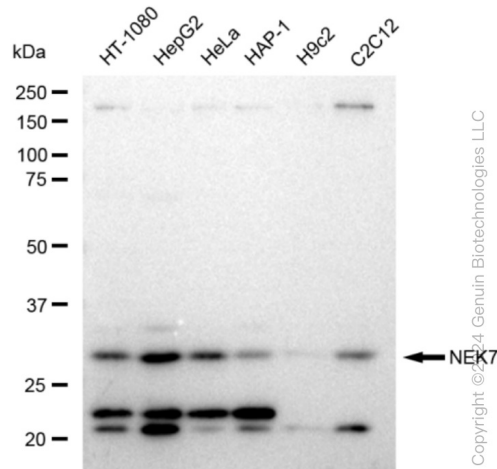
Product data:

Product Type:	Primary Antibodies
Clone Name:	23GB2885
Applications:	FC, ICC, WB
Recommended Dilution:	Western Blotting (WB): 1:1,000-1:5,000, Flow Cytometry (FCM): 1:2,000, Immunocytochemistry (IC): 1:100-1:1,000
Reactivity:	Human, Mouse, Rat
Host:	Rabbit
Isotype:	IgG
Clonality:	Monoclonal
Immunogen:	A synthesized peptide derived from human NEK7
Formulation:	Supplied in PBS (pH 7.4) containing 50% glycerol, and 0.02% sodium azide.
Concentration:	Lot dependent
Purification:	Affinity Purified
Conjugation:	Unconjugated
Stability:	Store at -20 °C for one year.
Database Link:	Q8TDX7
Synonyms:	EC 2.7.11.1; EC 2.7.11.34; Never In Mitosis A-Related Kinase 7; NIMA (Never In Mitosis Gene A)-Related Kinase 7; NimA-Related Protein Kinase 7; NIMA Related Kinase 7; Serine/Threonine-Protein Kinase Nek7

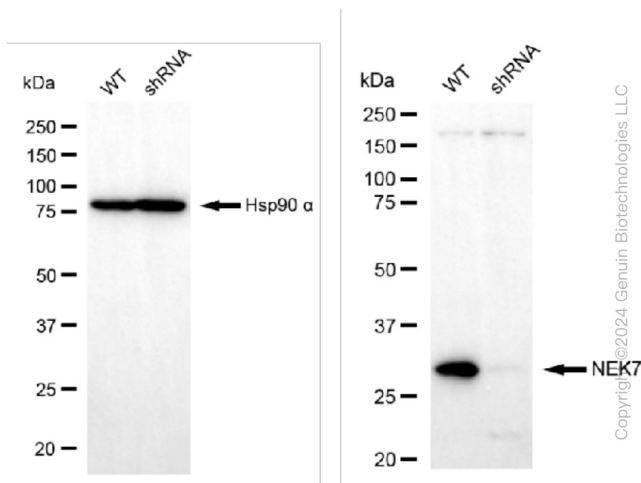


[View online »](#)

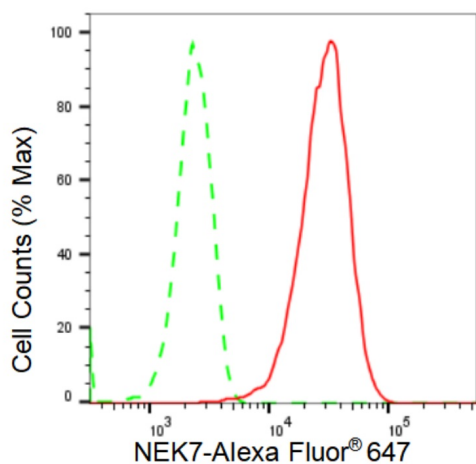
Product images:



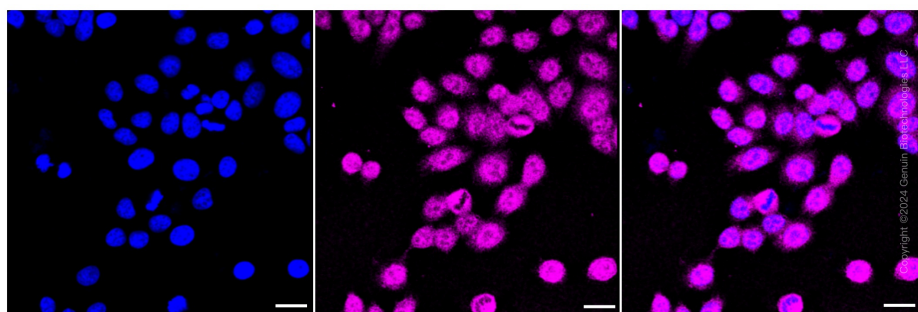
Western blotting analysis using anti-NEK7 antibody . Total cell lysates (30 µg) from various cell lines were loaded and separated by SDS-PAGE. The blot was incubated with anti-NEK7 antibody and HRP-conjugated goat anti-rabbit secondary antibody respectively. Image was developed using anti-FeQ™ ECL Substrate Kit .



Western blotting analysis using anti-NEK7 antibody . NEK7 expression in wild type (WT) and NEK7 shRNA knockdown (KD) HeLa cells with 30 µg of total cell lysates . Hsp90 α serves as a loading control. The blot was incubated with anti-NEK7 antibody and HRP-conjugated goat anti-rabbit secondary antibody respectively. Image was developed using anti-FeQ™ ECL Substrate Kit .



Flow cytometric analysis of NEK7 expression in HepG2 cells using anti-NEK7 antibody . Green, isotype control; red, NEK7.



Immunocytochemical staining of HepG2 cells with NEK7 antibody . Nuclei were stained blue with DAPI; NEK7 was stained magenta with Alexa Fluor® 647. Images were taken using anti-Leica stellaris 5. Protein abundance based on laser Intensity and smart gain: Medium. Scale bar: 20 μ m.