

Product datasheet for **TA424993**

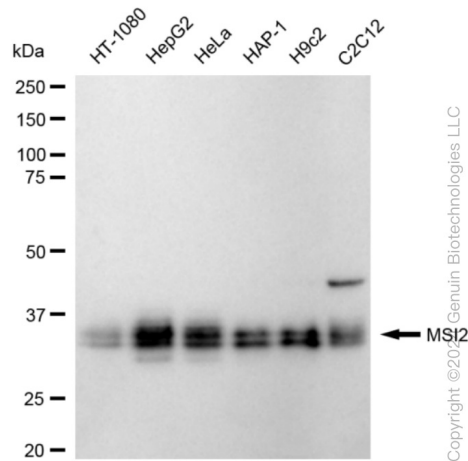
MSI2 Rabbit Monoclonal Antibody [Clone ID: 24GB225]

Product data:

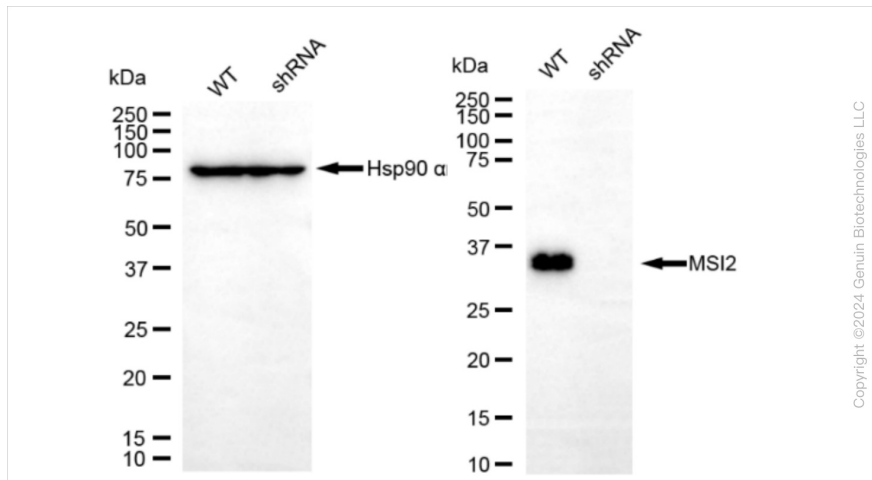
| | |
|-----------------------|---|
| Product Type: | Primary Antibodies |
| Clone Name: | 24GB225 |
| Applications: | FC, ICC, WB |
| Recommended Dilution: | Western Blotting (WB): 1:1,000-1:5,000, Flow Cytometry (FCM): 1:2,000, Immunocytochemistry (IC): 1:100-1:1,000 |
| Reactivity: | Human, Mouse, Rat |
| Host: | Rabbit |
| Isotype: | IgG |
| Clonality: | Monoclonal |
| Immunogen: | A synthesized peptide derived from human MSI2 |
| Formulation: | Supplied in PBS (pH 7.4) containing 50% glycerol, and 0.02% sodium azide. |
| Concentration: | Lot dependent |
| Purification: | Affinity Purified |
| Conjugation: | Unconjugated |
| Stability: | Store at -20 °C for one year. |
| Database Link: | Q96DH6 |
| Synonyms: | MSI2H; Musashi-2; Musashi Homolog 2; Musashi Homolog 2 (Drosophila); Musashi RNA Binding Protein 2; RNA-Binding Protein Musashi Homolog 2 |

[View online »](#)

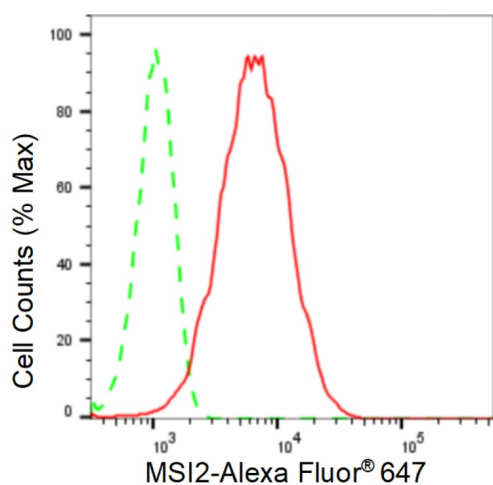
Product images:



Western blotting analysis using anti-MSI2 antibody . Total cell lysates (30 µg) from various cell lines were loaded and separated by SDS-PAGE. The blot was incubated with anti-MSI2 antibody and HRP-conjugated goat anti-rabbit secondary antibody respectively. Image was developed using anti-FeQ™ ECL Substrate Kit .

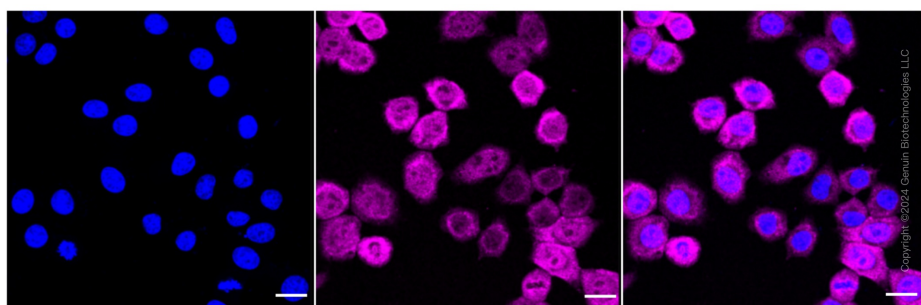


Western blotting analysis using anti-MSI2 antibody . MSI2 expression in wild type (WT) and MSI2 shRNA knockdown (KD) HeLa cells with 20 µg of total cell lysates . β-Tubulin serves as a loading control. The blot was incubated with anti-MSI2 antibody and HRP-conjugated goat anti-rabbit secondary antibody respectively. Image was developed using anti-NaQ™ ECL Substrate Kit .



Copyright ©2024 Genuin Biotechnologies LLC

Flow cytometric analysis of MSI2 expression in HepG2 cells using anti-MSI2 antibody . Green, isotype control; red, MSI2.



Immunocytochemical staining of HepG2 cells with anti-MSI2 antibody . Nuclei were stained blue with DAPI; MSI2 was stained magenta with Alexa Fluor® 647. Images were taken using anti-Leica stellaris 5. Protein abundance based on laser Intensity and smart gain: High. Scale bar: 20 μ m.