

## Product datasheet for **TA424983**

### MRPS15 Rabbit Monoclonal Antibody [Clone ID: 24GB70]

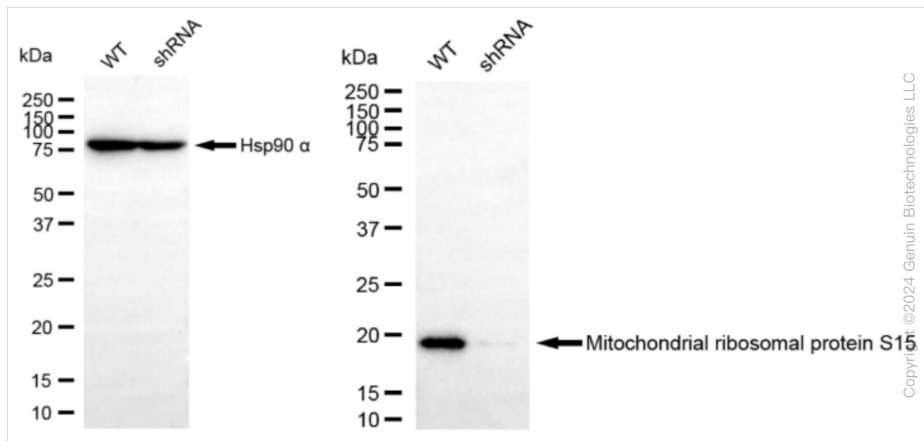
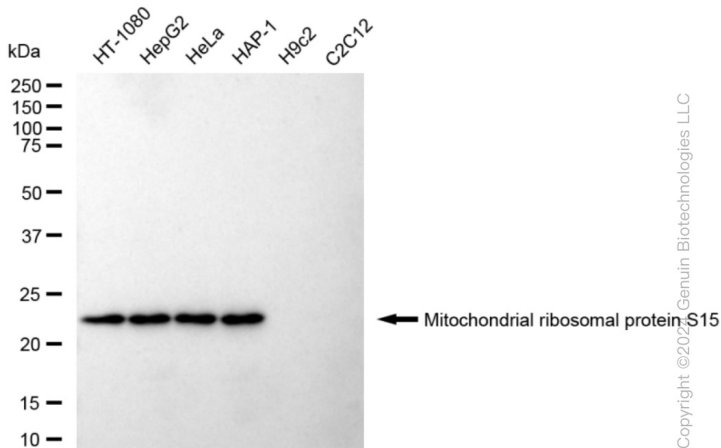
#### Product data:

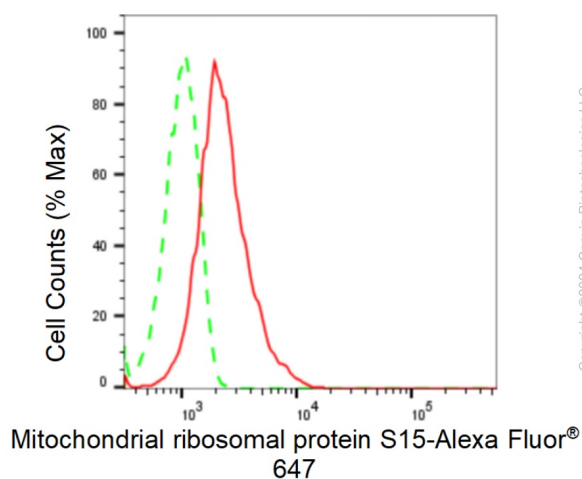
Product Type:	Primary Antibodies
Clone Name:	24GB70
Applications:	FC, ICC, WB
Recommended Dilution:	Western Blotting (WB): 1:1,000-1:5,000, Flow Cytometry (FCM): 1:2,000, Immunocytochemistry (IC): 1:100-1:1,000
Reactivity:	Human
Host:	Rabbit
Isotype:	IgG
Clonality:	Monoclonal
Immunogen:	A synthesized peptide derived from human MRPS15
Formulation:	Supplied in PBS (pH 7.4) containing 50% glycerol, and 0.02% sodium azide.
Concentration:	Lot dependent
Purification:	Affinity Purified
Conjugation:	Unconjugated
Stability:	Store at -20 °C for one year.
Database Link:	<a href="#">P82914</a>
Synonyms:	28S Ribosomal Protein S15, Mitochondrial; DC37; FLJ11564; Mitochondrial Ribosomal Protein S15; Mitochondrial Small Ribosomal Subunit Protein US15m; MPR-S15; MRP-S15; RPMS15; S15mt; Small Ribosomal Subunit Protein US15m; US15m



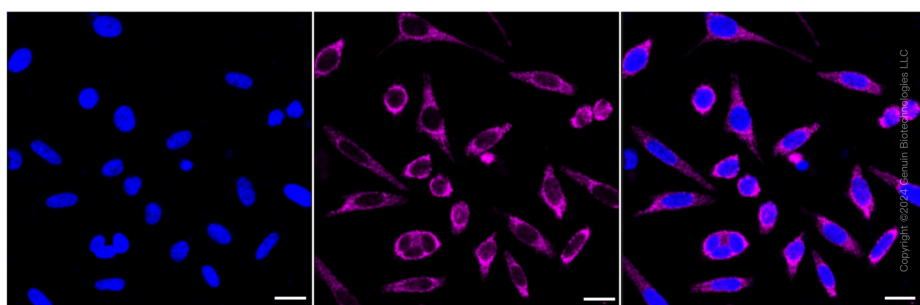
[View online »](#)

## Product images:





Flow cytometric analysis of Mitochondrial ribosomal protein S15 expression in HepG2 cells using anti-Mitochondrial ribosomal protein S15 antibody . Green, isotype control; red, Mitochondrial ribosomal protein S15.



Immunocytochemical staining of HepG2 cells with anti-Mitochondrial ribosomal protein S15 antibody . Nuclei were stained blue with DAPI; Mitochondrial ribosomal protein S15 was stained magenta with Alexa Fluor® 647. Images were taken using anti-Leica stellaris 5. Protein abundance based on laser Intensity and smart gain: Medium. Scale bar: 20  $\mu$ m.