

Product datasheet for **TA424981**

OGA Rabbit Monoclonal Antibody [Clone ID: 24GB6120]

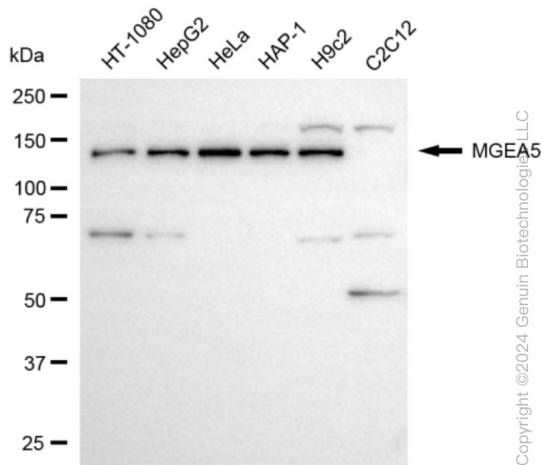
Product data:

Product Type:	Primary Antibodies
Clone Name:	24GB6120
Applications:	FC, ICC, WB
Recommended Dilution:	Western Blotting (WB): 1:1,000-1:5,000, Flow Cytometry (FCM): 1:2,000, Immunocytochemistry (IC): 1:100-1:1,000
Reactivity:	Human, Mouse, Rat
Host:	Rabbit
Isotype:	IgG
Clonality:	Monoclonal
Immunogen:	A synthesized peptide derived from human MGEA5
Formulation:	Supplied in PBS (pH 7.4) containing 50% glycerol, and 0.02% sodium azide.
Concentration:	Lot dependent
Purification:	Affinity Purified
Conjugation:	Unconjugated
Stability:	Store at -20 °C for one year.
Database Link:	Q60502
Synonyms:	Beta-Hexosaminidase; Beta-N-Acetylglucosaminidase; Beta-N-Acetylhexosaminidase; Bifunctional Protein NCOAT; EC 3.2.1.169; HEXC; Hyaluronidase In Meningioma; KIAA0679; MEA5; Meningioma-Expressed Antigen 5; Meningioma Expressed Antigen 5 (Hyaluronidase); MGEA5; N-Acetyl-Beta-D-Glucosaminidase; N-Acetyl-Beta-Glucosaminidase; NCOAT; Nuclear Cytoplasmic O-GlcNAcase And Acetyltransferase; O-GlcNAcase; OGA; Protein O-GlcNAcase

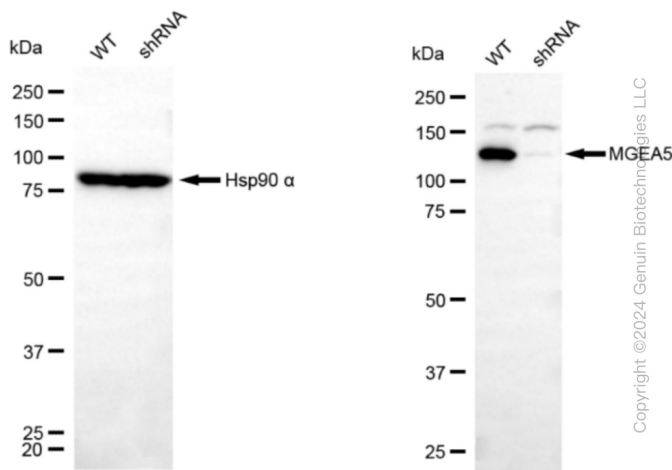


[View online »](#)

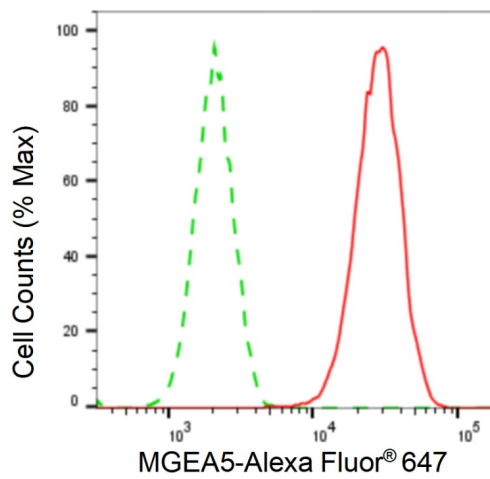
Product images:



Western blotting analysis using anti-MGEA5 antibody . Total cell lysates (30 µg) from various cell lines were loaded and separated by SDS-PAGE. The blot was incubated with anti-MGEA5 antibody and HRP-conjugated goat anti-rabbit secondary antibody respectively. Image was developed using anti-NaQ™ ECL Substrate Kit .

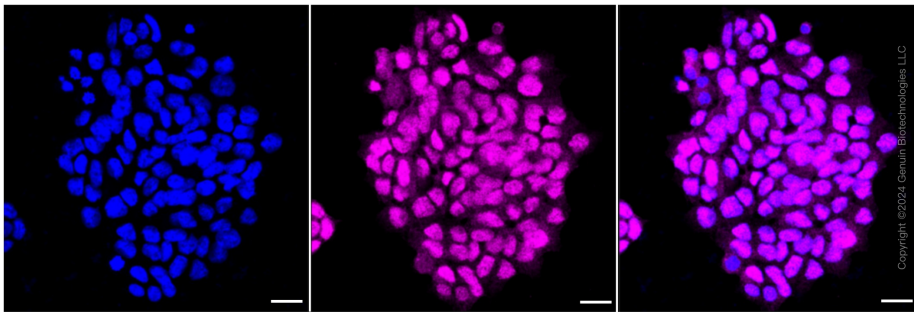


Western blotting analysis using anti-MGEA5 antibody . MGEA5 expression in wild-type (WT) and OGA shRNA knockdown (KD) HeLa cells with 20 µg of total cell lysates. Hsp90 α serves as a loading control. The blot was incubated with anti-MGEA5 antibody and HRP-conjugated goat anti-rabbit secondary antibody respectively. Image was developed using anti-NaQ™ ECL Substrate Kit . OGA, O-GlcNAcase.



Copyright ©2024 Genuin Biotechnologies LLC

Flow cytometric analysis of MGEA5 expression in HAP-1 cells using anti-MGEA5 antibody . Green, isotype control; red, MGEA5.



Immunocytochemical staining of HAP-1 cells with MGEA5 antibody . Nuclei were stained blue with DAPI; MGEA5 was stained magenta with Alexa Fluor® 647. Images were taken using anti-Leica stellaris 5. Protein abundance based on laser Intensity and smart gain: High. Scale bar: 20 µm.