

Product datasheet for **TA424965**

MCM6 Rabbit Monoclonal Antibody [Clone ID: 23GB2005]

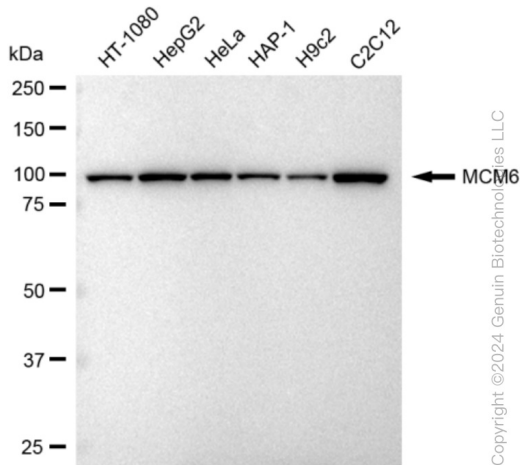
Product data:

Product Type:	Primary Antibodies
Clone Name:	23GB2005
Applications:	FC, ICC, WB
Recommended Dilution:	Western Blotting (WB): 1:1,000-1:5,000, Flow Cytometry (FCM): 1:2,000, Immunocytochemistry (IC): 1:100-1:1,000
Reactivity:	Human, Mouse, Rat
Host:	Rabbit
Isotype:	IgG
Clonality:	Monoclonal
Immunogen:	A synthesized peptide derived from human MCM6
Formulation:	Supplied in PBS (pH 7.4) containing 50% glycerol, and 0.02% sodium azide.
Concentration:	Lot dependent
Purification:	Affinity Purified
Conjugation:	Unconjugated
Stability:	Store at -20 °C for one year.
Database Link:	Q14566
Synonyms:	DNA Replication Licensing Factor MCM6; EC 3.6.4.12; MCG40308; MCM6; MCM6 Minichromosome Maintenance Deficient 6 (MIS5 Homolog, S. Pombe); MCM6 Minichromosome Maintenance Deficient 6 (MIS5 Homolog, S. Pombe) (S. Cerevisiae); Minichromosome Maintenance Complex Component 6; Minichromosome Maintenance Deficient (Mis5, S. Pombe) 6; Minichromosome Maintenance Deficient 6 Homolog (S. Cerevisiae); MIS5; Mis5; MIS5 Homolog (S.Pombe); P105MCM

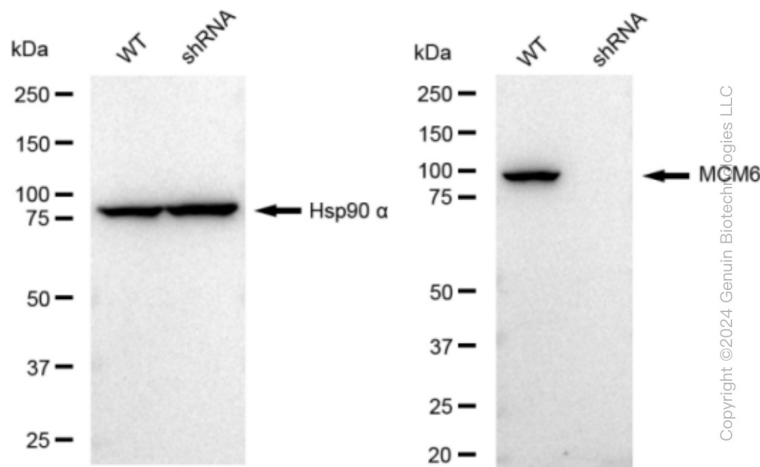


[View online »](#)

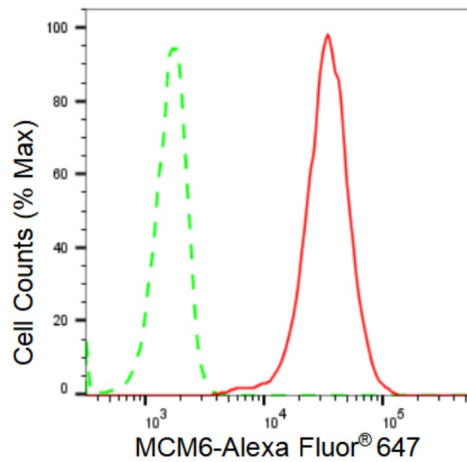
Product images:



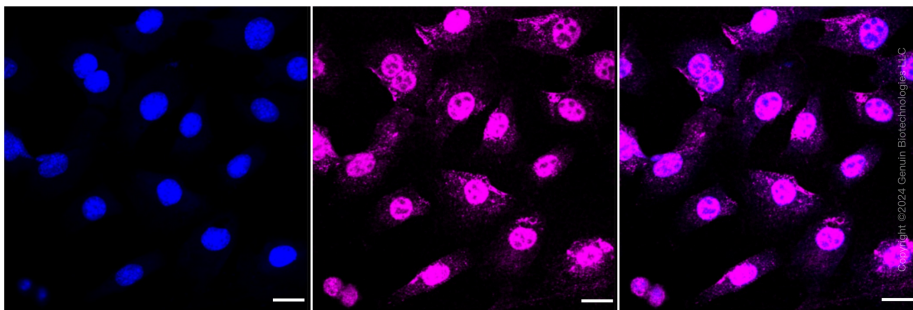
Western blotting analysis using anti-MCM6 antibody . Total cell lysates (30 µg) from various cell lines were loaded and separated by SDS-PAGE. The blot was incubated with anti-MCM6 antibody and HRP-conjugated goat anti-rabbit secondary antibody respectively. Image was developed using anti-FeQ™ ECL Substrate Kit .



Western blotting analysis using anti-MCM6 antibody . MCM6 expression in wild type (WT) and MCM6 shRNA knockdown (KD) HeLa cells with 30 µg of total cell lysates . Hsp90 α serves as a loading control. The blot was incubated with anti-MCM6 antibody and HRP-conjugated goat anti-rabbit secondary antibody respectively. Image was developed using anti-FeQ™ ECL Substrate Kit .



Flow cytometric analysis of MCM6 expression in C2C12 cells using anti-MCM6 antibody . Green, isotype control; red, MCM6.



Immunocytochemical staining of C2C12 cells with MCM6 antibody . Nuclei were stained blue with DAPI; MCM6 was stained magenta with Alexa Fluor® 647. Images were taken using anti-Leica stellaris 5. Protein abundance based on laser Intensity and smart gain: Medium. Scale bar: 20 μ m.