

## Product datasheet for **TA424956**

### MAP3K7 Rabbit Monoclonal Antibody [Clone ID: 23GB2395]

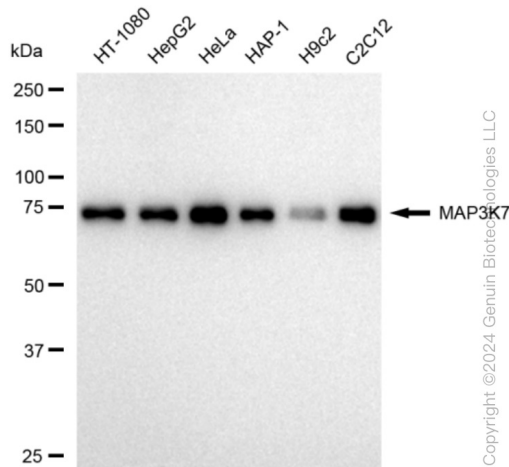
#### Product data:

Product Type:	Primary Antibodies
Clone Name:	23GB2395
Applications:	FC, ICC, WB
Recommended Dilution:	Western Blotting (WB): 1:1,000-1:5,000, Flow Cytometry (FCM): 1:2,000, Immunocytochemistry (IC): 1:100-1:1,000
Reactivity:	Human, Mouse, Rat
Host:	Rabbit
Isotype:	IgG
Clonality:	Monoclonal
Immunogen:	A synthesized peptide derived from human TAK1
Formulation:	Supplied in PBS (pH 7.4) containing 50% glycerol, and 0.02% sodium azide.
Concentration:	Lot dependent
Purification:	Affinity Purified
Conjugation:	Unconjugated
Stability:	Store at -20 °C for one year.
Database Link:	<a href="#">O43318</a>
Synonyms:	CSCF; EC 2.7.11; EC 2.7.11.25; FMD2; MAP3K7; MEKK7; Mitogen-Activated Protein Kinase Kinase Kinase 7; TAK1; TGF-Beta-Activated Kinase 1; TGF-Beta Activated Kinase 1; TGF1a; Transforming Growth Factor-Beta-Activated Kinase 1

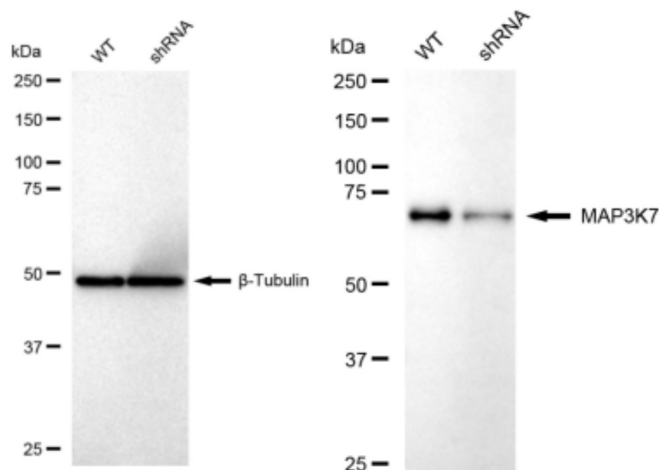


[View online »](#)

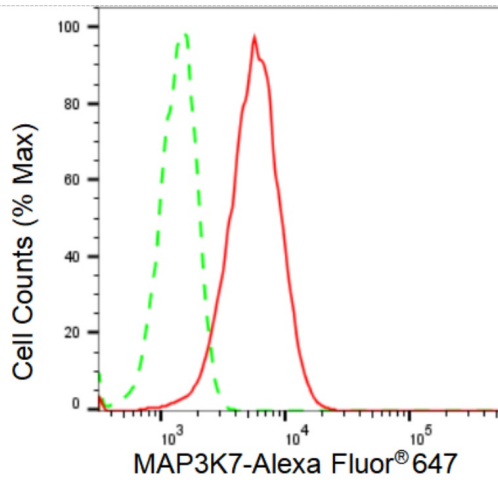
## Product images:



Western blotting analysis using anti-MAP3K7 antibody . Total cell lysates (30 µg) from various cell lines were loaded and separated by SDS-PAGE. The blot was incubated with anti-MAP3K7 antibody and HRP-conjugated goat anti-rabbit secondary antibody respectively. Image was developed using anti-FeQ™ ECL Substrate Kit .

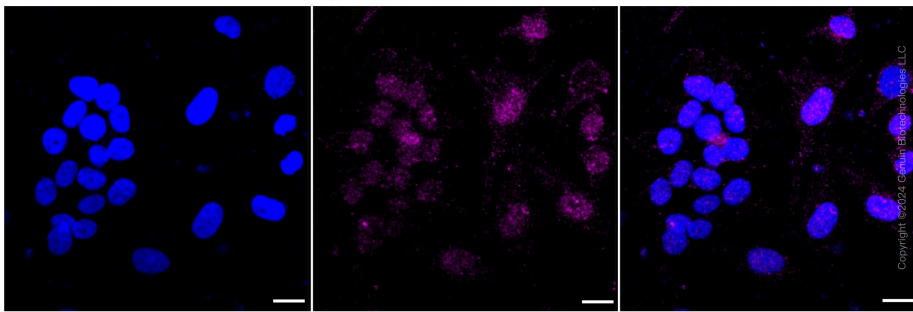


Western blotting analysis using anti-MAP3K7 antibody . MAP3K7 expression in wild type (WT) and MAP3K7 shRNA knockdown (KD) HeLa cells with 30 µg of total cell lysates . β-Tubulin serves as a loading control. The blot was incubated with anti-MAP3K7 antibody and HRP-conjugated goat anti-rabbit secondary antibody respectively. Image was developed using anti-FeQ™ ECL Substrate Kit .



Copyright ©2024 Genuin Biotechnologies LLC

Flow cytometric analysis of MAP3K7 expression in HeLa cells using anti-MAP3K7 antibody. Green, isotype control; red, MAP3K7.



Copyright ©2024 Genuin Biotechnologies LLC

Immunocytochemical staining of HeLa cells with MAP3K7 antibody. Nuclei were stained blue with DAPI; MAP3K7 was stained magenta with Alexa Fluor® 647. Images were taken using anti-Leica stellaris 5. Protein abundance based on laser Intensity and smart gain: Very low. Scale bar: 20 µm.