

## Product datasheet for **TA424951**

### MAP1LC3A Rabbit Monoclonal Antibody [Clone ID: 23GB1960]

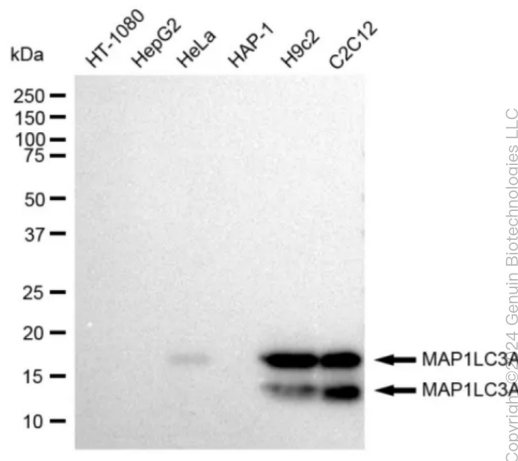
#### Product data:

Product Type:	Primary Antibodies
Clone Name:	23GB1960
Applications:	ICC, WB
Recommended Dilution:	Western Blotting (WB): 1:1,000-1:20,000, Immunocytochemistry (IC): 1:100-1:1,000
Reactivity:	Human, Mouse, Rat
Host:	Rabbit
Isotype:	IgG
Clonality:	Monoclonal
Immunogen:	A synthesized peptide derived from human MAP1LC3A
Formulation:	Supplied in PBS (pH 7.4) containing 50% glycerol, and 0.02% sodium azide.
Concentration:	Lot dependent
Purification:	Affinity Purified
Conjugation:	Unconjugated
Stability:	Store at -20 °C for one year.
Database Link:	<a href="#">Q9H492</a>
Synonyms:	ATG8E; Autophagy-Related Protein LC3 A; Autophagy-Related Ubiquitin-Like Modifier LC3 A; LC3; LC3A; MAP1 Light Chain 3-Like Protein 1; MAP1A/1B Light Chain 3 A; MAP1A/MAP1B LC3 A; MAP1A/MAP1B Light Chain 3 A; MAP1ALC3; MAP1BLC3; MAP1LC3A; Microtubule-Associated Protein 1 Light Chain 3 Alpha; Microtubule-Associated Proteins 1A/1B Light Chain 3; Microtubule-Associated Proteins 1A/1B Light Chain 3A; Microtubule Associated Protein 1 Light Chain 3 Alpha

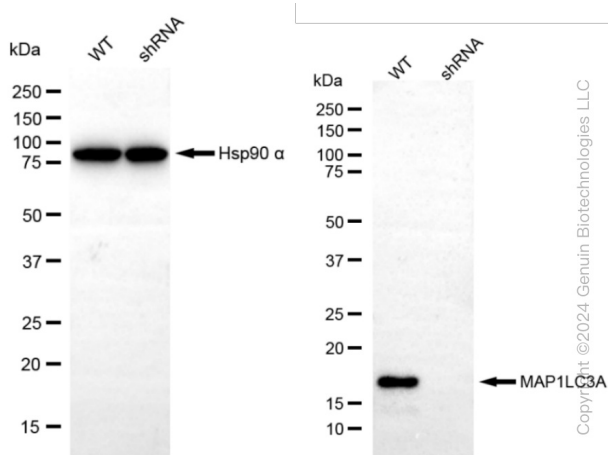


[View online »](#)

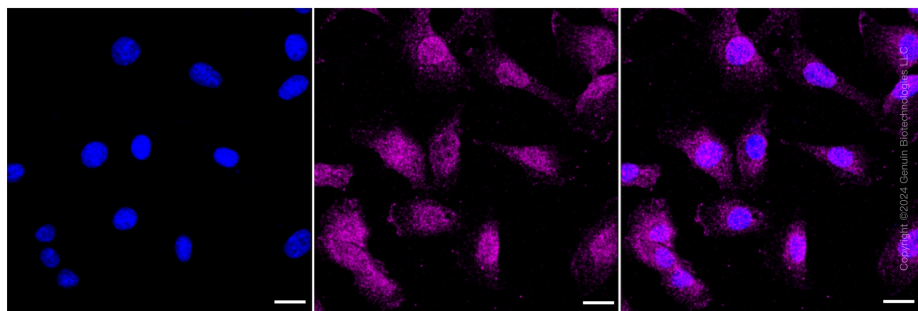
## Product images:



Western blotting analysis using anti-MAP1LC3A antibody . Total cell lysates (30 µg) from various cell lines were loaded and separated by SDS-PAGE. The blot was incubated with anti-MAP1LC3A antibody and HRP-conjugated goat anti-rabbit secondary antibody respectively. Image was developed using anti-FeQ™ ECL Substrate Kit .



Western blotting analysis using anti-MAP1LC3A antibody . MAP1LC3A expression in wild type (WT) and MAP1LC3A shRNA knockdown (KD) HeLa cells with 30 µg of total cell lysates . Hsp90 α serves as a loading control. The blot was incubated with anti-MAP1LC3A antibody and HRP-conjugated goat anti-rabbit secondary antibody respectively. Image was developed using anti-FeQ™ ECL Substrate Kit .



Immunocytochemical staining of C2C12 cells with MAP1LC3A antibody . Nuclei were stained blue with DAPI; MAP1LC3A was stained magenta with Alexa Fluor® 647. Images were taken using anti-Leica stellaris 5. Protein abundance based on laser Intensity and smart gain: Medium. Scale bar: 20  $\mu$ m.