

Product datasheet for **TA424949**

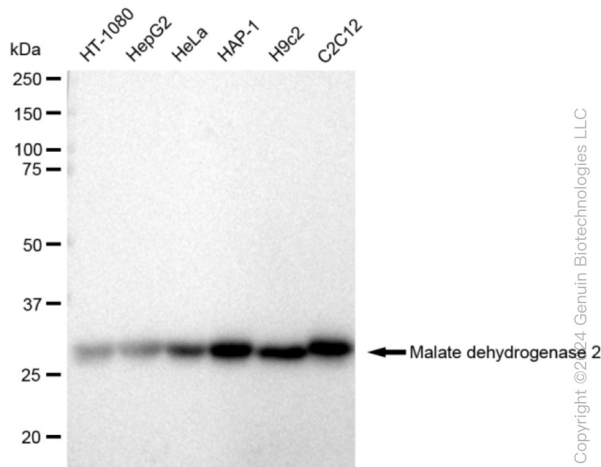
MDH2 Rabbit Monoclonal Antibody [Clone ID: 23GB2325]

Product data:

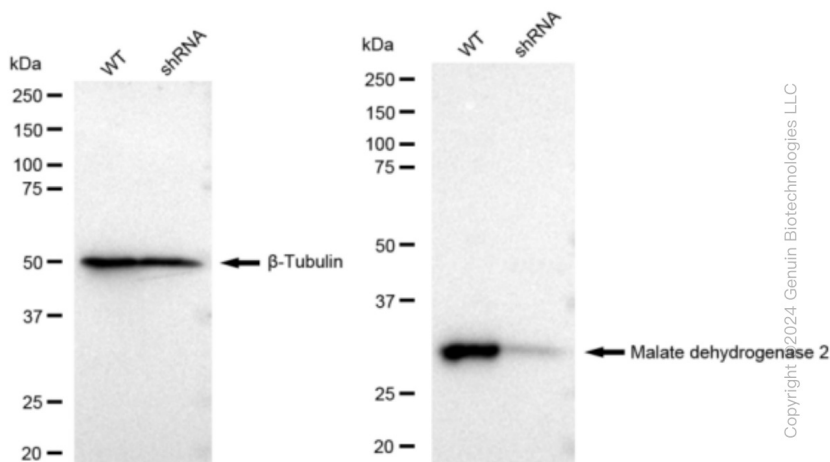
Product Type:	Primary Antibodies
Clone Name:	23GB2325
Applications:	FC, ICC, WB
Recommended Dilution:	Western Blotting (WB): 1:1,000-1:5,000, Flow Cytometry (FCM): 1:2,000, Immunocytochemistry (IC): 1:100-1:1,000
Reactivity:	Human, Mouse, Rat
Host:	Rabbit
Isotype:	IgG
Clonality:	Monoclonal
Immunogen:	A synthesized peptide derived from human MDH2
Formulation:	Supplied in PBS (pH 7.4) containing 50% glycerol, and 0.02% sodium azide.
Concentration:	Lot dependent
Purification:	Affinity Purified
Conjugation:	Unconjugated
Stability:	Store at -20 °C for one year.
Database Link:	P40926
Synonyms:	DEE51; EC 1.1.1; EC 1.1.1.37; EIEE51; M-MDH; Malate Dehydrogenase, Mitochondrial; Malate Dehydrogenase 2; Malate Dehydrogenase 2, NAD (Mitochondrial); MDH; MDH2; MGC:3559; MOR1; Testicular Tissue Protein Li 120

[View online »](#)

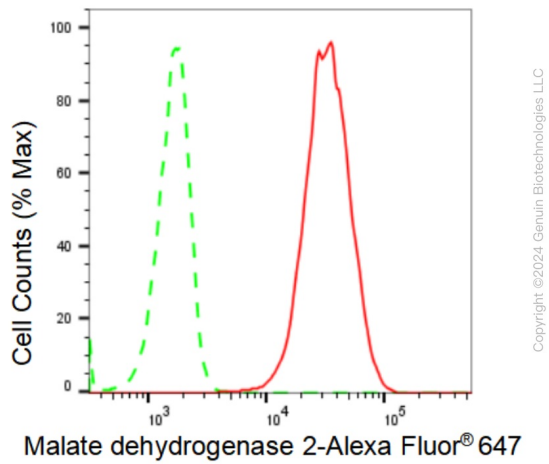
Product images:



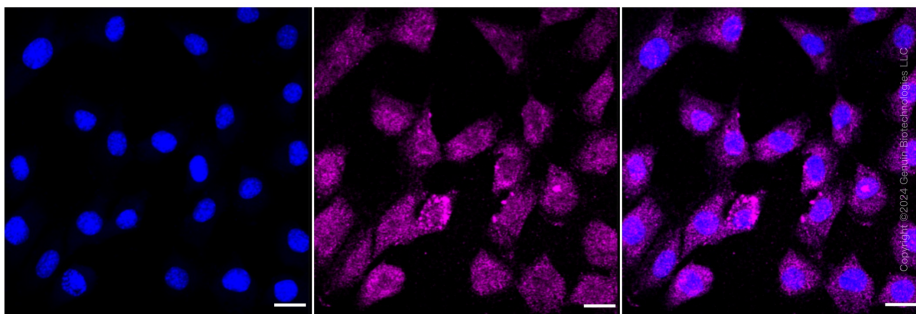
Western blotting analysis using anti-Malate dehydrogenase 2 antibody . Total cell lysates (30 µg) from various cell lines were loaded and separated by SDS-PAGE. The blot was incubated with anti-Malate dehydrogenase 2 antibody and HRP-conjugated goat anti-rabbit secondary antibody respectively. Image was developed using anti-FeQ™ ECL Substrate Kit .



Western blotting analysis using anti-Malate dehydrogenase 2 antibody . Malate dehydrogenase 2 expression in wild type (WT) and malate dehydrogenase 2 shRNA knockdown (KD) HeLa cells with 30 µg of total cell lysates . β-Tubulin serves as a loading control. The blot was incubated with anti-Malate dehydrogenase 2 antibody and HRP-conjugated goat anti-rabbit secondary antibody respectively. Image was developed using anti-FeQ™ ECL Substrate Kit .



Flow cytometric analysis of Malate dehydrogenase 2 expression in C2C12 cells using anti-Malate dehydrogenase 2 antibody . Green, isotype control; red, Malate dehydrogenase 2.



Immunocytochemical staining of C2C12 cells with Malate dehydrogenase 2 antibody . Nuclei were stained blue with DAPI; Malate dehydrogenase 2 was stained magenta with Alexa Fluor® 647. Images were taken using anti-Leica stellaris 5. Protein abundance based on laser Intensity and smart gain: Low. Scale bar: 20 μ m.