

Product datasheet for **TA424935**

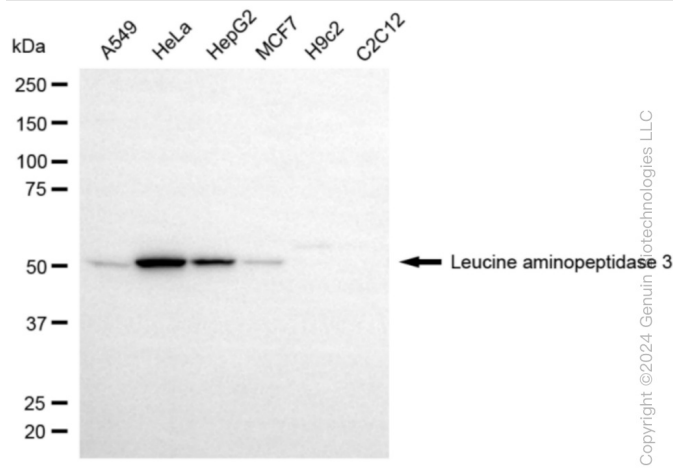
LAP3 Rabbit Monoclonal Antibody [Clone ID: 24GB5965]

Product data:

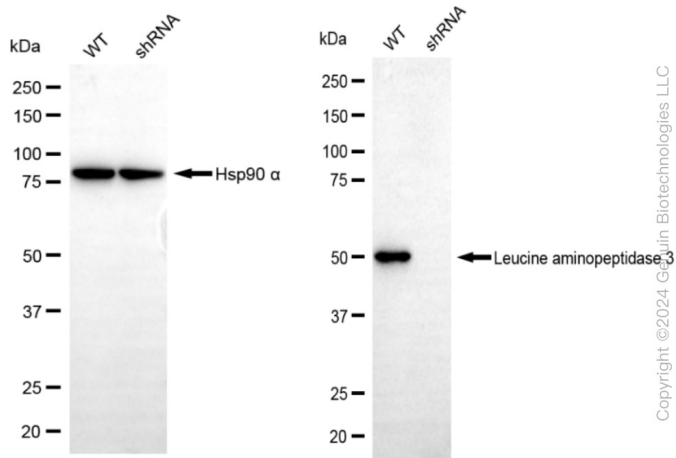
Product Type:	Primary Antibodies
Clone Name:	24GB5965
Applications:	FC, ICC, WB
Recommended Dilution:	Western Blotting (WB): 1:1,000-1:5,000, Flow Cytometry (FCM): 1:2,000, Immunocytochemistry (IC): 1:100-1:1,000
Reactivity:	Human, Rat
Host:	Rabbit
Isotype:	IgG
Clonality:	Monoclonal
Immunogen:	A synthesized peptide derived from human LAP3
Formulation:	Supplied in PBS (pH 7.4) containing 50% glycerol, and 0.02% sodium azide.
Concentration:	Lot dependent
Purification:	Affinity Purified
Conjugation:	Unconjugated
Stability:	Store at -20 °C for one year.
Database Link:	P28838
Synonyms:	Cysteinylglycine-S-Conjugate Dipeptidase; Cytosol Aminopeptidase; EC 3.4.11.1; EC 3.4.11.5; EC 3.4.13.23; Epididymis Secretory Protein Li 106; HEL-S-106; LAP; LAP-3; LAP3; LAPEP; Leucine Aminopeptidase 3; Leucyl Aminopeptidase; PEPS; Peptidase S; Proline Aminopeptidase; Prolyl Aminopeptidase; EC 3.4.11

[View online »](#)

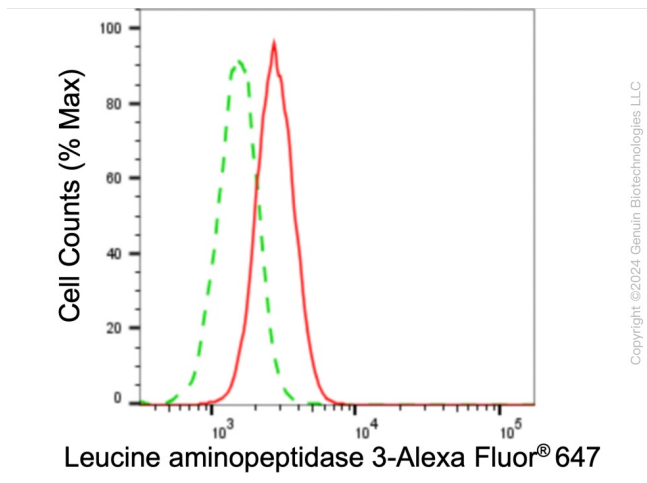
Product images:



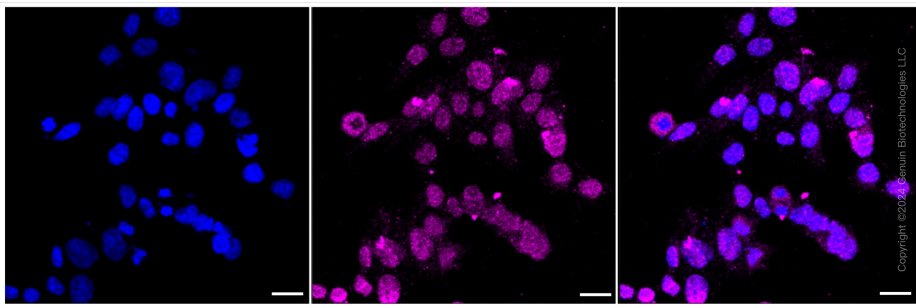
Western blotting analysis using anti-leucine aminopeptidase 3 antibody . Total cell lysates (30 µg) from various cell lines were loaded and separated by SDS-PAGE. The blot was incubated with anti-leucine aminopeptidase 3 antibody and HRP-conjugated goat anti-rabbit secondary antibody respectively. Image was developed using anti-NaQ™ ECL Substrate Kit .



Western blotting analysis using anti-leucine aminopeptidase 3 antibody . Leucine aminopeptidase 3 expression in wild type (WT) and leucine aminopeptidase 3 (LAP3) shRNA knockdown (KD) HeLa cells with 20 µg of total cell lysates. Hsp90 α serves as a loading control. The blot was incubated with anti-leucine aminopeptidase 3 antibody and HRP-conjugated goat anti-rabbit secondary antibody respectively. Image was developed using anti-NaQ™ ECL Substrate Kit .



Flow cytometric analysis of leucine aminopeptidase 3 expression in HAP-1 cells using anti-Leucine aminopeptidase 3 antibody . Green, isotype control; red, leucine aminopeptidase 3.



Immunocytochemical staining of HAP-1 cells with anti-leucine aminopeptidase 3 antibody . Nuclei were stained blue with DAPI; Leucine aminopeptidase 3 was stained magenta with Alexa Fluor® 647. Images were taken using anti-Leica stellaris 5. Protein abundance based on laser Intensity and smart gain: Medium. Scale bar, 20 µm.