

## Product datasheet for **TA424921**

### **KIF5B Rabbit Monoclonal Antibody [Clone ID: 23GB4030]**

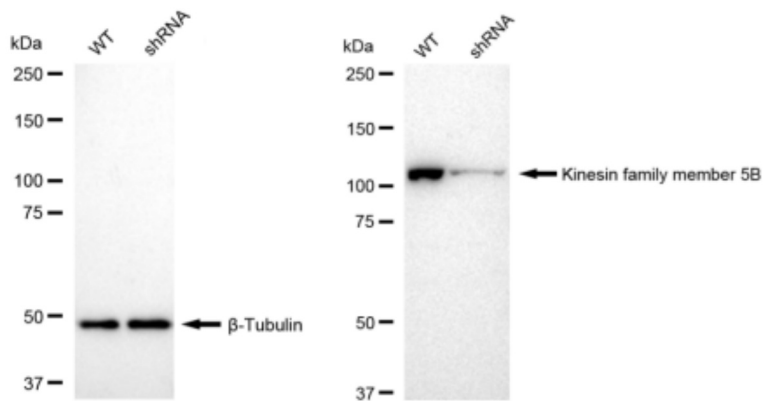
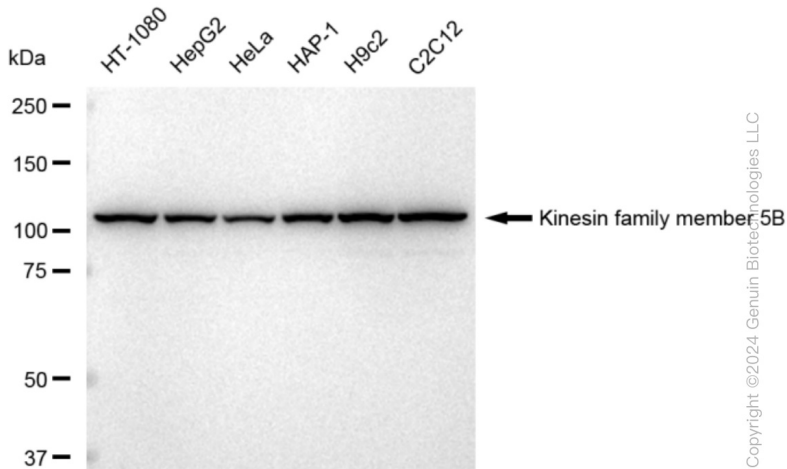
#### **Product data:**

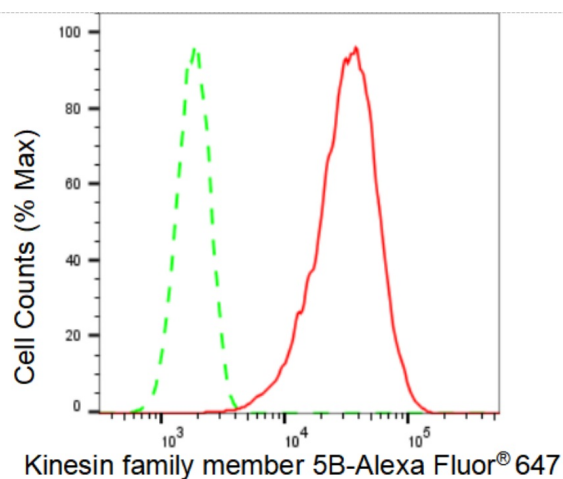
Product Type:	Primary Antibodies
Clone Name:	23GB4030
Applications:	FC, ICC, WB
Recommended Dilution:	Western Blotting (WB): 1:1,000-1:5,000, Flow Cytometry (FCM): 1:2,000, Immunocytochemistry (IC): 1:100-1:1,000
Reactivity:	Human, Mouse, Rat
Host:	Rabbit
Isotype:	IgG
Clonality:	Monoclonal
Immunogen:	A synthesized peptide derived from human KIF5B
Formulation:	Supplied in PBS (pH 7.4) containing 50% glycerol, and 0.02% sodium azide.
Concentration:	Lot dependent
Purification:	Affinity Purified
Conjugation:	Unconjugated
Stability:	Store at -20 °C for one year.
Database Link:	<a href="#">P33176</a>
Synonyms:	Conventional Kinesin Heavy Chain; Epididymis Secretory Protein Li 61; HEL-S-61; KIF5B; Kinesin-1 Heavy Chain; Kinesin 1 (110-120kD); Kinesin Family Member 5B; Kinesin Heavy Chain; KINH; KNS; KNS1; Ubiquitous Kinesin Heavy Chain; UKHC



[View online »](#)

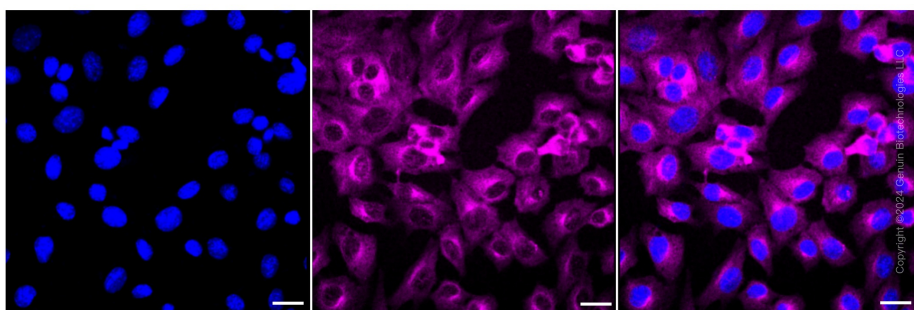
## Product images:





Copyright ©2024 Genuin Biotechnologies LLC

Flow cytometric analysis of Kinesin family member 5B expression in C2C12 cells using anti-Kinesin family member 5B antibody. Green, isotype control; red, Kinesin family member 5B.



Copyright ©2024 Genuin Biotechnologies LLC

Immunocytochemical staining of C2C12 cells with Kinesin family member 5B antibody. Nuclei were stained blue with DAPI; Kinesin family member 5B was stained magenta with Alexa Fluor® 647. Images were taken using anti-Leica stellaris 5. Protein abundance based on laser Intensity and smart gain: Medium. Scale bar: 20  $\mu$ m.