

## Product datasheet for **TA424916**

### **KHSRP Rabbit Monoclonal Antibody [Clone ID: 23GB6435]**

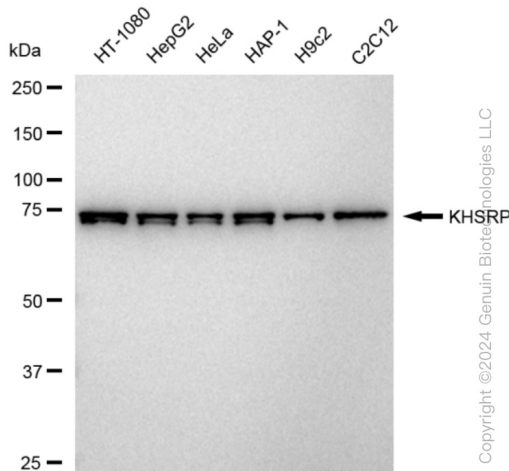
#### **Product data:**

Product Type:	Primary Antibodies
Clone Name:	23GB6435
Applications:	FC, WB
Recommended Dilution:	Western Blotting (WB): 1:1,000-1:5,000, Flow Cytometry (FCM): 1:2,000, Immunocytochemistry (IC): 1:100-1:1,000
Reactivity:	Human, Mouse, Rat
Host:	Rabbit
Isotype:	IgG
Clonality:	Monoclonal
Immunogen:	A synthesized peptide derived from human KHSRP
Formulation:	Supplied in PBS (pH 7.4) containing 50% glycerol, and 0.02% sodium azide.
Concentration:	Lot dependent
Purification:	Affinity Purified
Conjugation:	Unconjugated
Stability:	Store at -20 °C for one year.
Database Link:	<a href="#">Q92945</a>
Synonyms:	Epididymis Secretory Sperm Binding Protein; Far Upstream Element-Binding Protein; FBP2; FUBP2; FUSE-Binding Protein; FUSE Binding Protein 2; KH-Type Splicing Regulatory Protein; KHSRP; KH Type-Splicing Regulatory Protein; KSRP; P75

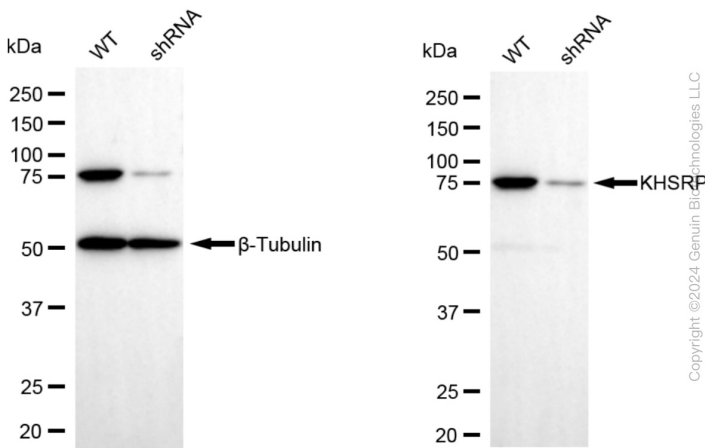


[View online »](#)

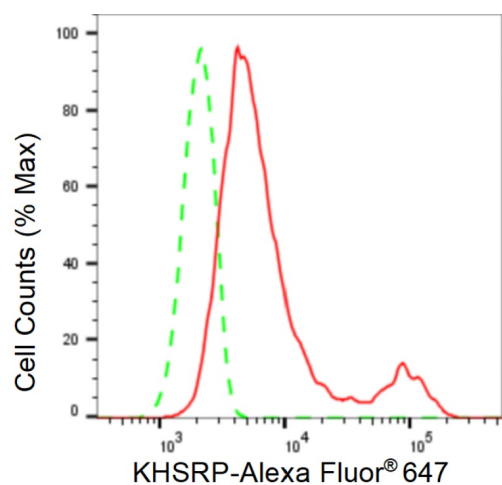
## Product images:



Western blotting analysis using anti-KHSRP antibody . Total cell lysates (30 µg) from various cell lines were loaded and separated by SDS-PAGE. The blot was incubated with anti-KHSRP antibody and HRP-conjugated goat anti-rabbit secondary antibody respectively. Image was developed using anti-FeQ™ ECL Substrate Kit .



Western blotting analysis using anti-KHSRP antibody . KHSRP expression in wild type (WT) and KHSRP shRNA knockdown (KD) HeLa cells with 30 µg of total cell lysates. β-Tubulin serves as a loading control. The blot was incubated with anti-KHSRP antibody and HRP-conjugated goat anti-rabbit secondary antibody respectively. Image was developed using anti-FeQ™ ECL Substrate Kit .



Copyright ©2024 Genuin Biotechnologies LLC

Flow cytometric analysis of KHSRP expression in HepG2 cells using anti-KHSRP antibody . Green, isotype control; red, KHSRP.