

Product datasheet for **TA424890**

ITGA5 Rabbit Monoclonal Antibody [Clone ID: 23GB880]

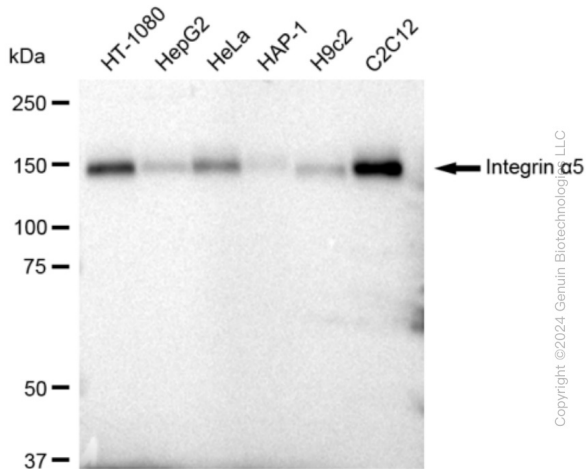
Product data:

Product Type:	Primary Antibodies
Clone Name:	23GB880
Applications:	FC, ICC, WB
Recommended Dilution:	Western Blotting (WB): 1:1,000-1:5,000, Flow Cytometry (FCM): 1:2,000, Immunocytochemistry (IC): 1:100-1:1,000
Reactivity:	Human, Mouse, Rat
Host:	Rabbit
Isotype:	IgG
Clonality:	Monoclonal
Immunogen:	A synthesized peptide derived from human integrin alpha 5
Formulation:	Supplied in PBS (pH 7.4) containing 50% glycerol, and 0.02% sodium azide.
Concentration:	Lot dependent
Purification:	Affinity Purified
Conjugation:	Unconjugated
Stability:	Store at -20 °C for one year.
Database Link:	P08648
Synonyms:	CD49 Antigen-Like Family Member E; CD49e; CD49e Antigen; Fibronectin Receptor, Alpha Polypeptide; Fibronectin Receptor, Alpha Subunit; Fibronectin Receptor Subunit Alpha; FNRA; Integrin, Alpha 5 (Fibronectin Receptor, Alpha Polypeptide); Integrin Alpha-5; Integrin Alpha-F; ITGA5/SLC9B1 Fusion; Very Late Activation Protein 5, Alpha Subunit; VLA-5; VLA5A

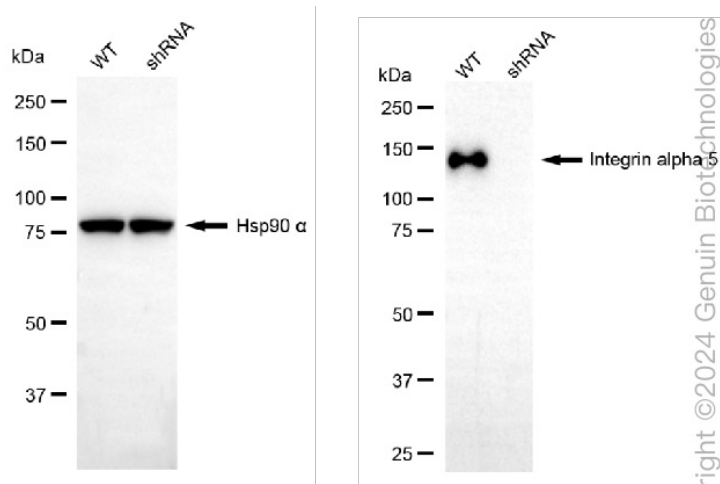


[View online »](#)

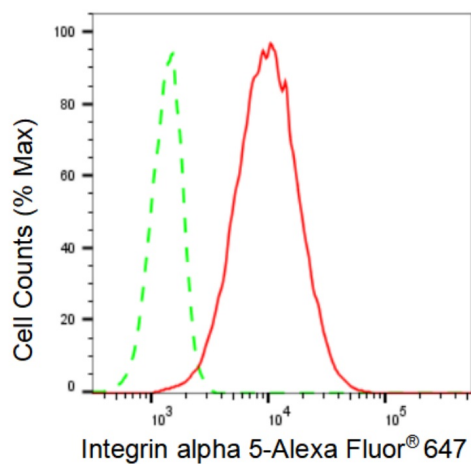
Product images:



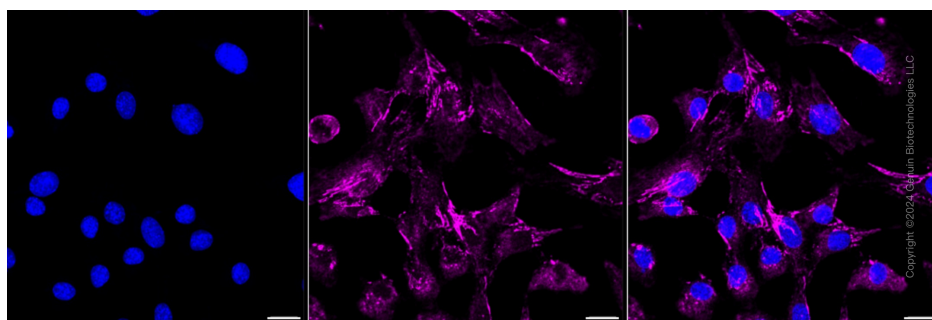
Western blotting analysis using anti-Integrin α5 antibody . Total cell lysates (30 μg) from various cell lines were loaded and separated by SDS-PAGE. The blot was incubated with anti-Integrin α5 antibody and HRP-conjugated goat anti rabbit secondary antibody respectively. Image was developed using anti-FeQ™ ECL Substrate Kit .



Western blotting analysis using anti-Integrin alpha 5 antibody . Integrin alpha 5 expression in wild type (WT) and Integrin alpha 5 shRNA knockdown (KD) HeLa cells with 30 μg of total cell lysates . Hsp90 α serves as a loading control. The blot was incubated with anti-Integrin alpha 5 antibody and HRP-conjugated goat anti rabbit secondary antibody respectively. Image was developed using anti-FeQ™ ECL Substrate Kit .



Flow cytometric analysis of Integrin alpha 5 expression in C2C12 cells using anti-Integrin alpha 5 antibody . Green, isotype control; red, Integrin alpha 5.



Immunocytochemical staining of C2C12 cells with Integrin alpha 5 antibody . Nuclei were stained blue with DAPI; Integrin alpha 5 was stained magenta with Alexa Fluor® 647. Images were taken using anti-Leica stellaris 5. Protein abundance based on laser Intensity and smart gain: Medium. Scale bar: 20 μ m.