

Product datasheet for **TA424879**

IGF2BP3 Rabbit Monoclonal Antibody [Clone ID: 23GB6345]

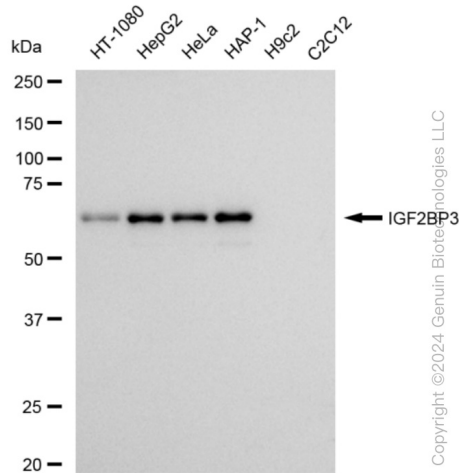
Product data:

| | |
|-----------------------|--|
| Product Type: | Primary Antibodies |
| Clone Name: | 23GB6345 |
| Applications: | FC, ICC, WB |
| Recommended Dilution: | Western Blotting (WB): 1:1,000-1:5,000, Flow Cytometry (FCM): 1:2,000, Immunocytochemistry (IC): 1:100-1:1,000 |
| Reactivity: | Human |
| Host: | Rabbit |
| Isotype: | IgG |
| Clonality: | Monoclonal |
| Immunogen: | A synthesized peptide derived from human IMP3 |
| Formulation: | Supplied in PBS (pH 7.4) containing 50% glycerol, and 0.02% sodium azide. |
| Concentration: | Lot dependent |
| Purification: | Affinity Purified |
| Conjugation: | Unconjugated |
| Stability: | Store at -20 °C for one year. |
| Database Link: | Q00425 |
| Synonyms: | Cancer/Testis Antigen 98; CT98; HKOC; IGF-II mRNA-Binding Protein 3; IGF2 mRNA-Binding Protein 3; IGF2BP3; IGF II mRNA Binding Protein 3; IMP-3; IMP3; Insulin-Like Growth Factor 2 mRNA-Binding Protein 3; Insulin-Like Growth Factor 2 mRNA Binding Protein 3; Insulin Like Growth Factor 2 mRNA Binding Protein 3; KH Domain-Containing Protein Overexpressed In Cancer; KH Domain Containing Protein Overexpressed In Cancer; KOC; KOC1; VICKZ3; VICKZ Family Member 3 |

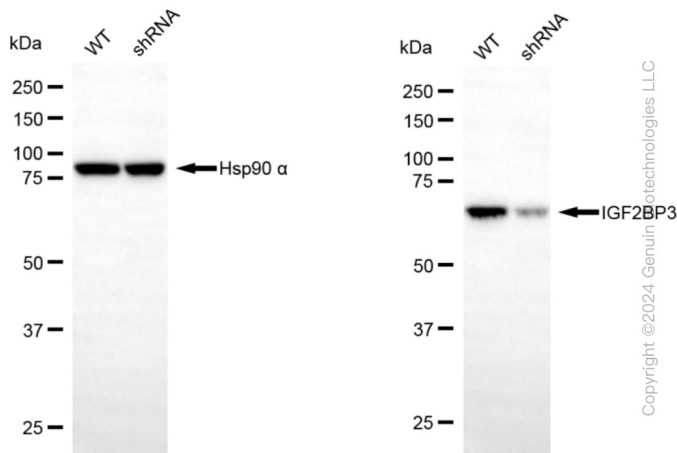


[View online »](#)

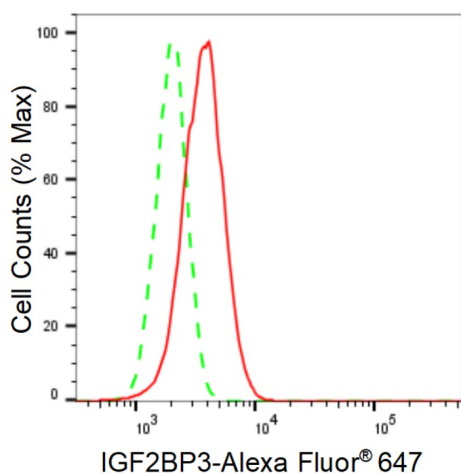
Product images:



Western blotting analysis using anti-IGF2BP3 antibody . Total cell lysates (30 µg) from various cell lines were loaded and separated by SDS-PAGE. The blot was incubated with anti-IGF2BP3 antibody and HRP-conjugated goat anti-rabbit secondary antibody respectively. Image was developed using anti-FeQ™ ECL Substrate Kit .

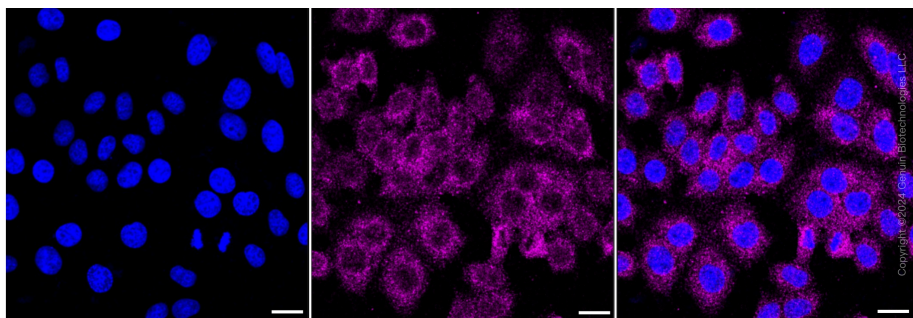


Western blotting analysis using anti-IGF2BP3 antibody . IGF2BP3 expression in wild type (WT) and IGF2BP3 shRNA knockdown (KD) HeLa cells with 20 µg of total cell lysates. Hsp90 α serves as a loading control. The blot was incubated with anti-IGF2BP3 antibody and HRP-conjugated goat anti-rabbit secondary antibody respectively. Image was developed using anti-NaQ™ ECL Substrate Kit .



Copyright ©2024 Genuin Biotechnologies LLC

Flow cytometric analysis of IGF2BP3 expression in HepG2 cells using anti-IGF2BP3 antibody . Green, isotype control; red, IGF2BP3.



Copyright ©2024 Genuin Biotechnologies LLC

Immunocytochemical staining of HepG2 cells with anti-IGF2BP3 antibody . Nuclei were stained blue with DAPI; IGF2BP3 was stained magenta with Alexa Fluor® 647. Images were taken using anti-Leica stellaris 5. Protein abundance based on laser Intensity and smart gain: Medium. Scale bar: 20 μ m.