

## Product datasheet for **TA424853**

### **HAT1 Rabbit Monoclonal Antibody [Clone ID: 23GB2090]**

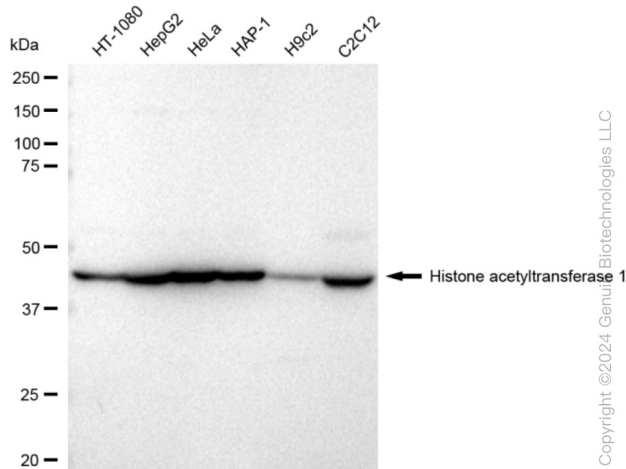
#### **Product data:**

Product Type:	Primary Antibodies
Clone Name:	23GB2090
Applications:	FC, ICC, WB
Recommended Dilution:	Western Blotting (WB): 1:1,000-1:5,000, Flow Cytometry (FCM): 1:2,000, Immunocytochemistry (IC): 1:100-1:1,000
Reactivity:	Human, Mouse, Rat
Host:	Rabbit
Isotype:	IgG
Clonality:	Monoclonal
Immunogen:	A synthesized peptide derived from human KAT1 / HAT1
Formulation:	Supplied in PBS (pH 7.4) containing 50% glycerol, and 0.02% sodium azide.
Concentration:	Lot dependent
Purification:	Affinity Purified
Conjugation:	Unconjugated
Stability:	Store at -20 °C for one year.
Database Link:	<a href="#">Q14929</a>
Synonyms:	EC 2.3.1.48; HAT1; Histone Acetyltransferase 1; Histone Acetyltransferase Type B Catalytic Subunit; KAT1

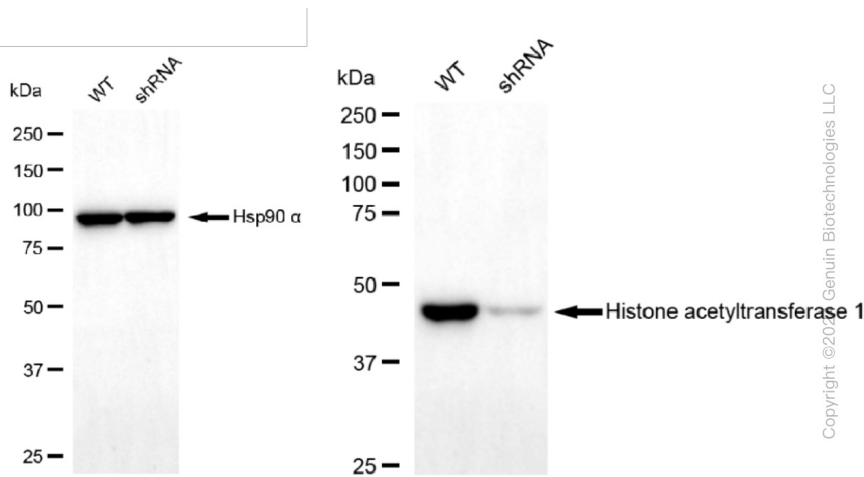


[View online »](#)

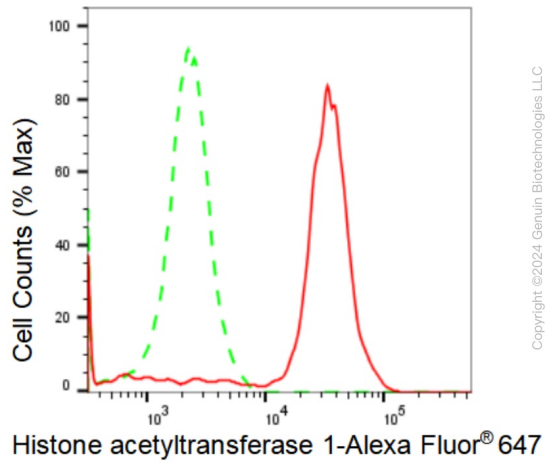
## Product images:



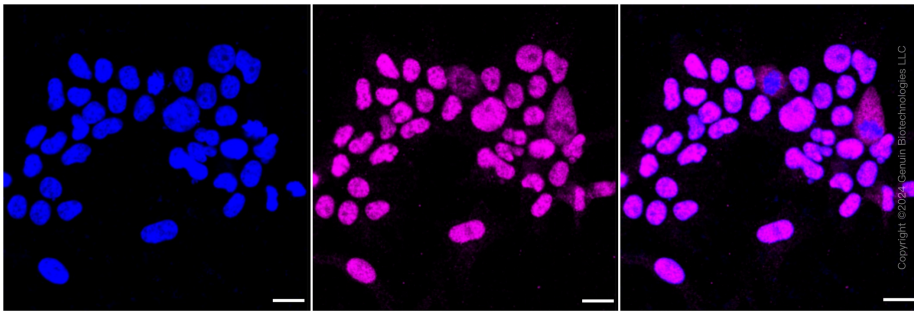
Western blotting analysis using anti-Histone acetyltransferase 1 antibody . Total cell lysates (30 µg) from various cell lines were loaded and separated by SDS-PAGE. The blot was incubated with anti-Histone acetyltransferase 1 antibody and HRP-conjugated goat anti-rabbit secondary antibody respectively. Image was developed using anti-FeQ™ ECL Substrate Kit .



Western blotting analysis using anti-Histone acetyltransferase 1 antibody . Histone acetyltransferase 1 expression in wild type (WT) and histone acetyltransferase 1 shRNA knockdown (KD) HeLa cells with 30 µg of total cell lysates . β-Tubulin serves as a loading control. The blot was incubated with anti-Histone acetyltransferase 1 antibody and HRP-conjugated goat anti-rabbit secondary antibody respectively. Image was developed using anti-FeQ™ ECL Substrate Kit .



Flow cytometric analysis of Histone acetyltransferase 1 expression in HeLa cells using anti-Histone acetyltransferase 1 antibody . Green, isotype control; red, Histone acetyltransferase 1.



Immunocytochemical staining of HeLa cells with Histone acetyltransferase 1 antibody . Nuclei were stained blue with DAPI; Histone acetyltransferase 1 was stained magenta with Alexa Fluor® 647. Images were taken using anti-Leica stellaris 5. Protein abundance based on laser Intensity and smart gain: Medium. Scale bar: 20  $\mu$ m.