

Product datasheet for **TA424851**

HIF1AN Rabbit Monoclonal Antibody [Clone ID: 23GB6385]

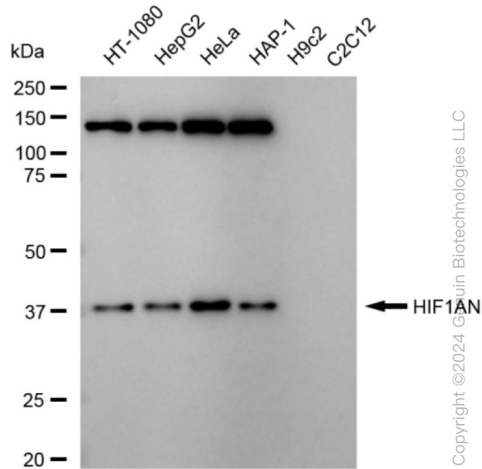
Product data:

Product Type:	Primary Antibodies
Clone Name:	23GB6385
Applications:	FC, ICC, WB
Recommended Dilution:	Western Blotting (WB): 1:1,000-1:5,000, Flow Cytometry (FCM): 1:2,000, Immunocytochemistry (IC): 1:100-1:1,000
Reactivity:	Human
Host:	Rabbit
Isotype:	IgG
Clonality:	Monoclonal
Immunogen:	A synthesized peptide derived from human HIF1AN
Formulation:	Supplied in PBS (pH 7.4) containing 50% glycerol, and 0.02% sodium azide.
Concentration:	Lot dependent
Purification:	Affinity Purified
Conjugation:	Unconjugated
Stability:	Store at -20 °C for one year.
Database Link:	Q9NWT6
Synonyms:	DKFZP762F1811; DKFZp762F1811; EC 1.14.11.30; EC 1.14.11.N4; Factor Inhibiting HIF-1; Factor Inhibiting HIF1; FIH-1; FIH1; FLJ20615; FLJ22027; HIF1AN; Hypoxia-Inducible Factor 1-Alpha Inhibitor; Hypoxia-Inducible Factor Asparagine Hydroxylase; Hypoxia Inducible Factor 1 Alpha Subunit Inhibitor; Hypoxia Inducible Factor 1 Subunit Alpha Inhibitor; Peptide-Aspartate Beta-Dioxygenase

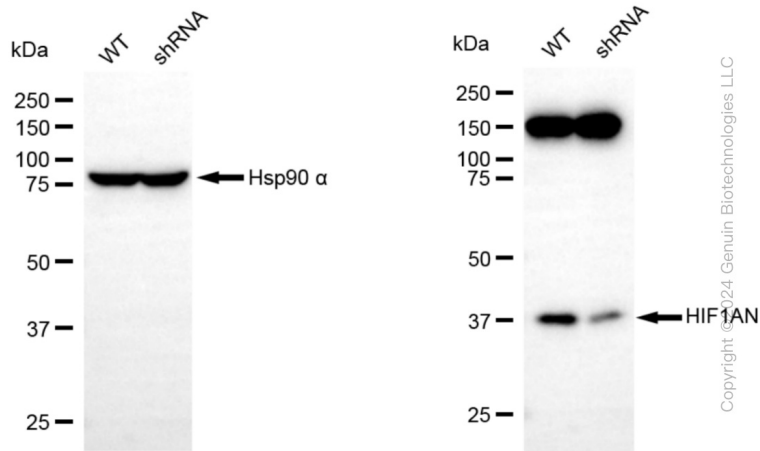


[View online »](#)

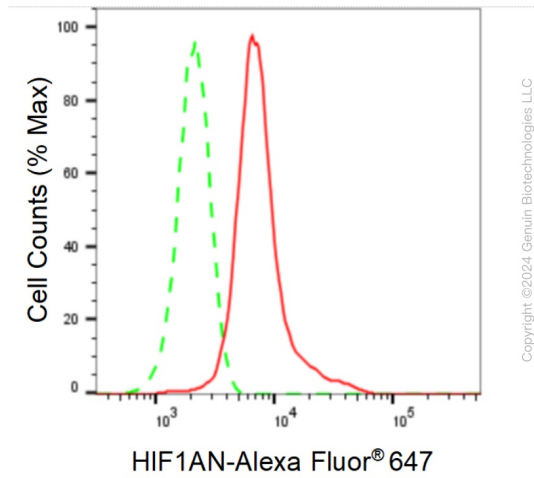
Product images:



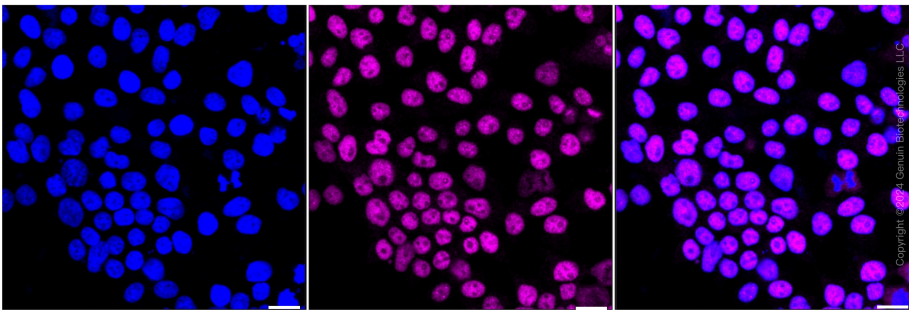
Western blotting analysis using anti-HIF1AN antibody . Total cell lysates (30 µg) from various cell lines were loaded and separated by SDS-PAGE. The blot was incubated with anti-HIF1AN antibody and HRP-conjugated goat anti-rabbit secondary antibody respectively. Image was developed using anti-FeQ™ ECL Substrate Kit .



Western blotting analysis using anti-HIF1AN antibody . HIF1AN expression in wild type (WT) and HIF1AN shRNA knockdown (KD) HeLa cells with 20 µg of total cell lysates. Hsp90 α serves as a loading control. The blot was incubated with anti-HIF1AN antibody and HRP-conjugated goat anti-rabbit secondary antibody respectively. Image was developed using anti-NaQ™ ECL Substrate Kit .



Flow cytometric analysis of HIF1AN expression in HeLa cells using anti-HIF1AN antibody . GrHIF1ANotype control; red, HIF1AN.



Immunocytochemical staining of HeLa cells with anti-HIF1AN antibody . Nuclei were stained blue with DAPI; HIF1AN was stained magenta with Alexa Fluor® 647. Images were taken using anti-Leica stellaris 5. Protein abundance based on laser Intensity and smart gain: High. Scale bar: 20 μ m.