

Product datasheet for **TA424830**

GRSF1 Rabbit Monoclonal Antibody [Clone ID: 23GB1660]

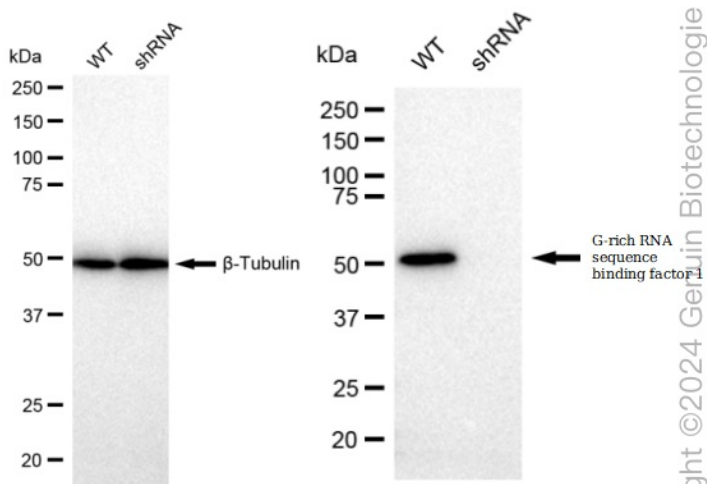
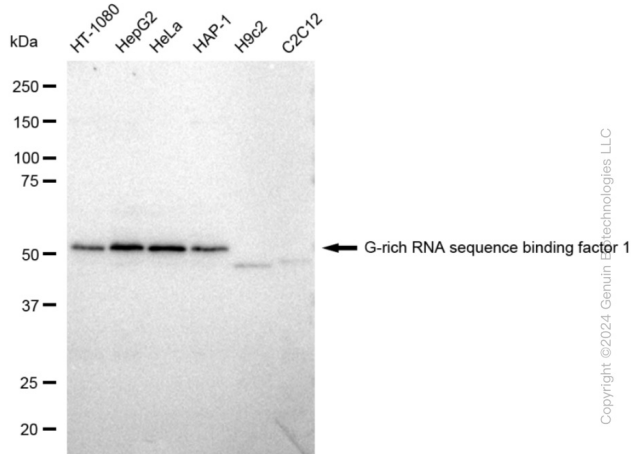
Product data:

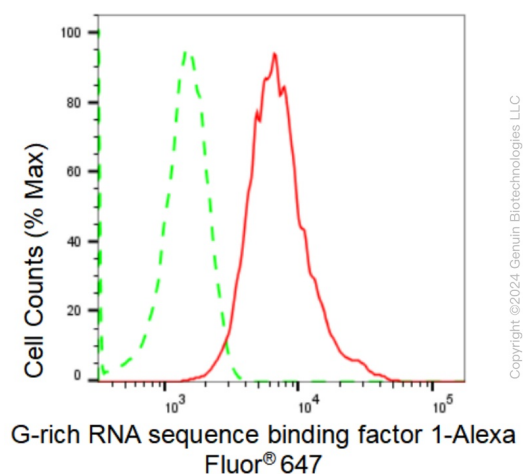
Product Type:	Primary Antibodies
Clone Name:	23GB1660
Applications:	FC, ICC, WB
Recommended Dilution:	Western Blotting (WB): 1:1,000-1:5,000, Flow Cytometry (FCM): 1:2,000, Immunocytochemistry (IC): 1:100-1:1,000
Reactivity:	Human
Host:	Rabbit
Isotype:	IgG
Clonality:	Monoclonal
Immunogen:	A synthesized peptide derived from human GRSF1
Formulation:	Supplied in PBS (pH 7.4) containing 50% glycerol, and 0.02% sodium azide.
Concentration:	Lot dependent
Purification:	Affinity Purified
Conjugation:	Unconjugated
Stability:	Store at -20 °C for one year.
Database Link:	Q12849
Synonyms:	G-Rich RNA Sequence Binding Factor 1; G-Rich Sequence Factor 1; GRSF-1; GRSF1



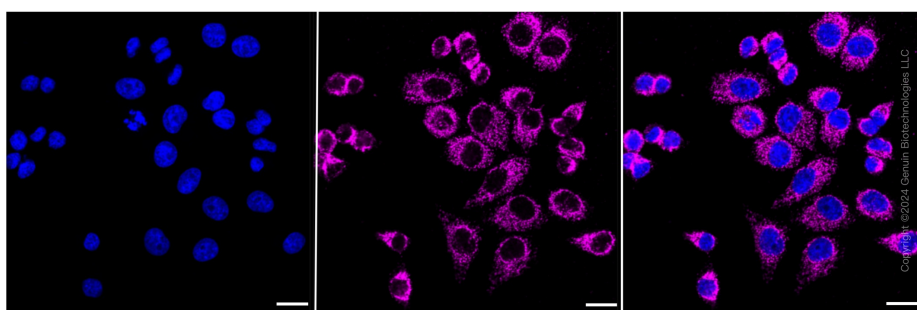
[View online »](#)

Product images:





Flow cytometric analysis of G-rich RNA sequence binding factor 1 expression in HepG2 cells using anti-G-rich RNA sequence binding factor 1 antibody . Green, isotype control; red, G-rich RNA sequence binding factor 1.



Immunocytochemical staining of HepG2 cells with G-rich RNA sequence binding factor 1 antibody . Nuclei were stained blue with DAPI; G-rich RNA sequence binding factor 1 was stained magenta with Alexa Fluor® 647. Images were taken using anti-Leica stellaris 5. Protein abundance based on laser Intensity and smart gain: High. Scale bar: 20 μ m.