

Product datasheet for **TA424797**

LGALS1 Rabbit Monoclonal Antibody [Clone ID: 23GB6280]

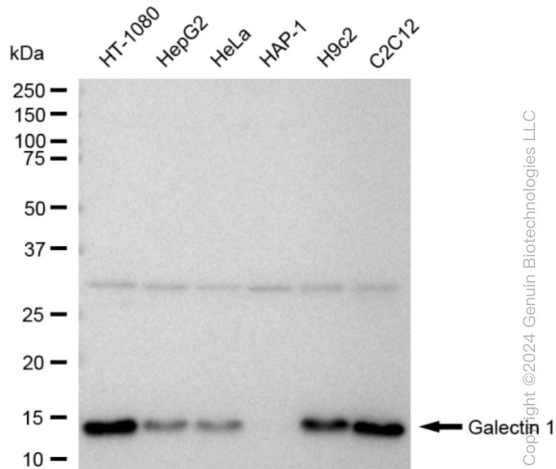
Product data:

Product Type:	Primary Antibodies
Clone Name:	23GB6280
Applications:	FC, WB
Recommended Dilution:	Western Blotting (WB): 1:1,000-1:5,000, Flow Cytometry (FCM): 1:2,000
Reactivity:	Human, Mouse, Rat
Host:	Rabbit
Isotype:	IgG
Clonality:	Monoclonal
Immunogen:	A synthesized peptide derived from human Galectin 1
Formulation:	Supplied in PBS (pH 7.4) containing 50% glycerol, and 0.02% sodium azide.
Concentration:	Lot dependent
Purification:	Affinity Purified
Conjugation:	Unconjugated
Stability:	Store at -20 °C for one year.
Database Link:	P09382
Synonyms:	14 KDa Laminin-Binding Protein; 14 KDa Lectin; Beta-Galactoside-Binding Lectin L-14-I; Beta-Galactoside-Binding Protein 14kDa; Epididymis Secretory Sperm Binding Protein; Gal-1; GAL1; Galaptin; Galectin-1; Galectin 1; GBP; HBL; HLBP14; HPL; Lactose-Binding Lectin 1; Lectin, Galactoside-Binding, Soluble, 1; Lectin Galactoside-Binding Soluble 1; LGALS1; Putative MAPK-Activating Protein PM12; S-Lac Lectin 1

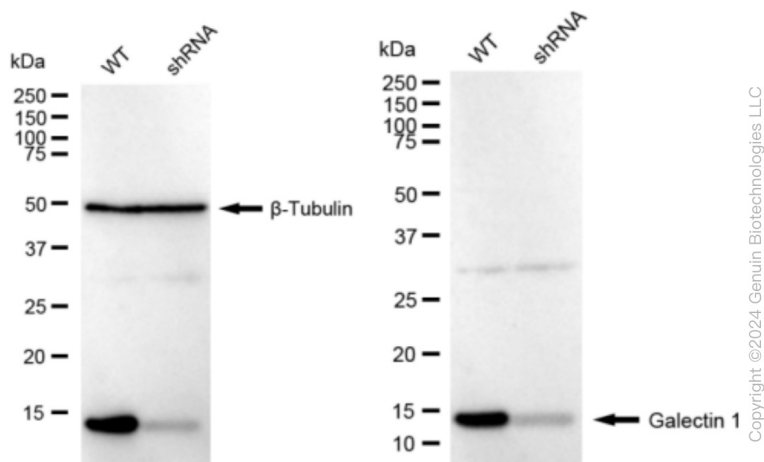


[View online »](#)

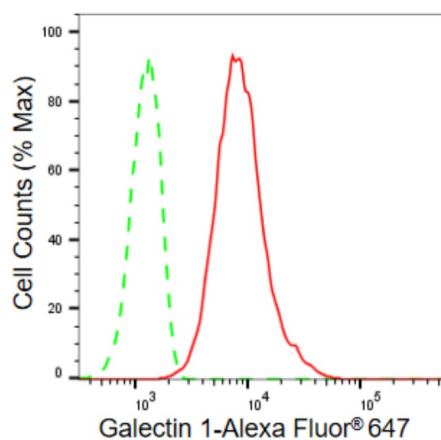
Product images:



Western blotting analysis using anti-Galectin 1 antibody . Total cell lysates (30 µg) from various cell lines were loaded and separated by SDS-PAGE. The blot was incubated with anti-Galectin 1 antibody and HRP-conjugated goat anti-rabbit secondary antibody respectively. Image was developed using anti-FeQ™ ECL Substrate Kit .



Western blotting analysis using anti-Galectin 1 antibody . Galectin 1 expression in wild type (WT) and Galectin 1 shRNA knockdown (KD) HeLa cells with 30 µg of total cell lysates. β-Tubulin serves as a loading control. The blot was incubated with anti-Galectin 1 antibody and HRP-conjugated goat anti-rabbit secondary antibody respectively. Image was developed using anti-FeQ™ ECL Substrate Kit .



Copyright ©2024 Genuin Biotechnologies LLC

Flow cytometric analysis of Galectin 1 expression in C2C12 cells using anti-Galectin 1 antibody .
Green, isotype control; red, Galectin 1.