

## Product datasheet for **TA424791**

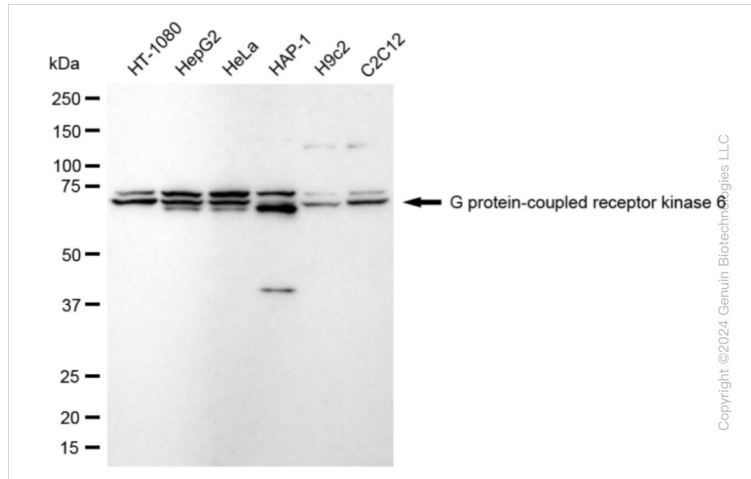
### GRK6 Rabbit Monoclonal Antibody [Clone ID: 24GB4870]

#### Product data:

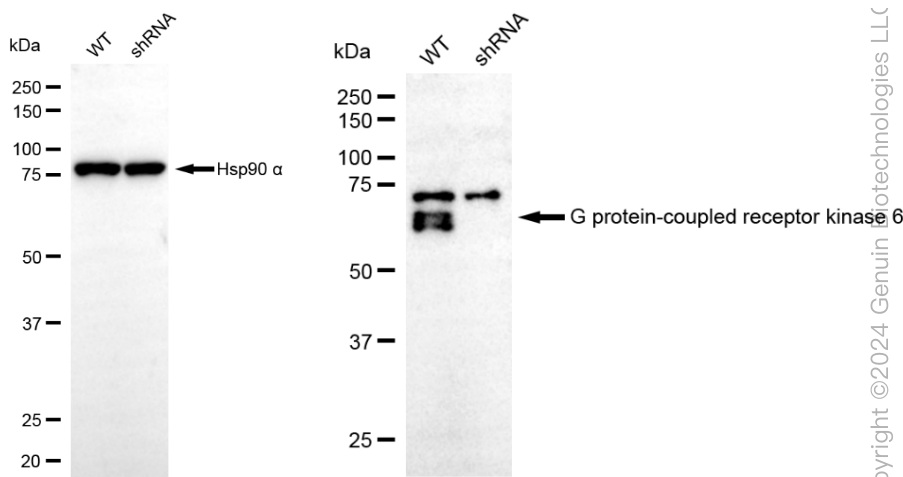
Product Type:	Primary Antibodies
Clone Name:	24GB4870
Applications:	FC, WB
Recommended Dilution:	Western Blotting (WB): 1:1,000-1:5,000, Flow Cytometry (FCM): 1:2,000
Reactivity:	Human, Mouse, Rat
Host:	Rabbit
Isotype:	IgG
Clonality:	Monoclonal
Immunogen:	A synthesized peptide derived from human GRK6
Formulation:	Supplied in PBS (pH 7.4) containing 50% glycerol, and 0.02% sodium azide.
Concentration:	Lot dependent
Purification:	Affinity Purified
Conjugation:	Unconjugated
Stability:	Store at -20 °C for one year.
Database Link:	<a href="#">P43250</a>
Synonyms:	EC 2.7.11; EC 2.7.11.16; GPRK6; G Protein-Coupled Receptor Kinase 6; G Protein-Coupled Receptor Kinase GRK6; GRK6

[View online »](#)

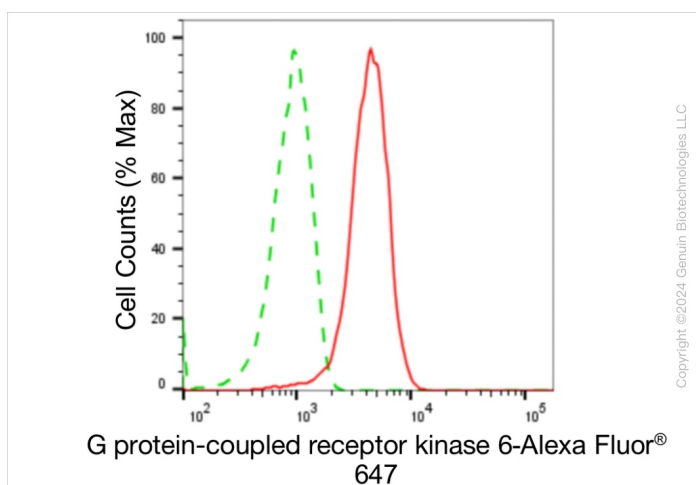
## Product images:



Western blotting analysis using anti-G protein-coupled receptor kinase 6 antibody. Total cell lysates (30 µg) from various cell lines were loaded and separated by SDS-PAGE. The blot was incubated with anti-G protein-coupled receptor kinase 6 antibody and HRP-conjugated goat anti-rabbit secondary antibody respectively. Image was developed using anti-NaQ™ ECL Substrate Kit.



Western blotting analysis using anti-G protein-coupled receptor kinase 6 antibody. G protein-coupled receptor kinase 6 expression in wild type (WT) and G protein-coupled receptor kinase 6 (GRK6) shRNA knockdown (KD) HeLa cells with 20 µg of total cell lysates. Hsp90 α serves as a loading control. The blot was incubated with anti-G protein-coupled receptor kinase 6 antibody and HRP-conjugated goat anti-rabbit secondary antibody respectively. Image was developed using anti-NaQ™ ECL Substrate Kit.



Flow cytometric analysis of G protein-coupled receptor kinase 6 expression in HepG2 cells using anti-G protein-coupled receptor kinase 6 antibody. Green, isotype control; red, G protein-coupled receptor kinase 6.