

Product datasheet for **TA424755**

EIF4A1 Rabbit Monoclonal Antibody [Clone ID: 23GB3835]

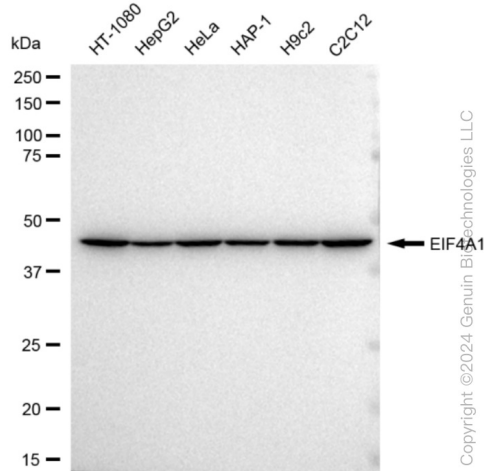
Product data:

Product Type:	Primary Antibodies
Clone Name:	23GB3835
Applications:	FC, WB
Recommended Dilution:	Western Blotting (WB): 1:1,000-1:5,000, Flow Cytometry (FCM): 1:2,000
Reactivity:	Human, Mouse, Rat
Host:	Rabbit
Isotype:	IgG
Clonality:	Monoclonal
Immunogen:	A synthesized peptide derived from human eIF4A1
Formulation:	Supplied in PBS (pH 7.4) containing 50% glycerol, and 0.02% sodium azide.
Concentration:	Lot dependent
Purification:	Affinity Purified
Conjugation:	Unconjugated
Stability:	Store at -20 °C for one year.
Database Link:	P60842
Synonyms:	ATP-Dependent RNA Helicase EIF4A-1; DDX2A; EC 3.6.1; EC 3.6.4.13; EIF-4A; EIF-4A-I; EIF4A; EIF4A-I; EIF4A1; Eukaryotic Initiation Factor 4A; Eukaryotic Initiation Factor 4A-I; Eukaryotic Translation Initiation Factor 4A; Eukaryotic Translation Initiation Factor 4A, Isoform 1; Eukaryotic Translation Initiation Factor 4A1

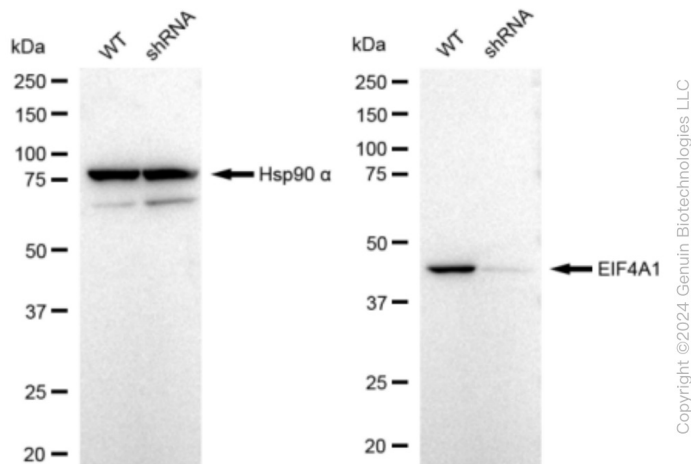


[View online »](#)

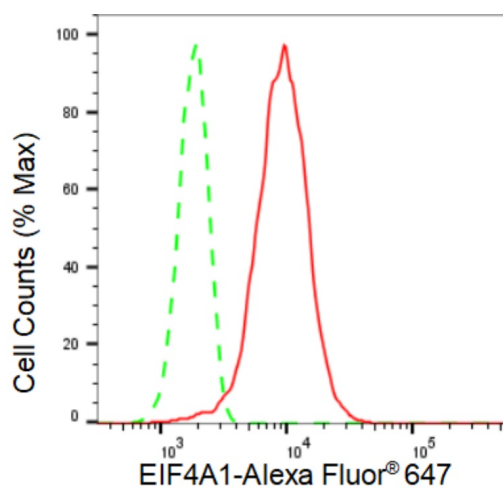
Product images:



Western blotting analysis using anti-EIF4A1 antibody . Total cell lysates (30 µg) from various cell lines were loaded and separated by SDS-PAGE. The blot was incubated with anti-EIF4A1 antibody and HRP-conjugated goat anti-rabbit secondary antibody respectively. Image was developed using anti-FeQ™ ECL Substrate Kit .



Western blotting analysis using anti-EIF4A1 antibody . EIF4A1 expression in wild type (WT) and EIF4A1 shRNA knockdown (KD) HeLa cells with 30 µg of total cell lysates. Hsp90 α serves as a loading control. The blot was incubated with anti-EIF4A1 antibody and HRP-conjugated goat anti-rabbit secondary antibody respectively. Image was developed using anti-FeQ™ ECL Substrate Kit .



Copyright ©2024 Genuin Biotechnologies LLC

Flow cytometric analysis of EIF4A1 expression in HT-1080 cells using anti-EIF4A1 antibody . Green, isotype control; red, EIF4A1.