

## Product datasheet for **TA424754**

### EIF3B Rabbit Monoclonal Antibody [Clone ID: 24GB4545]

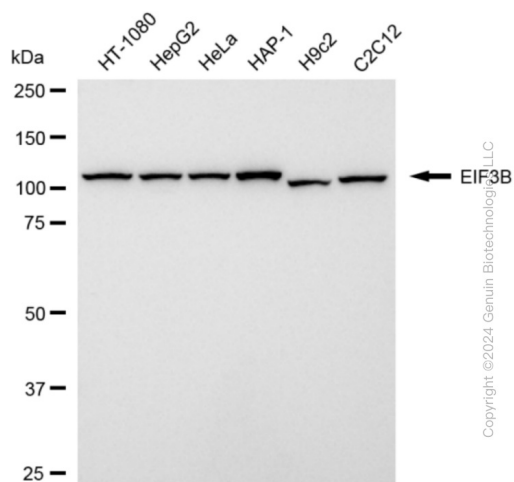
#### Product data:

Product Type:	Primary Antibodies
Clone Name:	24GB4545
Applications:	WB
Recommended Dilution:	Western Blotting (WB): 1:1,000-1:5,000
Reactivity:	Human, Mouse, Rat
Host:	Rabbit
Isotype:	IgG
Clonality:	Monoclonal
Immunogen:	A synthesized peptide derived from human eIF3B
Formulation:	Supplied in PBS (pH 7.4) containing 50% glycerol, and 0.02% sodium azide.
Concentration:	Lot dependent
Purification:	Affinity Purified
Conjugation:	Unconjugated
Stability:	Store at -20 °C for one year.
Database Link:	<a href="#">P55884</a>
Synonyms:	EIF-3-Eta; EIF3 P110; EIF3 P116; EIF3-ETA; EIF3-P110; EIF3-P116; EIF3B; EIF3b; EIF3S9; Eukaryotic Translation Initiation Factor 3 Subunit 9; Eukaryotic Translation Initiation Factor 3 Subunit B; Eukaryotic Translation Initiation Factor 3, Subunit 9 (Eta, 116kD); Eukaryotic Translation Initiation Factor 3, Subunit 9 Eta, 116kDa; Eukaryotic Translation Initiation Factor 3, Subunit B; HPrt1; Protein Synthesis 1; PRT1; Prt1 Homolog

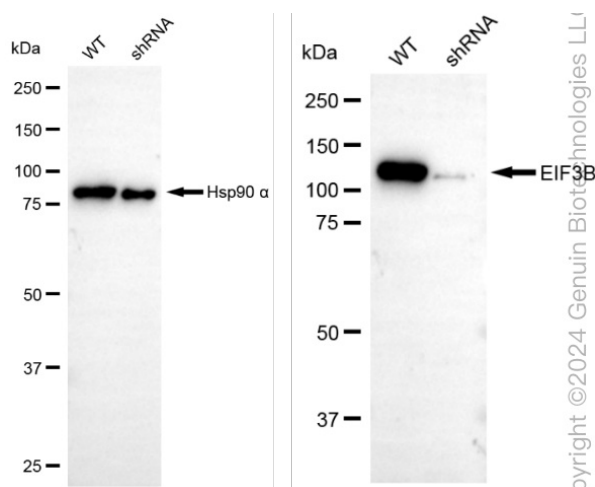


[View online »](#)

## Product images:



Western blotting analysis using anti-EIF3B antibody . Total cell lysates (30 µg) from various cell lines were loaded and separated by SDS-PAGE. The blot was incubated with anti-EIF3B antibody and HRP-conjugated goat anti-rabbit secondary antibody respectively. Image was developed using anti-NaQ™ ECL Substrate Kit . EIF3B, eukaryotic translation initiation factor 3 subunit B.



Western blotting analysis using anti-EIF3B antibody . EIF3B expression in wild type (WT) and EIF3B shRNA knockdown (KD) HeLa cells with 20 µg of total cell lysates. Hsp90 α serves as a loading control. The blot was incubated with anti-EIF3B antibody and HRP-conjugated goat anti-rabbit secondary antibody respectively. Image was developed using anti-NaQ™ ECL Substrate Kit .