

Product datasheet for **TA424751**

EHMT2 Rabbit Monoclonal Antibody [Clone ID: 23GB825]

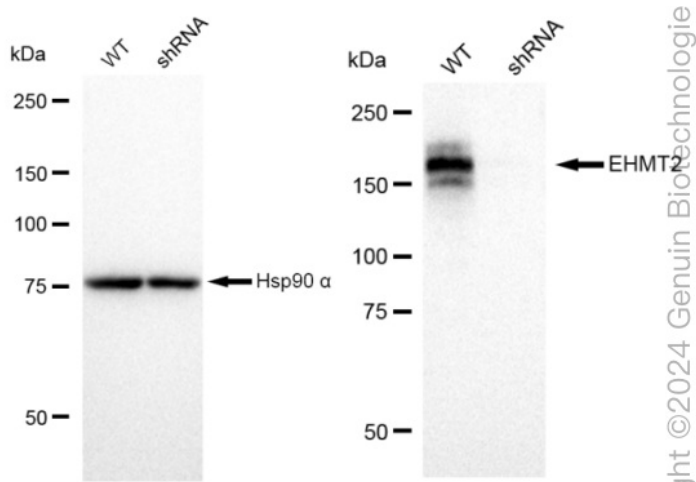
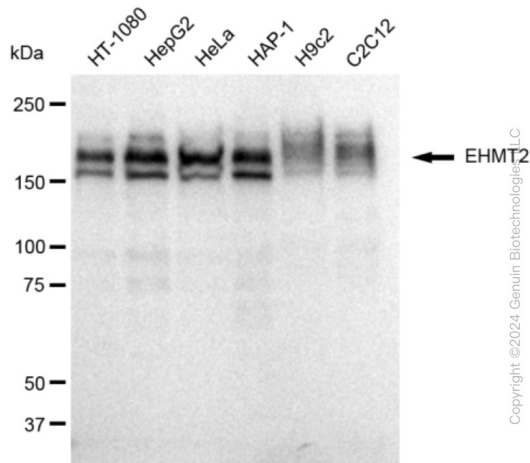
Product data:

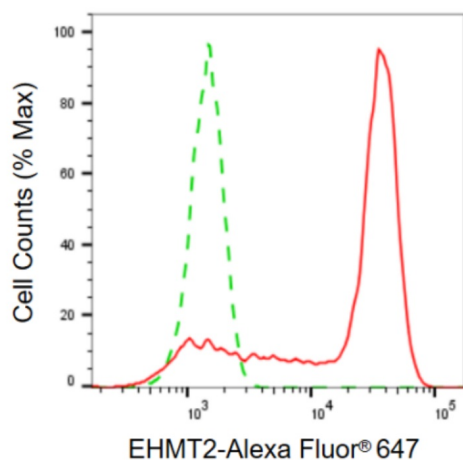
Product Type:	Primary Antibodies
Clone Name:	23GB825
Applications:	FC, ICC, WB
Recommended Dilution:	Western Blotting (WB): 1:1,000-1:5,000, Flow Cytometry (FCM): 1:2,000, Immunocytochemistry (IC): 1:100-1:1,000
Reactivity:	Human, Mouse, Rat
Host:	Rabbit
Isotype:	IgG
Clonality:	Monoclonal
Immunogen:	A synthesized peptide derived from human EHMT2
Formulation:	Supplied in PBS (pH 7.4) containing 50% glycerol, and 0.02% sodium azide.
Concentration:	Lot dependent
Purification:	Affinity Purified
Conjugation:	Unconjugated
Stability:	Store at -20 °C for one year.
Database Link:	Q96KQ7
Synonyms:	Ankyrin Repeat-Containing Protein; BAT8; C6orf30; Chromosome 6 Open Reading Frame 30; EC 2.1.1.-; EC 2.1.1.367; Em:AF134726.3; Euchromatic Histone-Lysine N-Methyltransferase 2; Euchromatic Histone Lysine Methyltransferase 2; G9A; G9A Histone Methyltransferase; GAT8; H3-K9-HMTase 3; Histone-Lysine N-Methyltransferase, H3 Lysine-9 Specific 3; Histone-Lysine N-Methyltransferase EHMT2; Histone H3-K9 Methyltransferase 3; HLA-B-Associated Transcript 8; HLA-B Associated Transcript 8; KMT1C; Lysine N-Methyltransferase 1C; NG36; NG36/G9a; Protein G9a



[View online »](#)

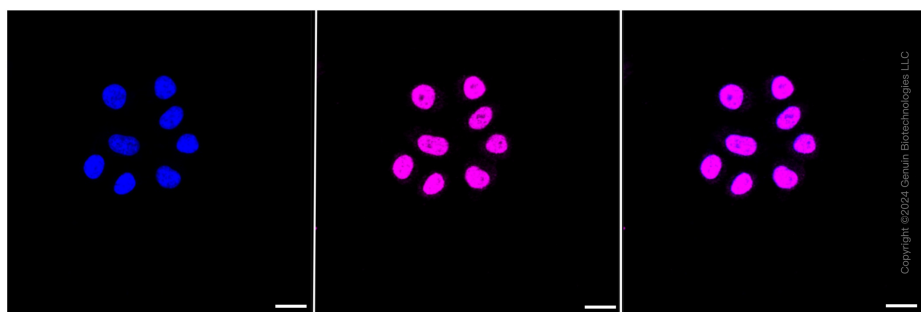
Product images:





Copyright ©2024 Genuin Biotechnologies LLC

Flow cytometric analysis of EHMT2 expression in HepG2 cells using anti-EHMT2 antibody . Green, isotype control; red, EHMT2 .



Immunocytochemical staining of HepG2 cells with EHMT2 antibody . Nuclei were stained blue with DAPI; EHMT2 was stained magenta with Alexa Fluor® 647. Scale bar: 20 μ m.