

Product datasheet for **TA424750**

EGFR Rabbit Monoclonal Antibody [Clone ID: 23GB815]

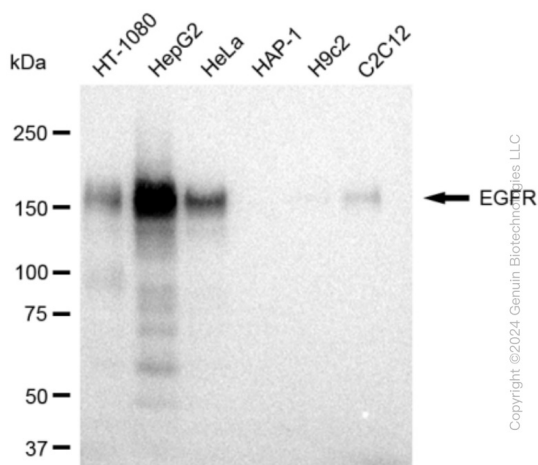
Product data:

Product Type:	Primary Antibodies
Clone Name:	23GB815
Applications:	FC, ICC, WB
Recommended Dilution:	Western Blotting (WB): 1:1,000-1:5,000, Flow Cytometry (FCM): 1:2,000, Immunocytochemistry (IC): 1:100-1:1,000
Reactivity:	Human, Mouse
Host:	Rabbit
Isotype:	IgG
Clonality:	Monoclonal
Immunogen:	A synthesized peptide derived from human EGFR
Formulation:	Supplied in PBS (pH 7.4) containing 50% glycerol, and 0.02% sodium azide.
Concentration:	Lot dependent
Purification:	Affinity Purified
Conjugation:	Unconjugated
Stability:	Store at -20 °C for one year.
Database Link:	P00533
Synonyms:	Avian Erythroblastic Leukemia Viral (V-Erb-B) Oncogene Homolog; Cell Growth Inhibiting Protein 40; Cell Proliferation-Inducing Protein 61; EC 2.7.10; EC 2.7.10.1; EGFR; EGFR VIII; Epidermal Growth Factor Receptor; Epidermal Growth Factor Receptor (Avian Erythroblastic Leukemia Viral (V-Erb-B) Oncogene Homolog); Epidermal Growth Factor Receptor Tyrosine Kinase Domain; Erb-B2 Receptor Tyrosine Kinase 1; ERBB; ERBB1; ERRP; Erythroblastic Leukemia Viral (V-Erb-B) Oncogene Homolog (Avian); HER1; MENA; NISBD2; PIG61; Proto-Oncogene C-ErbB-1; Receptor Tyrosine-Protein Kinase ErbB-1

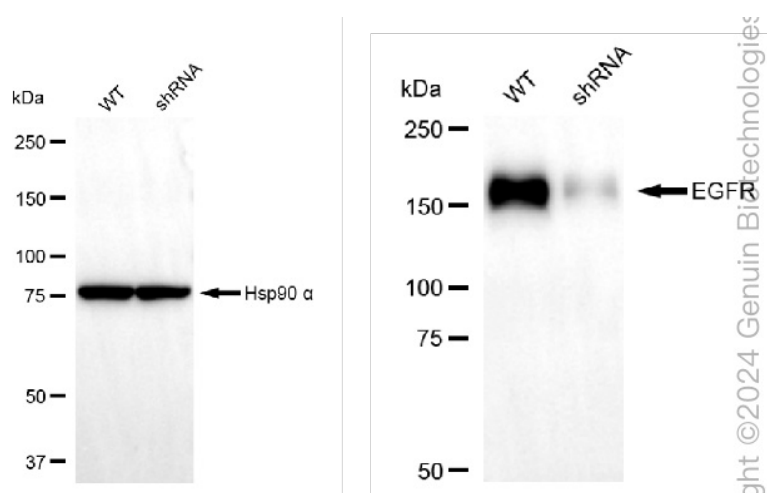


[View online »](#)

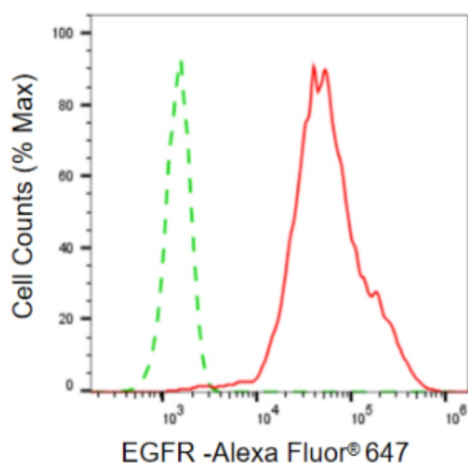
Product images:



Western blotting analysis using anti-EGFR antibody . Total cell lysates (30 µg) from various cell lines were loaded and separated by SDS-PAGE. The blot was incubated with anti-EGFR antibody and HRP-conjugated goat anti-rabbit secondary antibody respectively. Image was developed using anti-FeQ™ ECL Substrate Kit .

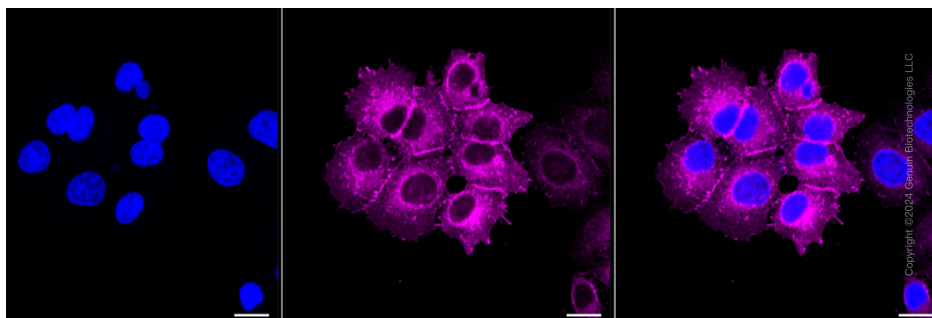


Western blotting analysis using anti-EGFR antibody . EGFR expression in wild type (WT) and EGFR shRNA knockdown (KD) HeLa cells with 30 µg of total cell lysates . Hsp90 α serves as a loading control. The blot was incubated with anti-EGFR antibody and HRP-conjugated goat anti-rabbit secondary antibody respectively. Image was developed using anti-FeQ™ ECL Substrate Kit .



Copyright ©2024 Genuin Biotechnologies LLC

Flow cytometric analysis of EGFR expression in HepG2 cells using anti-EGFR antibody . Green, isotype control; red, EGFR.



Immunocytochemical staining of HepG2 cells with EGFR antibody . Nuclei were stained blue with DAPI; EGFR was stained magenta with Alexa Fluor® 647. Images were taken using anti-Leica stellaris 5. Protein abundance based on laser Intensity and smart gain: High. Scale bar: 20 µm.