

Product datasheet for **TA424742**

DUT Rabbit Monoclonal Antibody [Clone ID: 23GB5240]

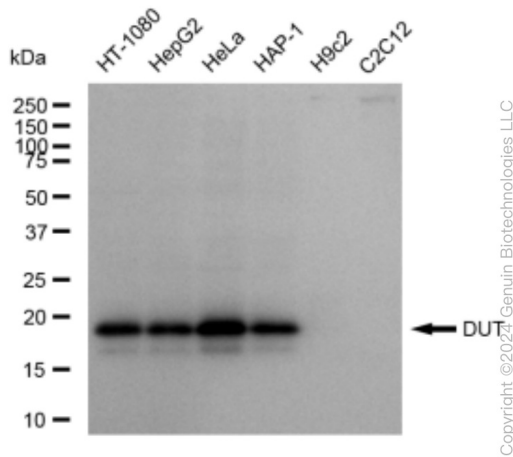
Product data:

Product Type:	Primary Antibodies
Clone Name:	23GB5240
Applications:	FC, WB
Recommended Dilution:	Western Blotting (WB): 1:1,000-1:5,000, Flow Cytometry (FCM): 1:2,000
Reactivity:	Human
Host:	Rabbit
Isotype:	IgG
Clonality:	Monoclonal
Immunogen:	A synthesized peptide derived from human DUT
Formulation:	Supplied in PBS (pH 7.4) containing 50% glycerol, and 0.02% sodium azide.
Concentration:	Lot dependent
Purification:	Affinity Purified
Conjugation:	Unconjugated
Stability:	Store at -20 °C for one year.
Database Link:	P33316
Synonyms:	BMFDMS; Deoxyuridine 5'-Triphosphate Nucleotidohydrolase, Mitochondrial; Deoxyuridine Triphosphatase; DUT; DUTPASE; DUTPase; DUTP Diphosphatase; DUTP Nucleotidohydrolase; DUTP Pyrophosphatase; EC 3.6.1.23

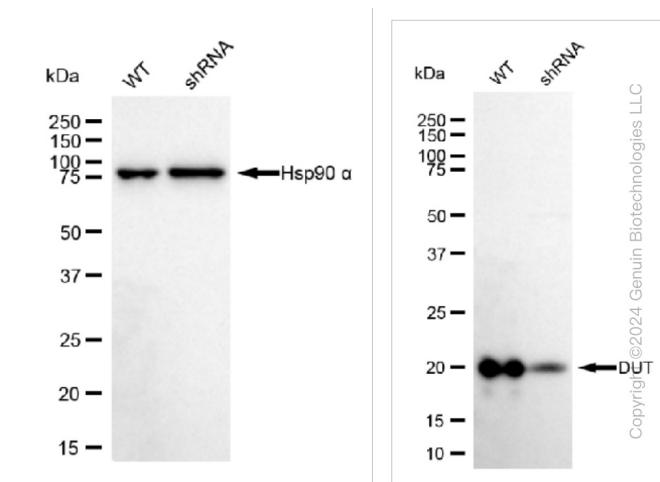


[View online »](#)

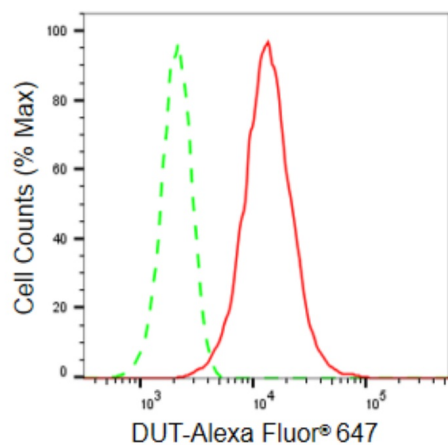
Product images:



Western blotting analysis using anti-DUT antibody . Total cell lysates (30 µg) from various cell lines were loaded and separated by SDS-PAGE. The blot was incubated with anti-DUT antibody and HRP-conjugated goat anti-rabbit secondary antibody respectively. Image was developed using anti-FeQ™ ECL Substrate Kit .



Western blotting analysis using anti-DUT antibody . DUT expression in wild type (WT) and DUT shRNA knockdown (KD) HeLa cells with 30 µg of total cell lysates . β-Tubulin serves as a loading control. The blot was incubated with anti-DUT antibody and HRP-conjugated goat anti-rabbit secondary antibody respectively. Image was developed using anti-FeQ™ ECL Substrate Kit .



Copyright ©2024 Genuin Biotechnologies LLC

Flow cytometric analysis of DUT expression in HeLa cells using anti-DUT antibody . Green, isotype control; red, DUT.