

Product datasheet for **TA424710**

CLASP1 Rabbit Monoclonal Antibody [Clone ID: 23GB3810]

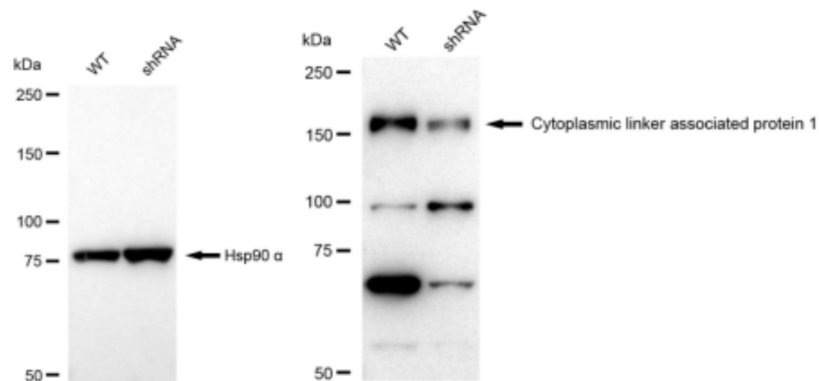
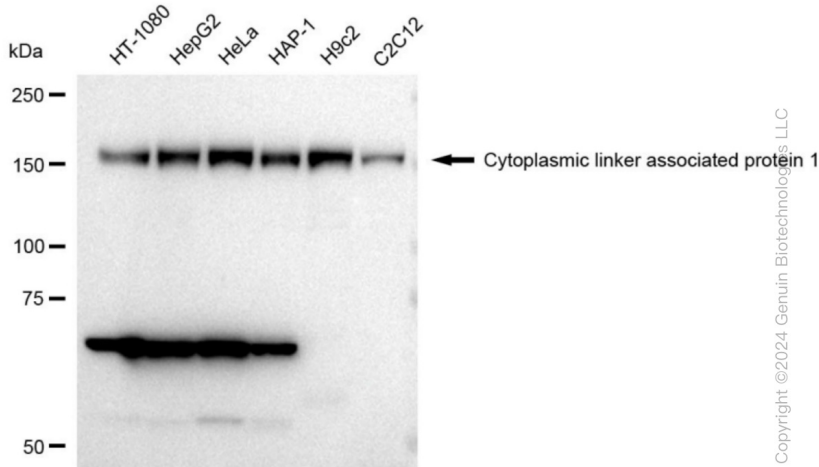
Product data:

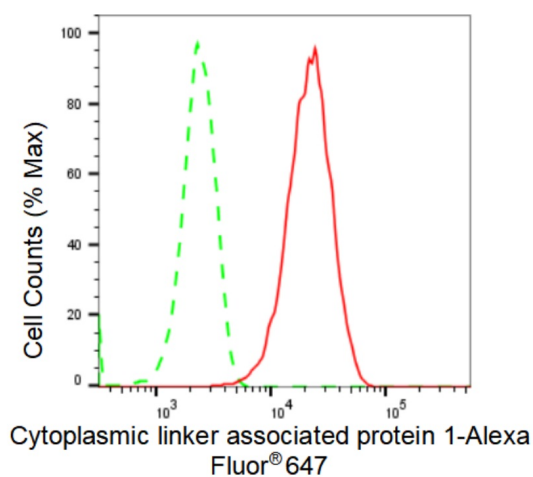
Product Type:	Primary Antibodies
Clone Name:	23GB3810
Applications:	FC, ICC, WB
Recommended Dilution:	Western Blotting (WB): 1:1,000-1:5,000, Flow Cytometry (FCM): 1:2,000, Immunocytochemistry (IC): 1:100-1:1,000
Reactivity:	Human, Mouse, Rat
Host:	Rabbit
Isotype:	IgG
Clonality:	Monoclonal
Immunogen:	A synthesized peptide derived from human CLASP1
Formulation:	Supplied in PBS (pH 7.4) containing 50% glycerol, and 0.02% sodium azide.
Concentration:	Lot dependent
Purification:	Affinity Purified
Conjugation:	Unconjugated
Stability:	Store at -20 °C for one year.
Database Link:	Q7Z460
Synonyms:	CLASP1; CLIP-Associating Protein 1; Cytoplasmic Linker-Associated Protein 1; Cytoplasmic Linker Associated Protein 1; HOrbit1; KIAA0622; MAST1; Multiple Asters 1; Multiple Asters Homolog 1; Protein Orbit Homolog 1



[View online »](#)

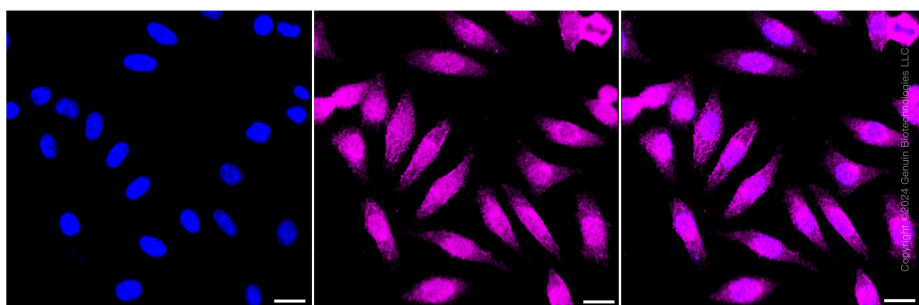
Product images:





Copyright ©2024 Genuin Biotechnologies LLC

Flow cytometric analysis of Cytoplasmic linker associated protein 1 expression in HepG2 cells using anti-Cytoplasmic linker associated protein 1 antibody . Green, isotype control; red, Cytoplasmic linker associated protein 1.



Immunocytochemical staining of HepG2 cells with Cytoplasmic linker associated protein 1 antibody . Nuclei were stained blue with DAPI; Cytoplasmic linker associated protein 1 was stained magenta with Alexa Fluor® 647. Images were taken using anti-Leica stellaris 5. Protein abundance based on laser Intensity and smart gain: Medium. Scale bar: 20 μ m.