

Product datasheet for **TA424709**

CYFIP1 Rabbit Monoclonal Antibody [Clone ID: 23GB1605]

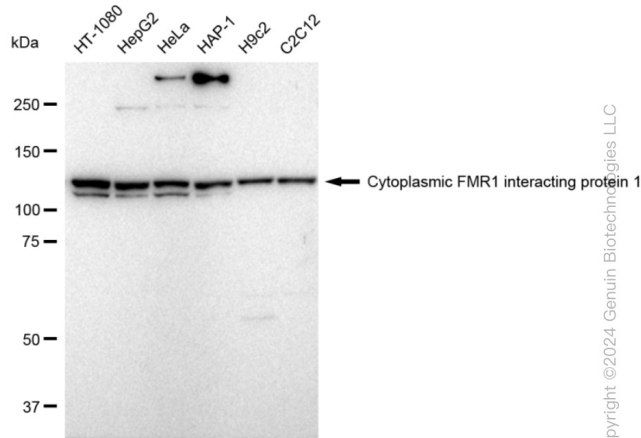
Product data:

| | |
|-----------------------|---|
| Product Type: | Primary Antibodies |
| Clone Name: | 23GB1605 |
| Applications: | FC, ICC, WB |
| Recommended Dilution: | Western Blotting (WB): 1:1,000-1:5,000, Flow Cytometry (FCM): 1:2,000, Immunocytochemistry (IC): 1:100-1:1,000 |
| Reactivity: | Human, Mouse, Rat |
| Host: | Rabbit |
| Isotype: | IgG |
| Clonality: | Monoclonal |
| Immunogen: | A synthesized peptide derived from human CYFIP1 |
| Formulation: | Supplied in PBS (pH 7.4) containing 50% glycerol, and 0.02% sodium azide. |
| Concentration: | Lot dependent |
| Purification: | Affinity Purified |
| Conjugation: | Unconjugated |
| Stability: | Store at -20 °C for one year. |
| Database Link: | Q7L576 |
| Synonyms: | CYFIP1; Cytoplasmic FMR1 Interacting Protein 1; Cytoplasmic FMR1-Interacting Protein 1; Cytoplasmic FMRP Interacting Protein 1; KIAA; P140SRA-1; P140sra-1; Selective Hybridizing Clone; Specifically Rac1-Associated Protein 1; SRA-1; Sra-1; SRA1 |



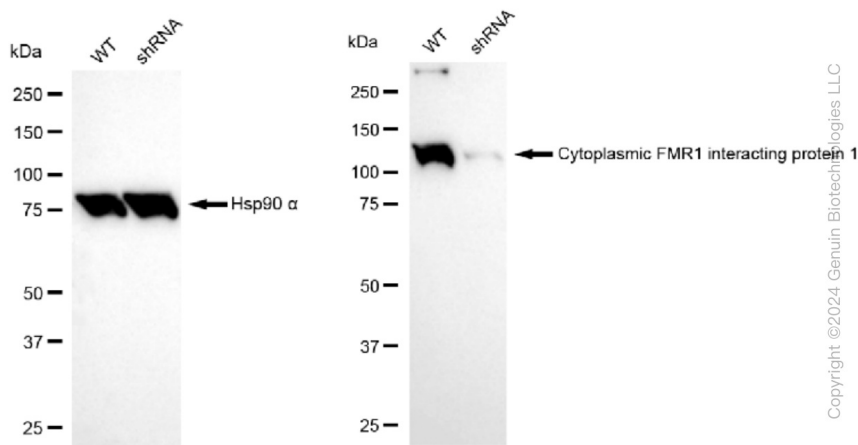
[View online »](#)

Product images:



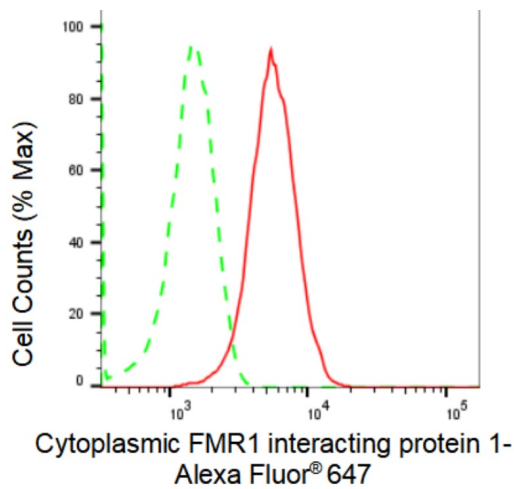
Copyright ©2024 Genuin Biotechnologies LLC

Western blotting analysis using anti-Cytoplasmic FMR1 interacting protein 1 antibody . Total cell lysates (30 µg) from various cell lines were loaded and separated by SDS-PAGE. The blot was incubated with anti-Cytoplasmic FMR1 interacting protein 1 antibody and HRP-conjugated goat anti-rabbit secondary antibody respectively. Image was developed using anti-FeQ™ ECL Substrate Kit .



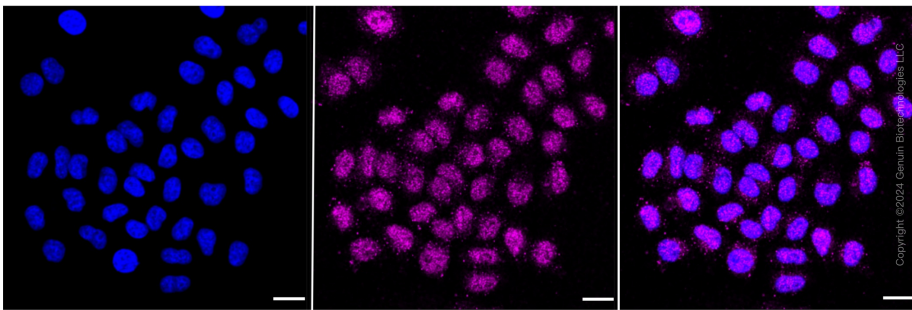
Copyright ©2024 Genuin Biotechnologies LLC

Western blotting analysis using anti-Cytoplasmic FMR1 interacting protein 1 antibody . Cytoplasmic FMR1 interacting protein 1 expression in wild type (WT) and cytoplasmic FMR1 interacting protein 1 shRNA knockdown (KD) HeLa cells with 30 µg of total cell lysates . β-Tubulin serves as a loading control. The blot was incubated with anti-Cytoplasmic FMR1 interacting protein 1 antibody and HRP-conjugated goat anti-rabbit secondary antibody respectively. Image was developed using anti-FeQ™ ECL Substrate Kit .



Copyright ©2024 Genuin Biotechnologies LLC

Flow cytometric analysis of Cytoplasmic FMR1 interacting protein 1 expression in HepG2 cells using anti-Cytoplasmic FMR1 interacting protein 1 antibody . Green, isotype control; red, Cytoplasmic FMR1 interacting protein 1.



Immunocytochemical staining of HepG2 cells with Cytoplasmic FMR1 interacting protein 1 antibody . Nuclei were stained blue with DAPI; Cytoplasmic FMR1 interacting protein 1 was stained magenta with Alexa Fluor® 647. Images were taken using anti-Leica stellaris 5. Protein abundance based on laser Intensity and smart gain: High. Scale bar: 20 μ m.