

Product datasheet for **TA424661**

CLIP1 Rabbit Monoclonal Antibody [Clone ID: 23GB3080]

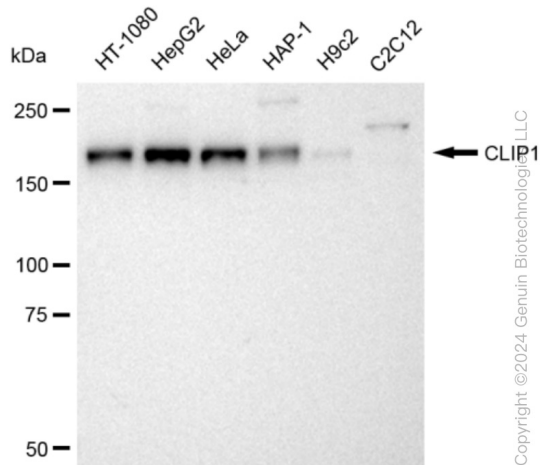
Product data:

Product Type:	Primary Antibodies
Clone Name:	23GB3080
Applications:	FC, ICC, WB
Recommended Dilution:	Western Blotting (WB): 1:1,000-1:5,000, Flow Cytometry (FCM): 1:2,000, Immunocytochemistry (IC): 1:100-1:1,000
Reactivity:	Human, Mouse
Host:	Rabbit
Isotype:	IgG
Clonality:	Monoclonal
Immunogen:	A synthesized peptide derived from CLIP170
Formulation:	Supplied in PBS (pH 7.4) containing 50% glycerol, and 0.02% sodium azide.
Concentration:	Lot dependent
Purification:	Affinity Purified
Conjugation:	Unconjugated
Stability:	Store at -20 °C for one year.
Database Link:	P30622
Synonyms:	ATP/GTP-Binding Protein; ATP/GTPbinding Protein; Cleavage And Polyadenylation Factor I Subunit 1; Cleavage Factor Polyribonucleotide Kinase Subunit 1; CLP1; CLP1, Cleavage And Polyadenylation Factor I Subunit, Homolog (S. Cerevisiae); EC 2.7.1.78; HCLP1; HClp1; HEAB; Homolog Of Yeast CFIA Subunit Clp1p; Polyadenylation Factor Clp1; Polynucleotide Kinase Clp1; Polyribonucleotide 5'-Hydroxyl-Kinase; Polyribonucleotide 5'-Hydroxyl-Kinase Clp1; Pre-MRNA Cleavage Complex II Protein Clp1

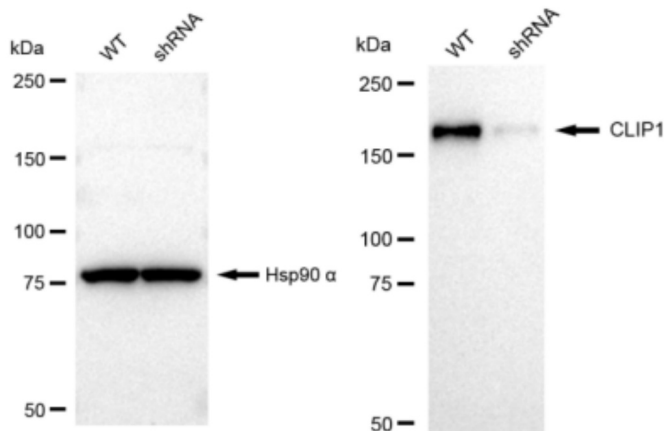


[View online »](#)

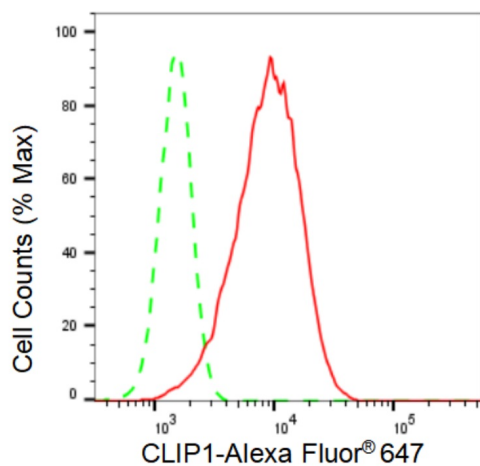
Product images:



Western blotting analysis using anti-CLIP1 antibody . Total cell lysates (30 µg) from various cell lines were loaded and separated by SDS-PAGE. The blot was incubated with anti-CLIP1 antibody and HRP-conjugated goat anti-rabbit secondary antibody respectively. Image was developed using anti-FeQ™ ECL Substrate Kit .

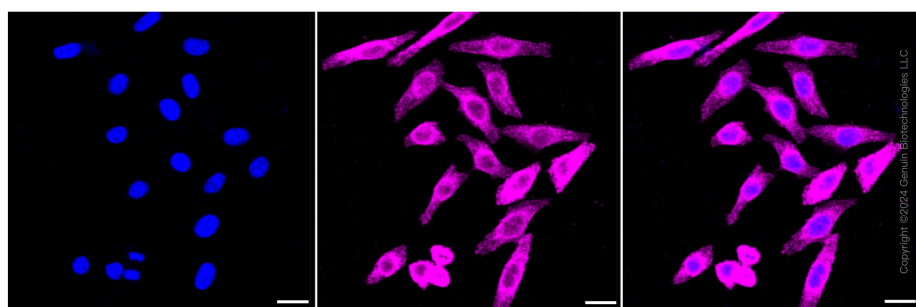


Western blotting analysis using anti-CLIP1 antibody . CLIP1 expression in wild type (WT) and CLIP1 shRNA knockdown (KD) HeLa cells with 30 µg of total cell lysates . Hsp90 α serves as a loading control. The blot was incubated with anti-CLIP1 antibody and HRP-conjugated goat anti-rabbit secondary antibody respectively. Image was developed using anti-FeQ™ ECL Substrate Kit .



Copyright ©2024 Genuin Biotechnologies LLC

Flow cytometric analysis of CLIP1 expression in HepG2 cells using anti-CLIP1 antibody . Green, isotype control; red, CLIP1.



Copyright ©2024 Genuin Biotechnologies LLC

Immunocytochemical staining of HepG2 cells with CLIP1 antibody . Nuclei were stained blue with DAPI; CLIP1 was stained magenta with Alexa Fluor® 647. Images were taken using anti-Leica stellaris 5. Protein abundance based on laser Intensity and smart gain: Medium. Scale bar: 20 μ m.