

Product datasheet for **TA424647**

CHAF1B Rabbit Monoclonal Antibody [Clone ID: 23GB3765]

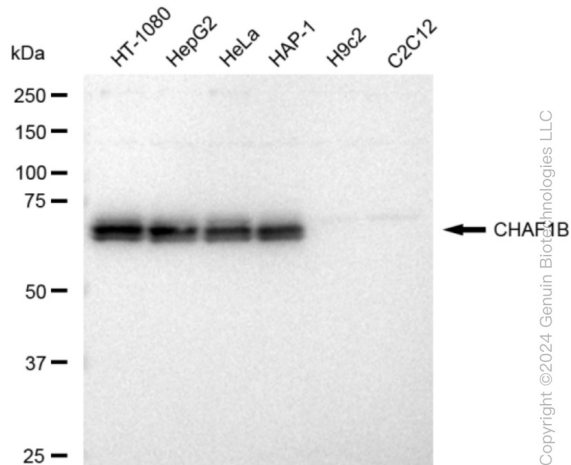
Product data:

Product Type:	Primary Antibodies
Clone Name:	23GB3765
Applications:	FC, WB
Recommended Dilution:	Western Blotting (WB): 1:1,000-1:5,000, Flow Cytometry (FCM): 1:2,000
Reactivity:	Human
Host:	Rabbit
Isotype:	IgG
Clonality:	Monoclonal
Immunogen:	A synthesized peptide derived from human p60 CAF1
Formulation:	Supplied in PBS (pH 7.4) containing 50% glycerol, and 0.02% sodium azide.
Concentration:	Lot dependent
Purification:	Affinity Purified
Conjugation:	Unconjugated
Stability:	Store at -20 °C for one year.
Database Link:	Q13112
Synonyms:	CAF-1; CAF-1 Subunit B; CAF-I 60 KDa Subunit; CAF-I P60; CAF-IP60; CAF1; CAF1A; CAF1P60; CHAF1B; Chromatin Assembly Factor 1 Subunit B; Chromatin Assembly Factor 1, Subunit B (P60); Chromatin Assembly Factor I, P60 Subunit; Chromatin Assembly Factor I P60 Subunit; Human Chromatin Assembly Factor-I P60 Subunit; M-Phase Phosphoprotein 7; MPHOSPH7; MPP7

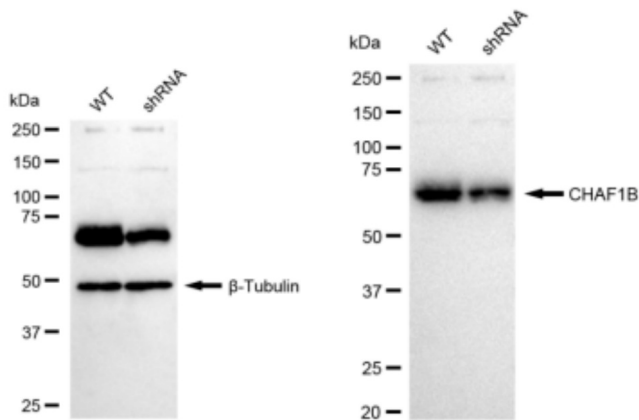


[View online »](#)

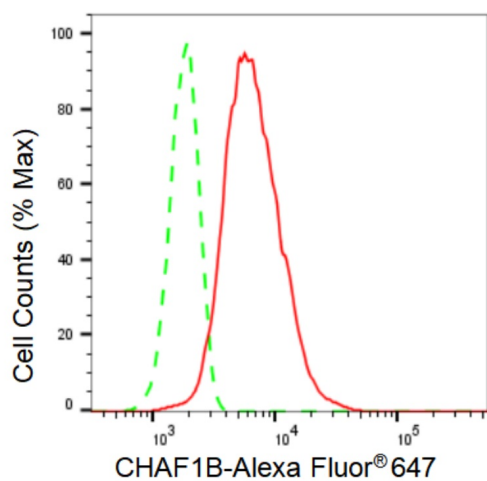
Product images:



Western blotting analysis using anti-CHAF1B antibody . Total cell lysates (30 µg) from various cell lines were loaded and separated by SDS-PAGE. The blot was incubated with anti-CHAF1B antibody and HRP-conjugated goat anti-rabbit secondary antibody respectively. Image was developed using anti-FeQ™ ECL Substrate Kit .



Western blotting analysis using anti-CHAF1B antibody . CHAF1B expression in wild type (WT) and CHAF1B shRNA knockdown (KD) HeLa cells with 30 µg of total cell lysates. β-Tubulin serves as a loading control. The blot was incubated with anti-CHAF1B antibody and HRP-conjugated goat anti-rabbit secondary antibody respectively. Image was developed using anti-FeQ™ ECL Substrate Kit .



Copyright ©2024 Genuin Biotechnologies LLC

Flow cytometric analysis of CHAF1B expression in HT-1080 cells using anti-CHAF1B antibody .
Green, isotype control; red, CHAF1B.