

## Product datasheet for **TA424637**

### CDC40 Rabbit Monoclonal Antibody [Clone ID: 23GB3445]

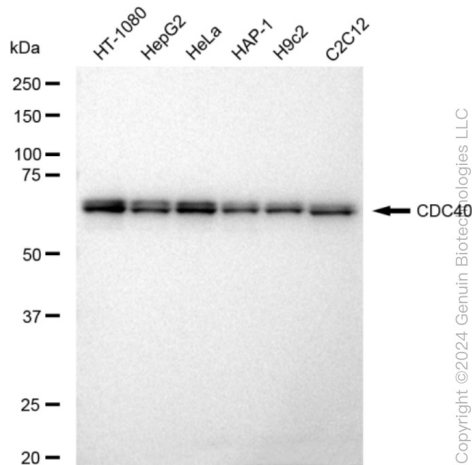
#### Product data:

Product Type:	Primary Antibodies
Clone Name:	23GB3445
Applications:	FC, ICC, WB
Recommended Dilution:	Western Blotting (WB): 1:1,000-1:5,000, Flow Cytometry (FCM): 1:2,000, Immunocytochemistry (IC): 1:100-1:1,000
Reactivity:	Human, Mouse, Rat
Host:	Rabbit
Isotype:	IgG
Clonality:	Monoclonal
Immunogen:	A synthesized peptide derived from human CDC40
Formulation:	Supplied in PBS (pH 7.4) containing 50% glycerol, and 0.02% sodium azide.
Concentration:	Lot dependent
Purification:	Affinity Purified
Conjugation:	Unconjugated
Stability:	Store at -20 °C for one year.
Database Link:	<a href="#">Q60508</a>
Synonyms:	CDC40; Cell Division Cycle 40; Cell Division Cycle 40 Homolog; Cell Division Cycle 40 Homolog (S. Cerevisiae); Cell Division Cycle 40 Homolog (Yeast); EH-Binding Protein 3; EHB3; Ehb3; FLJ10564; HPRP17; PCH15; Pre-mRNA-Processing Factor 17; Pre-mRNA Splicing Factor 17; PRP17; PRP17 Homolog; PRPF17

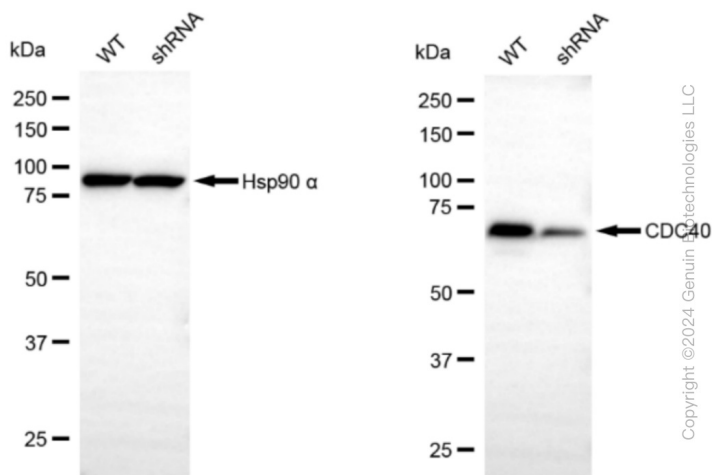


[View online »](#)

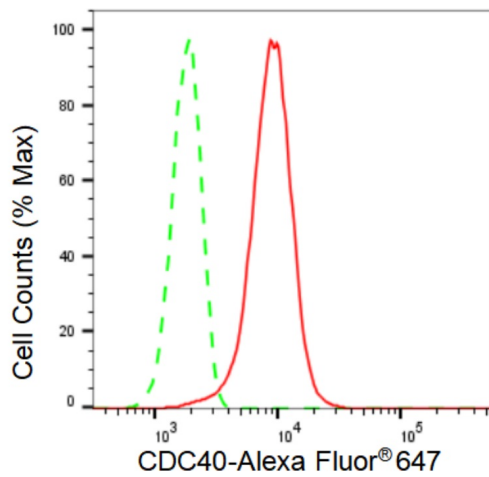
## Product images:



Western blotting analysis using anti-CDC40 antibody . Total cell lysates (30 µg) from various cell lines were loaded and separated by SDS-PAGE. The blot was incubated with anti-CDC40 antibody and HRP-conjugated goat anti-rabbit secondary antibody respectively. Image was developed using anti-FeQ™ ECL Substrate Kit .

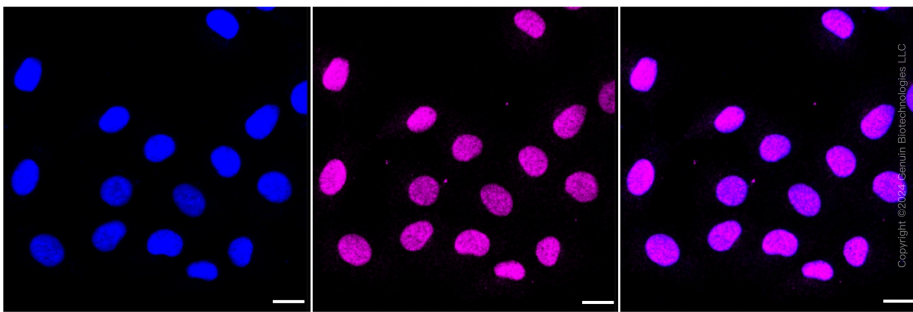


Western blotting analysis using anti-CDC40 antibody . CDC40 expression in wild type (WT) and CDC40 shRNA knockdown (KD) HeLa cells with 30 µg of total cell lysates. Hsp90 α serves as a loading control. The blot was incubated with anti-CDC40 antibody and HRP-conjugated goat anti-rabbit secondary antibody respectively. Image was developed using anti-FeQ™ ECL Substrate Kit .



Copyright ©2024 Genuin Biotechnologies LLC

Flow cytometric analysis of CDC40 expression in HT-1080 cells using anti-CDC40 antibody . Green, isotype control; red, CDC40.



Immunocytochemical staining of HT-1080 cells with CDC40 antibody . Nuclei were stained blue with DAPI; CDC40 was stained magenta with Alexa Fluor® 647. Images were taken using anti-Leica stellaris 5. Protein abundance based on laser Intensity and smart gain: Medium. Scale bar: 20 µm.