

## Product datasheet for **TA424618**

### MCAM Rabbit Monoclonal Antibody [Clone ID: 23GB2705]

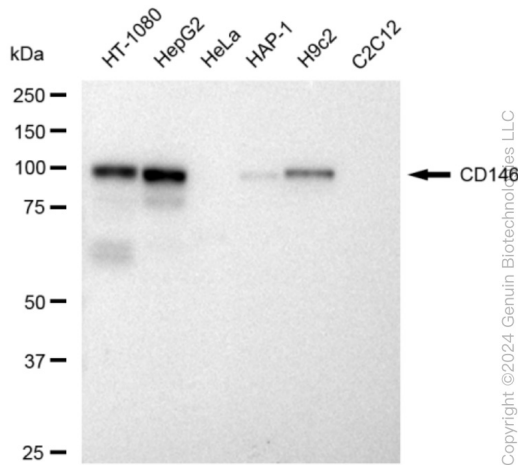
#### Product data:

Product Type:	Primary Antibodies
Clone Name:	23GB2705
Applications:	FC, ICC, WB
Recommended Dilution:	Western Blotting (WB): 1:1,000-1:5,000, Flow Cytometry (FCM): 1:2,000, Immunocytochemistry (IC): 1:100-1:1,000
Reactivity:	Human, Rat
Host:	Rabbit
Isotype:	IgG
Clonality:	Monoclonal
Immunogen:	A synthesized peptide derived from human CD146
Formulation:	Supplied in PBS (pH 7.4) containing 50% glycerol, and 0.02% sodium azide.
Concentration:	Lot dependent
Purification:	Affinity Purified
Conjugation:	Unconjugated
Stability:	Store at -20 °C for one year.
Database Link:	<a href="#">P43121</a>
Synonyms:	CD146; CD146 Antigen; Cell Surface Glycoprotein MUC18; Cell Surface Glycoprotein P1H12; Gicerin; HEMCAM; MCAM; Melanoma-Associated Antigen A32; Melanoma-Associated Antigen MUC18; Melanoma Adhesion Molecule; Melanoma Cell Adhesion Molecule; MELCAM; MeICAM; METCAM; MUC18; S-Endo 1 Endothelial-Associated Antigen

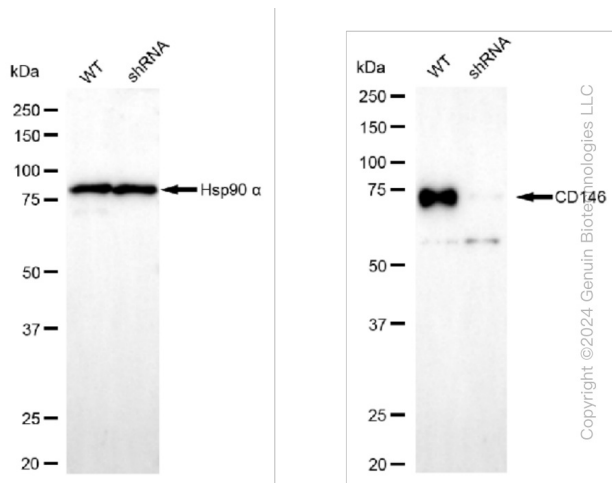


[View online »](#)

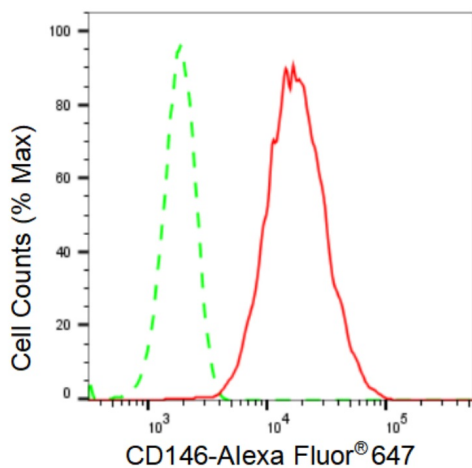
## Product images:



Western blotting analysis using anti-CD146 antibody . Total cell lysates (30 µg) from various cell lines were loaded and separated by SDS-PAGE. The blot was incubated with anti-CD146 antibody and HRP-conjugated goat anti-rabbit secondary antibody respectively. Image was developed using anti-FeQ™ ECL Substrate Kit .

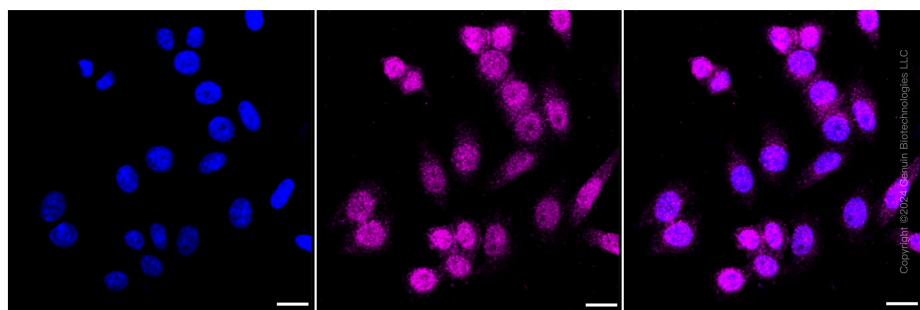


Western blotting analysis using anti-CD146 antibody . CD146 expression in wild type (WT) and CD146 shRNA knockdown (KD) HeLa cells with 30 µg of total cell lysates . Hsp90 α serves as a loading control. The blot was incubated with anti-CD146 antibody and HRP-conjugated goat anti-rabbit secondary antibody respectively. Image was developed using anti-FeQ™ ECL Substrate Kit .



Copyright ©2024 Genuin Biotechnologies LLC

Flow cytometric analysis of CD146 expression in HepG2 cells using anti-CD146 antibody . Green, isotype control; red, CD146.



Immunocytochemical staining of HepG2 cells with CD146 antibody . Nuclei were stained blue with DAPI; CD146 was stained magenta with Alexa Fluor® 647. Images were taken using anti-Leica stellaris 5. Protein abundance based on laser Intensity and smart gain: Medium. Scale bar: 20  $\mu$ m.