

Product datasheet for **TA424593**

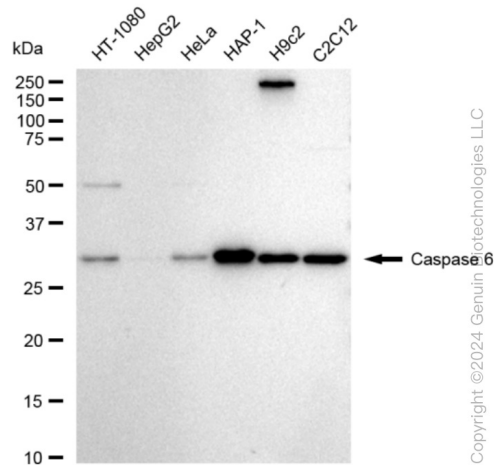
CASP6 Rabbit Monoclonal Antibody [Clone ID: 23GB5635]

Product data:

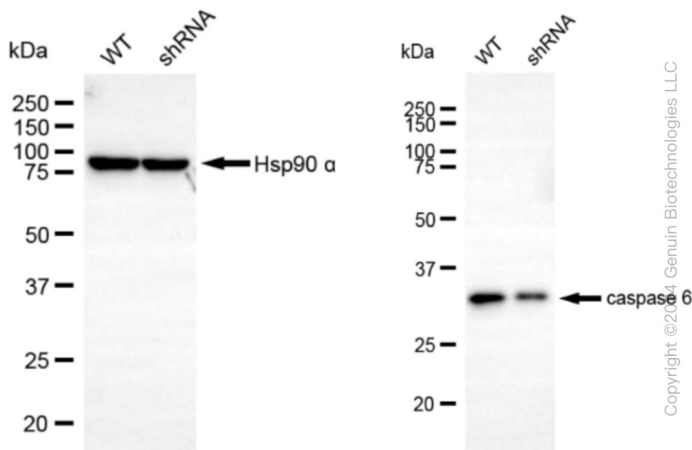
Product Type:	Primary Antibodies
Clone Name:	23GB5635
Applications:	ICC, WB
Recommended Dilution:	Western Blotting (WB): 1:1,000-1:5,000, Immunocytochemistry (IC): 1:100-1:1,000
Reactivity:	Human, Mouse, Rat
Host:	Rabbit
Isotype:	IgG
Clonality:	Monoclonal
Immunogen:	A synthesized peptide derived from human Caspase-6
Formulation:	Supplied in PBS (pH 7.4) containing 50% glycerol, and 0.02% sodium azide.
Concentration:	Lot dependent
Purification:	Affinity Purified
Conjugation:	Unconjugated
Stability:	Store at -20 °C for one year.
Database Link:	P55212
Synonyms:	Apoptotic Protease MCH-2; Apoptotic Protease Mch-2; CASP-6; CASP6; CASPASE-6; Caspase-6; Caspase 6; Caspase 6, Apoptosis-Related Cysteine Peptidase; Caspase 6, Apoptosis-Related Cysteine Protease; CSP-6; EC 3.4.22; EC 3.4.22.59; Mammalian Ced-3 Homologue 2; MCH2

[View online »](#)

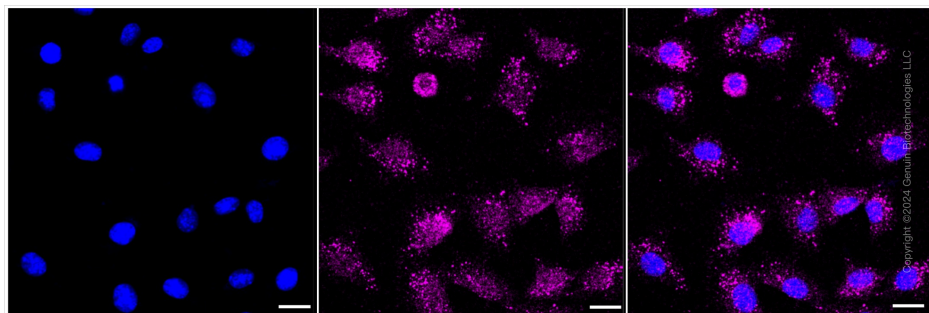
Product images:



Western blotting analysis using anti-Caspase 6 antibody . Total cell lysates (30 µg) from various cell lines were loaded and separated by SDS-PAGE. The blot was incubated with anti-Caspase 6 antibody and HRP-conjugated goat anti-rabbit secondary antibody respectively. Image was developed using anti-FeQ™ ECL Substrate Kit .



Western blotting analysis using anti-caspase 6 antibody . Caspase 6 expression in wild-type (WT) and caspase 6 (CASP6) shRNA knockdown (KD) HeLa cells with 20 µg of total cell lysates. Hsp90 α serves as a loading control. The blot was incubated with anti-caspase 6 antibody and HRP-conjugated goat anti-rabbit secondary antibody respectively. Image was developed using anti-NaQ™ ECL Substrate Kit .



Immunocytochemical staining of C2C12 cells with anti-Caspase 6 antibody . Nuclei were stained blue with DAPI; Caspase 6 was stained magenta with Alexa Fluor® 647. Images were taken using anti-Leica stellaris 5. Protein abundance based on laser Intensity and smart gain: Low. Scale bar: 20 μ m.