

Product datasheet for **TA424580**

CLSTN1 Rabbit Monoclonal Antibody [Clone ID: 23GB3725]

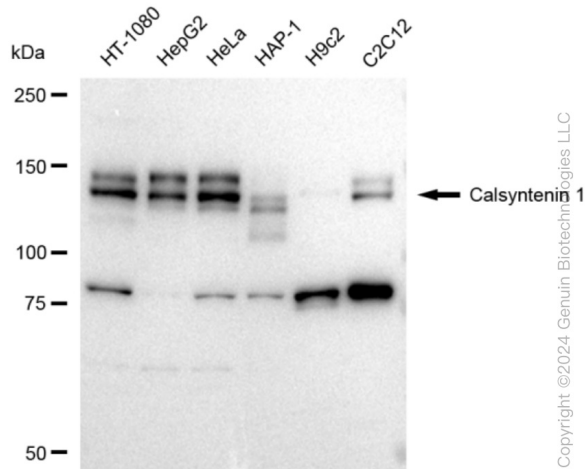
Product data:

Product Type:	Primary Antibodies
Clone Name:	23GB3725
Applications:	FC, WB
Recommended Dilution:	Western Blotting (WB): 1:1,000-1:5,000, Flow Cytometry (FCM): 1:2,000
Reactivity:	Human, Mouse, Rat
Host:	Rabbit
Isotype:	IgG
Clonality:	Monoclonal
Immunogen:	A synthesized peptide derived from human CLSTN1
Formulation:	Supplied in PBS (pH 7.4) containing 50% glycerol, and 0.02% sodium azide.
Concentration:	Lot dependent
Purification:	Affinity Purified
Conjugation:	Unconjugated
Stability:	Store at -20 °C for one year.
Database Link:	O94985
Synonyms:	ALC-ALPHA; Alc-Alpha; Alcadein-Alpha; Alcalpha1; Alcalpha2; Alzheimer-Related Cadherin-Like Protein; Cadherin-Related Family Member 12; Calsyntenin-1; Calsyntenin 1; CDHR12; CLSTN1; CS1; CST-1; CSTN1; KIAA0911; Non-Classical Cadherin XB31alpha; PIK3CD; XB31alpha

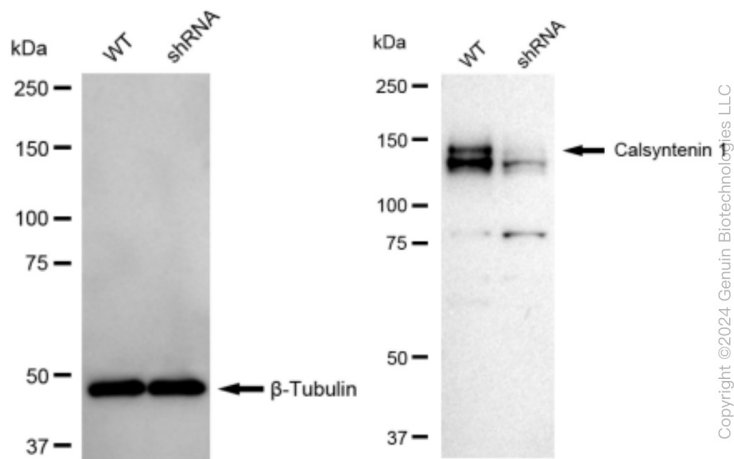


[View online »](#)

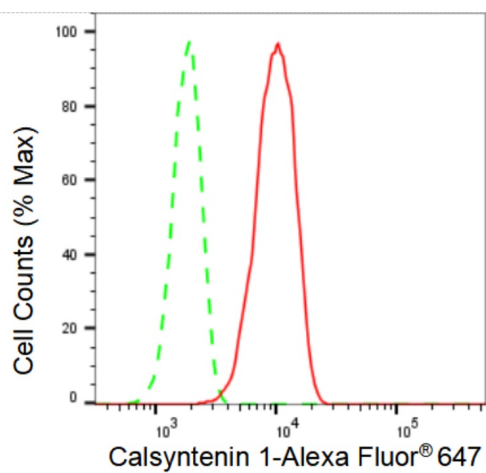
Product images:



Western blotting analysis using anti-Calsyntenin 1 antibody . Total cell lysates (30 μ g) from various cell lines were loaded and separated by SDS-PAGE. The blot was incubated with anti-Calsyntenin 1 antibody and HRP-conjugated goat anti-rabbit secondary antibody respectively. Image was developed using anti-FeQ™ ECL Substrate Kit .



Western blotting analysis using anti-Calsyntenin 1 antibody . Calsyntenin 1 expression in wild type (WT) and Calsyntenin 1 shRNA knockdown (KD) HeLa cells with 30 μ g of total cell lysates. β -Tubulin serves as a loading control. The blot was incubated with anti-Calsyntenin 1 antibody and HRP-conjugated goat anti-rabbit secondary antibody respectively. Image was developed using anti-FeQ™ ECL Substrate Kit .



Copyright ©2024 Genuin Biotechnologies LLC

Flow cytometric analysis of Calsyntenin 1 expression in HT-1080 cells using anti-Calsyntenin 1 antibody . Green, isotype control; red, Calsyntenin 1.