

## Product datasheet for **TA424549**

### **BAZ1B Rabbit Monoclonal Antibody [Clone ID: 23GB3685]**

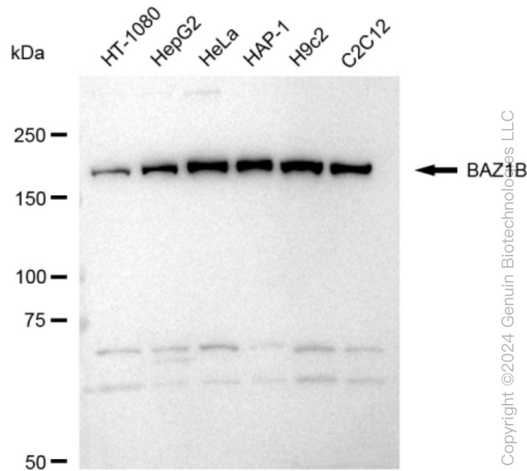
#### **Product data:**

Product Type:	Primary Antibodies
Clone Name:	23GB3685
Applications:	FC, ICC, WB
Recommended Dilution:	Western Blotting (WB): 1:1,000-1:5,000, Flow Cytometry (FCM): 1:2,000, Immunocytochemistry (IC): 1:100-1:1,000
Reactivity:	Human, Mouse, Rat
Host:	Rabbit
Isotype:	IgG
Clonality:	Monoclonal
Immunogen:	A synthesized peptide derived from human WSTF
Formulation:	Supplied in PBS (pH 7.4) containing 50% glycerol, and 0.02% sodium azide.
Concentration:	Lot dependent
Purification:	Affinity Purified
Conjugation:	Unconjugated
Stability:	Store at -20 °C for one year.
Database Link:	<a href="#">Q9UIG0</a>
Synonyms:	BAZ1B; Bromodomain Adjacent To Zinc Finger Domain 1B; Bromodomain Adjacent To Zinc Finger Domain Protein 1B; EC 2.7.10.2; HWALp2; Transcription Factor; Tyrosine-Protein Kinase BAZ1B; WBSC10; WBSCR9; WBSCR10; Williams-Beuren Syndrome Chromosomal Region 9 Protein; Williams-Beuren Syndrome Chromosomal Region 10 Protein; Williams-Beuren Syndrome Chromosome Region 9; Williams-Beuren Syndrome Chromosome Region 10; Williams Syndrome; WSTF

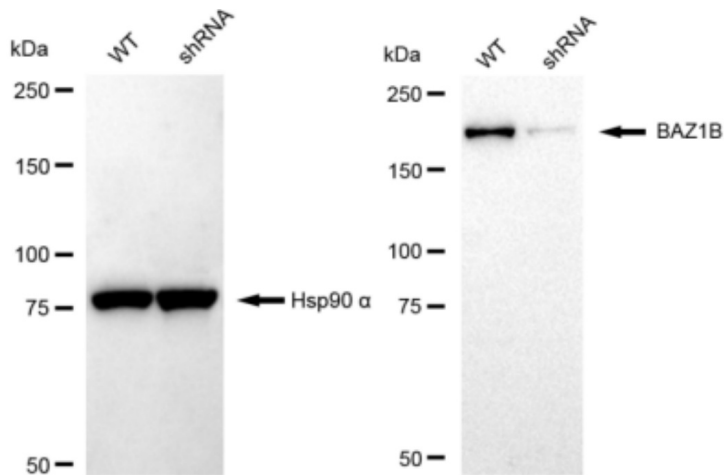


[View online »](#)

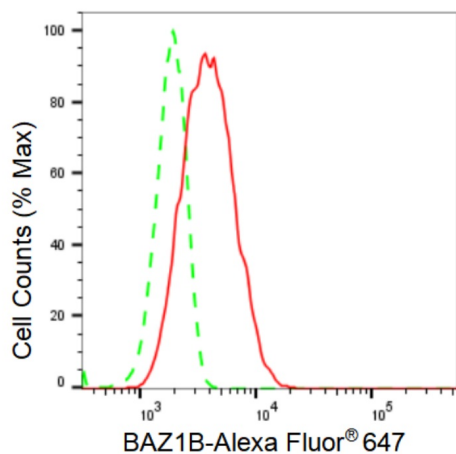
## Product images:



Western blotting analysis using anti-BAZ1B antibody . Total cell lysates (30 µg) from various cell lines were loaded and separated by SDS-PAGE. The blot was incubated with anti-BAZ1B antibody and HRP-conjugated goat anti-rabbit secondary antibody respectively. Image was developed using anti-FeQ™ ECL Substrate Kit .

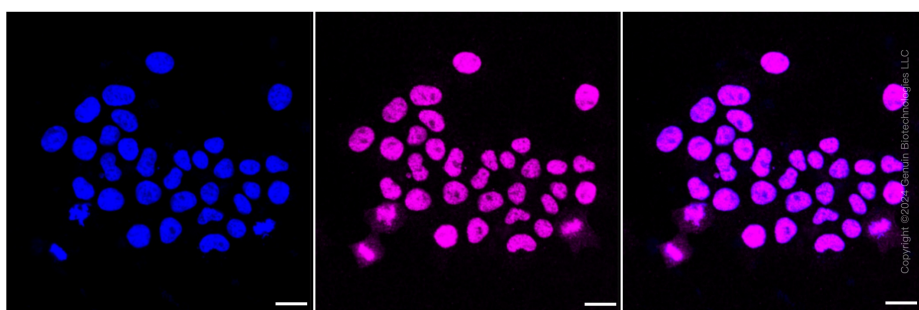


Western blotting analysis using anti-BAZ1B antibody . BAZ1B expression in wild type (WT) and BAZ1B shRNA knockdown (KD) HeLa cells with 30 µg of total cell lysates . Hsp90 α serves as a loading control. The blot was incubated with anti-BAZ1B antibody and HRP-conjugated goat anti-rabbit secondary antibody respectively. Image was developed using anti-FeQ™ ECL Substrate Kit .



Copyright ©2024 Genuin Biotechnologies LLC

Flow cytometric analysis of BAZ1B expression in HeLa cells using anti-BAZ1B antibody . Green, isotype control; red, BAZ1B.



Copyright ©2024 Genuin Biotechnologies LLC

Immunocytochemical staining of HeLa cells with BAZ1B antibody . Nuclei were stained blue with DAPI; BAZ1B was stained magenta with Alexa Fluor® 647. Images were taken using anti-Leica stellaris 5. Protein abundance based on laser Intensity and smart gain: Medium. Scale bar: 20 µm.