

## Product datasheet for **TA424514**

### **AP2M1 Rabbit Monoclonal Antibody [Clone ID: 23GB3220]**

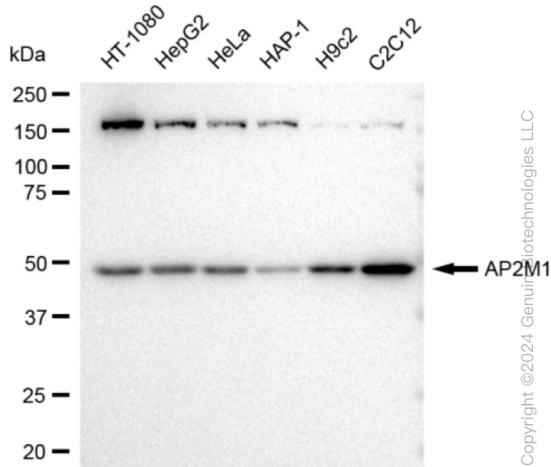
#### **Product data:**

Product Type:	Primary Antibodies
Clone Name:	23GB3220
Applications:	ICC, WB
Recommended Dilution:	Western Blotting (WB): 1:1,000-1:5,000, Immunocytochemistry (IC): 1:100-1:1,000
Reactivity:	Human, Mouse, Rat
Host:	Rabbit
Isotype:	IgG
Clonality:	Monoclonal
Immunogen:	A synthesized peptide derived from human AP2M1
Formulation:	Supplied in PBS (pH 7.4) containing 50% glycerol, and 0.02% sodium azide.
Concentration:	Lot dependent
Purification:	Affinity Purified
Conjugation:	Unconjugated
Stability:	Store at -20 °C for one year.
Database Link:	<a href="#">Q96CW1</a>
Synonyms:	Adaptin-Mu2; Adaptor-Related Protein Complex 2 Subunit Mu; Adaptor Protein Complex AP-2 Subunit Mu; Adaptor Related Protein Complex 2 Mu 1 Subunit; Adaptor Related Protein Complex 2 Subunit Mu 1; AP-2 Complex Subunit Mu; AP-2 Mu 2 Chain; AP-2 Mu Chain; AP2M1; AP50; CLAPM1; Clathrin-Associated/Assembly/Adaptor Protein, Medium 1; Clathrin Adaptor Complex AP2, Mu Subunit; Clathrin Assembly Protein Complex 2 Medium Chain; Clathrin Assembly Protein Complex 2 Mu Medium Chain; Clathrin Coat-Associated Protein AP50; Clathrin Coat Adaptor Protein AP50; Clathrin Coat Assembly Protein AP50; HA2 50 KDa Subunit; HA2 50 KDa Subunit; KIAA0109; MRD60; MU2; Mu2; Plasma Membrane Adaptor AP-2 50 KDa Protein; Plasma Membrane Adaptor AP-2 50kDa Protein

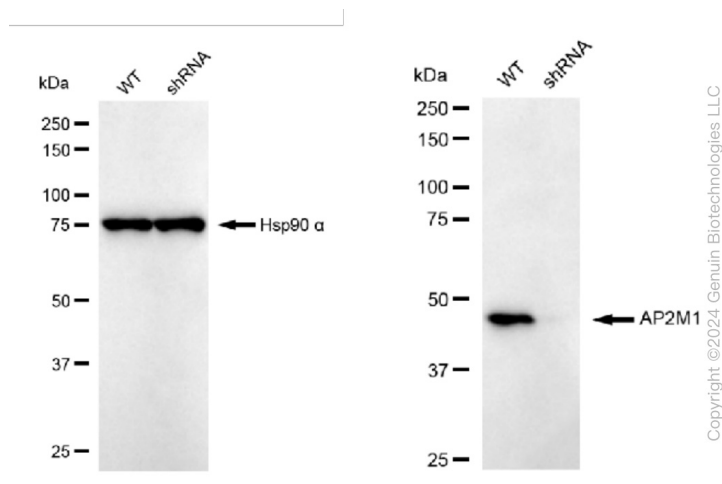


[View online »](#)

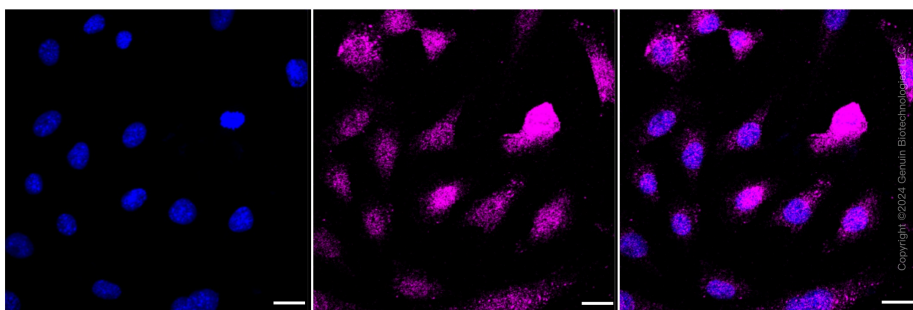
## Product images:



Western blotting analysis using anti-AP2M1 antibody . Total cell lysates (30 µg) from various cell lines were loaded and separated by SDS-PAGE. The blot was incubated with anti-AP2M1 antibody and HRP-conjugated goat anti-rabbit secondary antibody respectively. Image was developed using anti-FeQ™ ECL Substrate Kit .



Western blotting analysis using anti-AP2M1 antibody . AP2M1 expression in wild type (WT) and AP2M1 shRNA knockdown (KD) HeLa cells with 30 µg of total cell lysates . Hsp90 α serves as a loading control. The blot was incubated with anti-AP2M1 antibody and HRP-conjugated goat anti-rabbit secondary antibody respectively. Image was developed using anti-FeQ™ ECL Substrate Kit .



Immunocytochemical staining of C2C12 cells with AP2M1 antibody . Nuclei were stained blue with DAPI; AP2M1 was stained magenta with Alexa Fluor® 647. Images were taken using anti-Leica stellaris 5. Protein abundance based on laser intensity and smart gain: Low. Scale bar: 20 µm.