

Product datasheet for **TA424501**

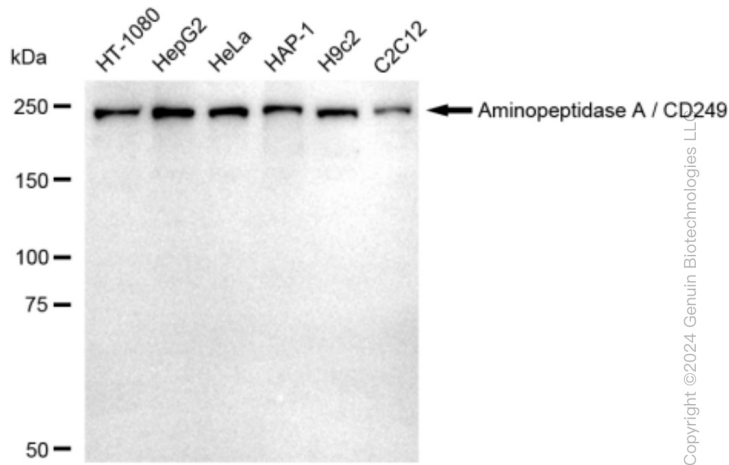
ENPEP Rabbit Monoclonal Antibody [Clone ID: 23GB5325]

Product data:

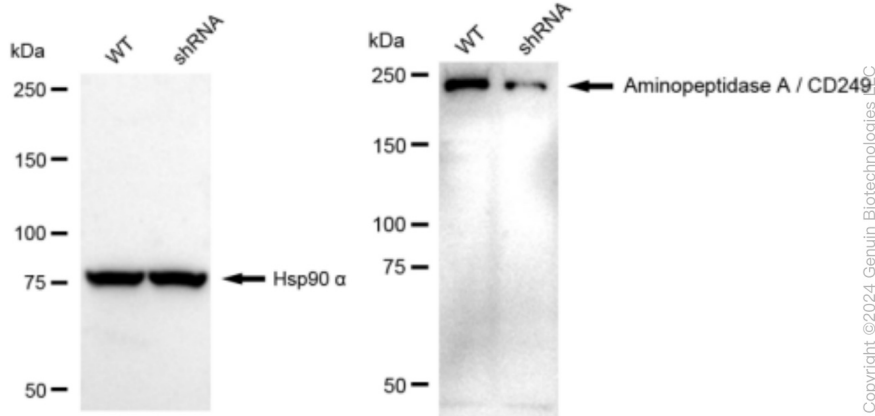
Product Type:	Primary Antibodies
Clone Name:	23GB5325
Applications:	ICC, WB
Recommended Dilution:	Western Blotting (WB): 1:1,000-1:5,000, Immunocytochemistry (IC): 1:100-1:1,000
Reactivity:	Human, Mouse, Rat
Host:	Rabbit
Isotype:	IgG
Clonality:	Monoclonal
Immunogen:	A synthesized peptide derived from human Aminopeptidase A / CD249
Formulation:	Supplied in PBS (pH 7.4) containing 50% glycerol, and 0.02% sodium azide.
Concentration:	Lot dependent
Purification:	Affinity Purified
Conjugation:	Unconjugated
Stability:	Store at -20 °C for one year.
Database Link:	Q07075
Synonyms:	Aminopeptidase A; AP-A; APA; CD249; CD249 Antigen; Differentiation Antigen Gp160; EAP; EC 3.4.11; EC 3.4.11.7; ENPEP; Glutamyl Aminopeptidase; Glutamyl Aminopeptidase (Aminopeptidase A); GP160; Gp160

[View online »](#)

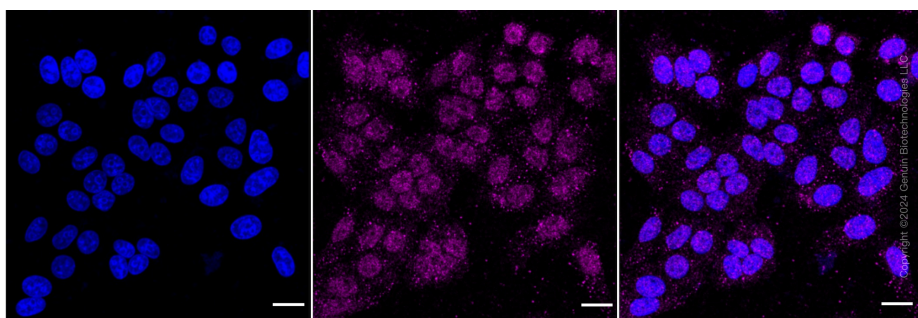
Product images:



Western blotting analysis using anti-Aminopeptidase A / CD249 antibody . Total cell lysates (30 µg) from various cell lines were loaded and separated by SDS-PAGE. The blot was incubated with anti-Aminopeptidase A / CD249 antibody and HRP-conjugated goat anti-rabbit secondary antibody respectively. Image was developed using anti-FeQ™ ECL Substrate Kit .



Western blotting analysis using anti-Aminopeptidase A / CD249 antibody . Aminopeptidase A / CD249 expression in wild type (WT) and Aminopeptidase A / CD249 shRNA knockdown (KD) HeLa cells with 30 µg of total cell lysates. Hsp90 α serves as a loading control. The blot was incubated with anti-Aminopeptidase A / CD249 antibody and HRP-conjugated goat anti-rabbit secondary antibody respectively. Image was developed using anti-FeQ™ ECL Substrate Kit .



Immunocytochemical staining of HepG2 cells with anti-aminopeptidase A / CD249 antibody . Nuclei were stained blue with DAPI; Aminopeptidase A / CD249 was stained magenta with Alexa Fluor® 647. Images were taken using anti-Leica stellaris 5. Protein abundance based on laser Intensity and smart gain: Medium. Scale bar: 20 μ m.