

## Product datasheet for TA424496

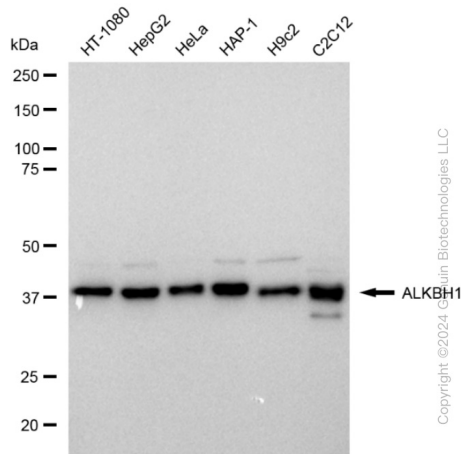
### ALKBH1 Rabbit Monoclonal Antibody [Clone ID: 23GB1385]

#### Product data:

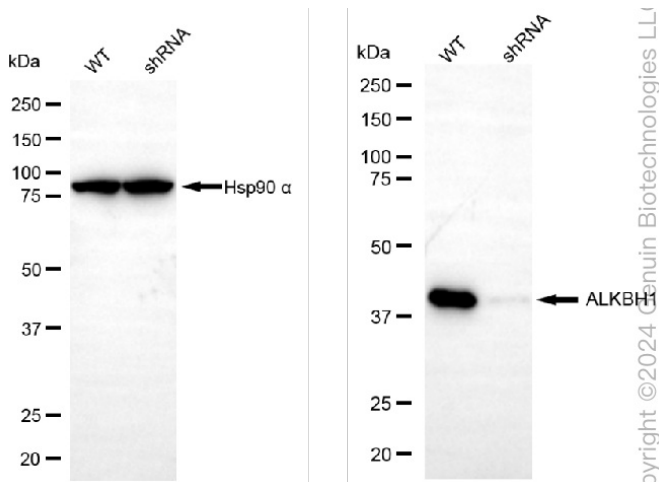
Product Type:	Primary Antibodies
Clone Name:	23GB1385
Applications:	ICC, WB
Recommended Dilution:	Western Blotting (WB): 1:1,000-1:5,000, Immunocytochemistry (IC): 1:100-1:1,000
Reactivity:	Human, Mouse, Rat
Host:	Rabbit
Isotype:	IgG
Clonality:	Monoclonal
Immunogen:	A synthesized peptide derived from ALKBH1
Formulation:	Supplied in PBS (pH 7.4) containing 50% glycerol, and 0.02% sodium azide.
Concentration:	Lot dependent
Purification:	Affinity Purified
Conjugation:	Unconjugated
Stability:	Store at -20 °C for one year.
Database Link:	<a href="#">Q13686</a>
Synonyms:	ABH; ABH1; ALKB; AlkB; AlkB, Alkylation Repair Homolog (E. Coli); AlkB, Alkylation Repair Homolog 1; AlkB, Alkylation Repair Homolog 1 (E. Coli); ALKBH; ALKBH1; AlkB Homolog 1, Histone H2A Dioxygenase; Alkylated DNA Repair Protein AlkB Homolog 1; Alkylation Repair, AlkB Homolog; Alpha-Ketoglutarate-Dependent Dioxygenase ABH1; DNA 6mA Demethylase; DNA Demethylase ALKBH1; DNA Lyase ABH1; DNA N6-Methyl Adenine Demethylase ALKBH1; DNA Oxidative Demethylase ALKBH1; EC 1.14.11.-; EC 1.14.11.33; EC 1.14.11.51; EC 4.2.99.18; HABH; MRNA N(3)-Methylcytidine Demethylase; Nucleic Acid Dioxygenase ALKBH1; TRNA N1-Methyl Adenine Demethylase


[View online »](#)

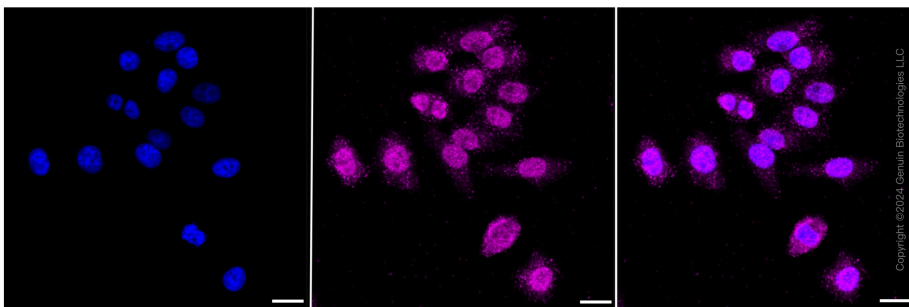
## Product images:



Western blotting analysis using anti-ALKBH1 antibody . Total cell lysates (30 µg) from various cell lines were loaded and separated by SDS-PAGE. The blot was incubated with anti-ALKBH1 antibody and HRP-conjugated goat anti-rabbit secondary antibody respectively. Image was developed using anti-FeQ™ ECL Substrate Kit .



Western blotting analysis using anti-ALKBH1 antibody . ALKBH1 expression in wild type (WT) and ALKBH1 shRNA knockdown (KD) HeLa cells with 30 µg of total cell lysates . Hsp90 α serves as a loading control. The blot was incubated with anti-ALKBH1 antibody and HRP-conjugated goat anti-rabbit secondary antibody respectively. Image was developed using anti-FeQ™ ECL Substrate Kit .



Immunocytochemical staining of HepG2 cells with ALKBH1 antibody . Nuclei were stained blue with DAPI; ALKBH1 was stained magenta with Alexa Fluor® 647. Images were taken using anti-Leica stellaris 5. Protein abundance based on laser Intensity and smart gain: medium. Scale bar: 20 µm.