

Product datasheet for **TA424494S**

ALDOA Rabbit Monoclonal Antibody [Clone ID: 24GB4710]

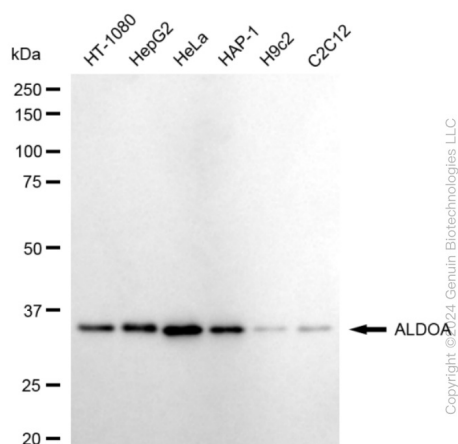
Product data:

Product Type:	Primary Antibodies
Clone Name:	24GB4710
Applications:	WB
Recommended Dilution:	Western Blotting (WB): 1:1,000-1:5,000
Reactivity:	Human, Mouse, Rat
Host:	Rabbit
Isotype:	IgG
Clonality:	Monoclonal
Immunogen:	A synthesized peptide derived from human Aldolase
Formulation:	Supplied in PBS (pH 7.4) containing 50% glycerol, and 0.02% sodium azide.
Concentration:	Lot dependent
Purification:	Affinity Purified
Conjugation:	Unconjugated
Stability:	Store at -20 °C for one year.
Database Link:	P04075
Synonyms:	ALDA; ALDOA; Aldolase, Fructose-Bisphosphate A; Aldolase A, Fructose-Bisphosphate; EC 4.1.2.13; Epididymis Secretory Sperm Binding Protein Li 87p; Fructose-1,6-Bisphosphate Triosephosphate-Lyase; Fructose-Bisphosphate Aldolase A; GSD12; HEL-S-87p; Lung Cancer Antigen NY-LU-1; Muscle-Type Aldolase

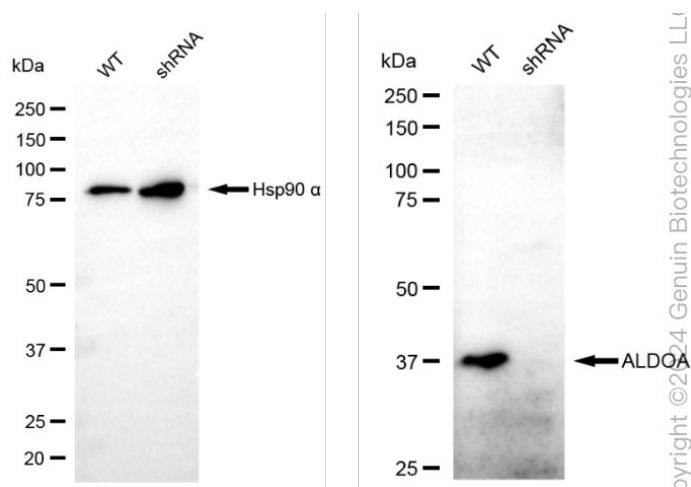


[View online »](#)

Product images:



Western blotting analysis using anti-ALDOA antibody . Total cell lysates (30 µg) from various cell lines were loaded and separated by SDS-PAGE. The blot was incubated with anti-ALDOA antibody and HRP-conjugated goat anti-rabbit secondary antibody respectively. Image was developed using anti-FeQ™ ECL Substrate Kit .



Western blotting analysis using anti-ALDOA antibody . ALDOA expression in wild-type (WT) and ALDOA shRNA knockdown (KD) HeLa cells with 20 µg of total cell lysates. Hsp90 α serves as a loading control. The blot was incubated with anti-ALDOA antibody and HRP-conjugated goat anti-rabbit secondary antibody respectively. Image was developed using anti-NaQ™ ECL Substrate Kit .