

## Product datasheet for **TA424482S**

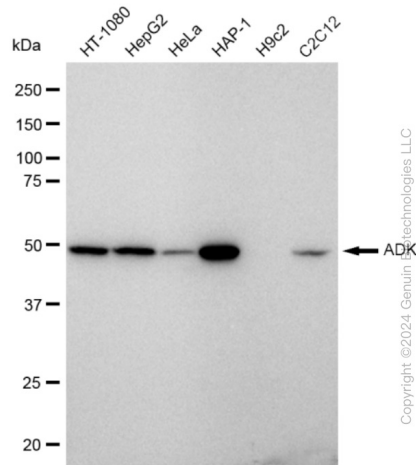
### ADK Rabbit Monoclonal Antibody [Clone ID: 23GB625]

#### Product data:

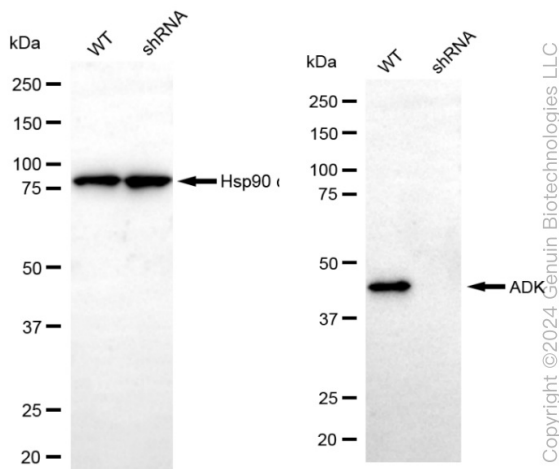
|                       |  |
|-----------------------|--|
| Product Type:         | Primary Antibodies   |
| Clone Name:           | 23GB625  |
| Applications:         | ICC, WB  |
| Recommended Dilution: | Western Blotting (WB): 1:1,000-1:5,000, Immunocytochemistry (IC): 1:100-1:1,000                                    |
| Reactivity:           | Human, Mouse   |
| Host:                 | Rabbit   |
| Isotype:              | IgG  |
| Clonality:            | Monoclonal   |
| Immunogen:            | A synthesized peptide derived from human ADK   |
| Formulation:          | Supplied in PBS (pH 7.4) containing 50% glycerol, and 0.02% sodium azide.  |
| Concentration:        | Lot dependent  |
| Purification:         | Affinity Purified  |
| Conjugation:          | Unconjugated   |
| Stability:            | Store at -20 °C for one year.  |
| Database Link:        | <a href="#">P55263</a>   |
| Synonyms:             | Adenosine 5'-Phosphotransferase; Adenosine Kinase; ADK; AK; EC 2.7.1; EC 2.7.1.20; Testicular Tissue Protein Li 14 |

[View online »](#)

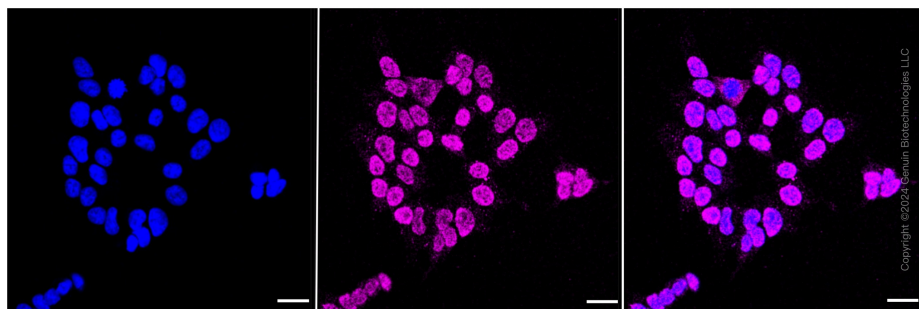
## Product images:



Western blotting analysis using anti-ADK antibody . Total cell lysates (30 µg) from various cell lines were loaded and separated by SDS-PAGE. The blot was incubated with anti-ADK antibody and HRP-conjugated goat anti rabbit secondary antibody respectively. Image was developed using anti-FeQ™ ECL Substrate Kit .



Western blotting analysis using anti-ADK antibody . ADK expression in wild type (WT) and ADK shRNA knockdown (KD) HeLa cells with 30 µg of total cell lysates .  $\beta$ -Tubulin serves as a loading control. The blot was incubated with anti-ADK antibody and HRP-conjugated goat anti rabbit secondary antibody respectively. Image was developed using anti-FeQ™ ECL Substrate Kit .



Immunocytochemical staining of HAP-1 cells with ADK antibody . Nuclei were stained blue with DAPI; ADK was stained magenta with Alexa Fluor® 647. Images were taken using anti-Leica stellaris 5. Protein abundance based on laser Intensity and smart gain: Medium. Scale bar: 20  $\mu$ m.