

## Product datasheet for **TA424481**

### **ADIPOR1 Rabbit Monoclonal Antibody [Clone ID: 23GB3150]**

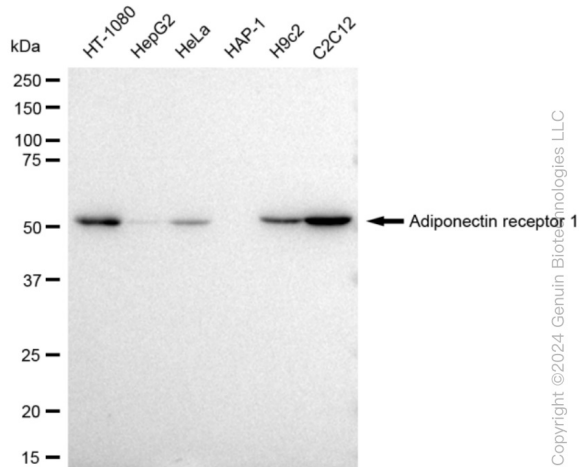
#### **Product data:**

Product Type:	Primary Antibodies
Clone Name:	23GB3150
Applications:	FC, ICC, WB
Recommended Dilution:	Western Blotting (WB): 1:1,000-1:5,000, Flow Cytometry (FCM): 1:2,000, Immunocytochemistry (IC): 1:100-1:1,000
Reactivity:	Human, Mouse, Rat
Host:	Rabbit
Isotype:	IgG
Clonality:	Monoclonal
Immunogen:	A synthesized peptide derived from human ADIPOR1
Formulation:	Supplied in PBS (pH 7.4) containing 50% glycerol, and 0.02% sodium azide.
Concentration:	Lot dependent
Purification:	Affinity Purified
Conjugation:	Unconjugated
Stability:	Store at -20 °C for one year.
Database Link:	<a href="#">Q96A54</a>
Synonyms:	ACDCR1; Adiponectin Receptor 1; Adiponectin Receptor Protein 1; ADIPOR1; CGI-45; CGI45; PAQR1; Progestin And AdipoQ Receptor Family Member 1; Progestin And AdipoQ Receptor Family Member I; TESBP1A

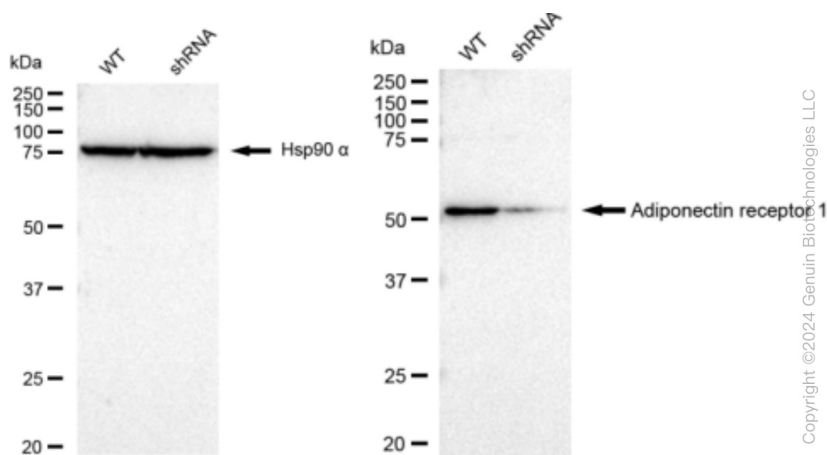


[View online »](#)

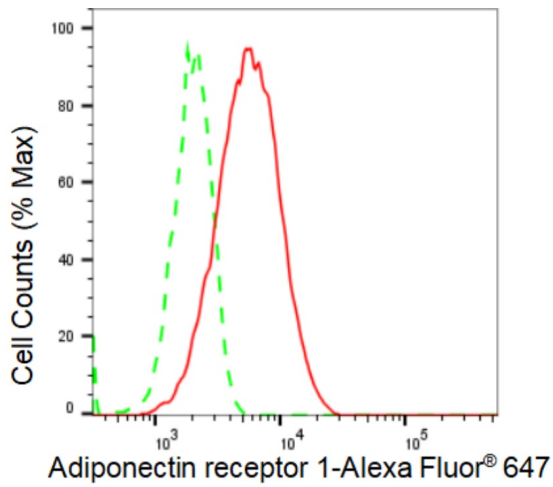
## Product images:



Western blotting analysis using anti-Adiponectin receptor 1 antibody . Total cell lysates (30 µg) from various cell lines were loaded and separated by SDS-PAGE. The blot was incubated with anti-Adiponectin receptor 1 antibody and HRP-conjugated goat anti-rabbit secondary antibody respectively. Image was developed using anti-FeQ™ ECL Substrate Kit .

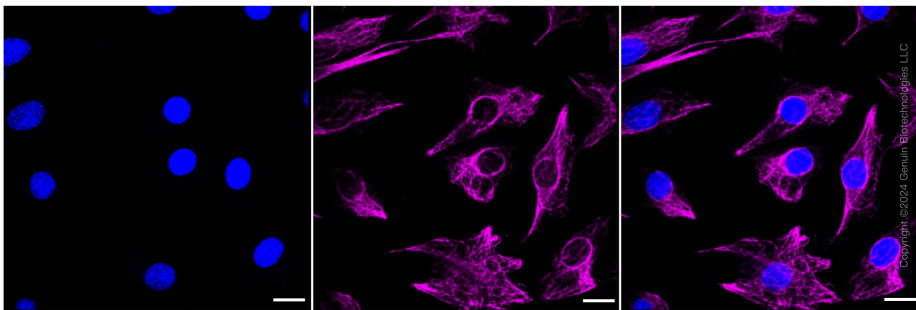


Western blotting analysis using anti-Adiponectin receptor 1 antibody . Adiponectin receptor 1 expression in wild type (WT) and Adiponectin receptor 1 shRNA knockdown (KD) HeLa cells with 30 µg of total cell lysates . Hsp90 α serves as a loading control. The blot was incubated with anti-Adiponectin receptor 1 antibody and HRP-conjugated goat anti-rabbit secondary antibody respectively. Image was developed using anti-FeQ™ ECL Substrate Kit .



Copyright ©2024 Genuin Biotechnologies LLC

Flow cytometric analysis of Adiponectin receptor 1 expression in C2C12 cells using anti-Adiponectin receptor 1 antibody. Green, isotype control; red, Adiponectin receptor 1.



Immunocytochemical staining of C2C12 cells with Adiponectin receptor 1 antibody. Nuclei were stained blue with DAPI; Adiponectin receptor 1 was stained magenta with Alexa Fluor® 647. Images were taken using anti-Leica stellaris 5. Protein abundance based on laser Intensity and smart gain: High. Scale bar: 20 µm.