

Product datasheet for **TA424472**

ACAA2 Rabbit Monoclonal Antibody [Clone ID: 23GB2955]

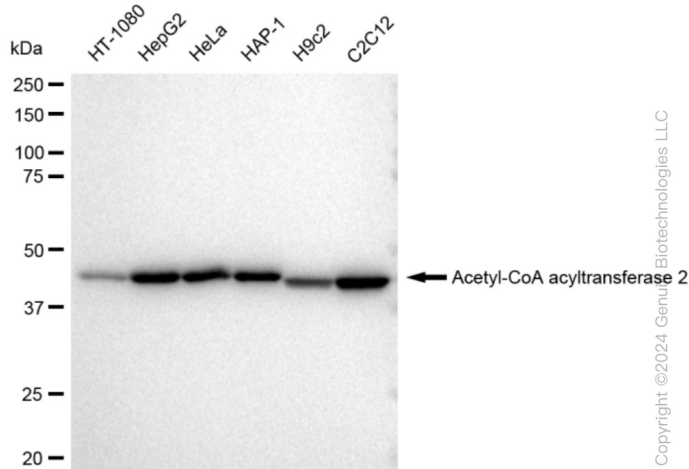
Product data:

Product Type:	Primary Antibodies
Clone Name:	23GB2955
Applications:	FC, ICC, WB
Recommended Dilution:	Western Blotting (WB): 1:1,000-1:5,000, Flow Cytometry (FCM): 1:2,000, Immunocytochemistry (IC): 1:100-1:1,000
Reactivity:	Human, Mouse, Rat
Host:	Rabbit
Isotype:	IgG
Clonality:	Monoclonal
Immunogen:	A synthesized peptide derived from human ACAA2
Formulation:	Supplied in PBS (pH 7.4) containing 50% glycerol, and 0.02% sodium azide.
Concentration:	Lot dependent
Purification:	Affinity Purified
Conjugation:	Unconjugated
Stability:	Store at -20 °C for one year.
Database Link:	P42765
Synonyms:	3-Ketoacyl-CoA Thiolase, Mitochondrial; ACAA2; Acetyl-CoA Acetyltransferase; Acetyl-CoA Acyltransferase; Acetyl-CoA Acyltransferase 2; Acetyl-Coenzyme A Acyltransferase 2; Acyl-CoA Hydrolase, Mitochondrial; Beta-Ketothiolase; Beta Ketothiolase; DSAEC 2; EC 2.3.1; EC 2.3.1.9; EC 2.3.1.16; EC 3.1.2.-; EC 3.1.2.1; EC 3.1.2.2; Mitochondrial 3-Oxoacyl-CoA Thiolase; Mitochondrial 3-Oxoacyl-Coenzyme A Thiolase 2; T1

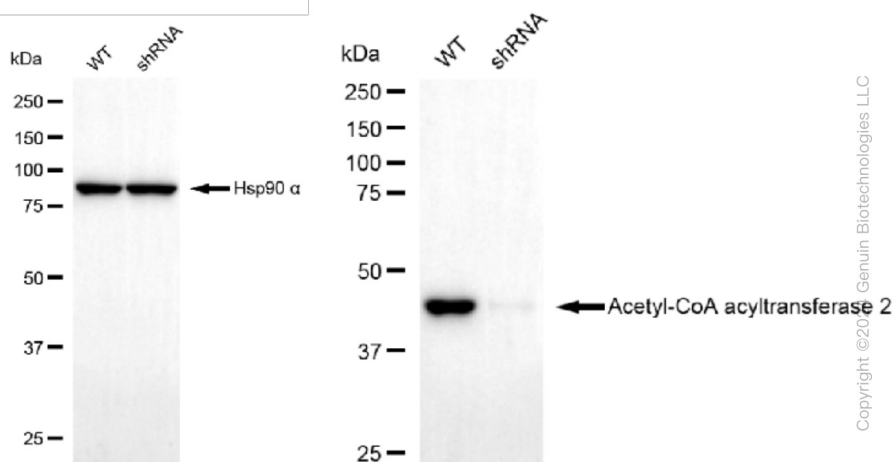


[View online »](#)

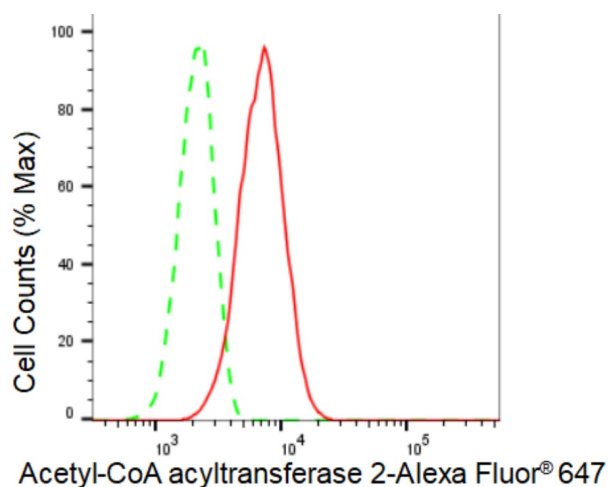
Product images:



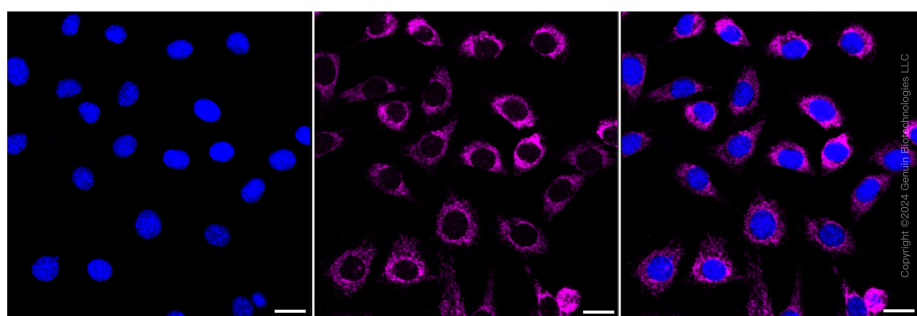
Western blotting analysis using anti-Acetyl-CoA acyltransferase 2 antibody . Total cell lysates (30 µg) from various cell lines were loaded and separated by SDS-PAGE. The blot was incubated with anti-Acetyl-CoA acyltransferase 2 antibody and HRP-conjugated goat anti-rabbit secondary antibody respectively. Image was developed using anti-FeQ™ ECL Substrate Kit .



Western blotting analysis using anti-Acetyl-CoA acyltransferase 2 antibody . Acetyl-CoA acyltransferase 2 expression in wild type (WT) and Acetyl-CoA acyltransferase 2 shRNA knockdown (KD) HeLa cells with 30 µg of total cell lysates . Hsp90 α serves as a loading control. The blot was incubated with anti-Acetyl-CoA acyltransferase 2 antibody and HRP-conjugated goat anti-rabbit secondary antibody respectively. Image was developed using anti-FeQ™ ECL Substrate Kit .



Flow cytometric analysis of Acetyl-CoA acyltransferase 2 expression in C2C12 cells using anti-Acetyl-CoA acyltransferase 2 antibody . Green, isotype control; red, Acetyl-CoA acyltransferase 2.



Immunocytochemical staining of C2C12 cells with Acetyl-CoA acyltransferase 2 antibody . Nuclei were stained blue with DAPI; Acetyl-CoA acyltransferase 2 was stained magenta with Alexa Fluor® 647. Images were taken using anti-Leica stellaris 5. Protein abundance based on laser Intensity and smart gain: High. Scale bar: 20 µm.