

## Product datasheet for **TA424469**

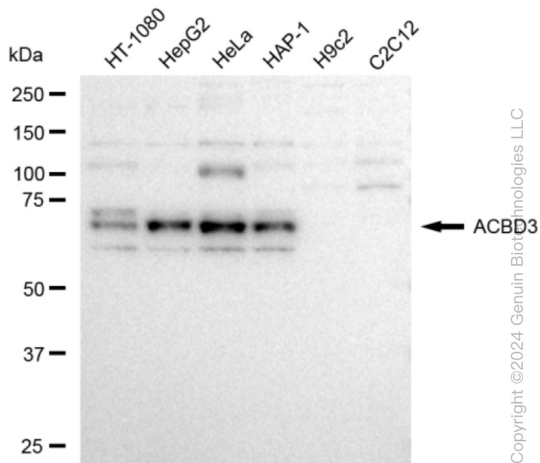
### ACBD3 Rabbit Monoclonal Antibody [Clone ID: 23GB3620]

#### Product data:

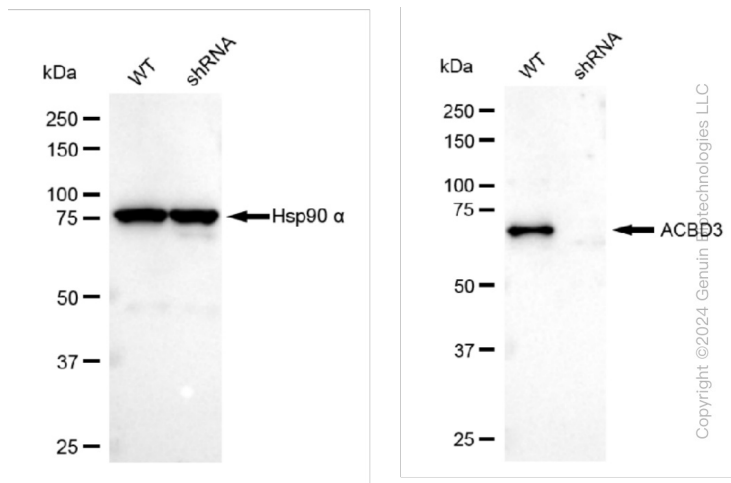
Product Type:	Primary Antibodies
Clone Name:	23GB3620
Applications:	FC, ICC, WB
Recommended Dilution:	Western Blotting (WB): 1:1,000-1:5,000, Flow Cytometry (FCM): 1:2,000, Immunocytochemistry (IC): 1:100-1:1,000
Reactivity:	Human
Host:	Rabbit
Isotype:	IgG
Clonality:	Monoclonal
Immunogen:	A synthesized peptide derived from human ACBD3
Formulation:	Supplied in PBS (pH 7.4) containing 50% glycerol, and 0.02% sodium azide.
Concentration:	Lot dependent
Purification:	Affinity Purified
Conjugation:	Unconjugated
Stability:	Store at -20 °C for one year.
Database Link:	<a href="#">Q9H3P7</a>
Synonyms:	ACBD3; Acyl-CoA-Binding Domain-Containing Protein; Acyl-CoA Binding Domain Containing 3; Acyl-Coenzyme A Binding Domain Containing 3; GCP60; GOCAP1; Golgi Complex-Associated Protein 1; Golgi Complex Associated Protein 1, 60kDa; Golgi Phosphoprotein 1; Golgi Resident Protein GCP60; GOLPH1; PAP7; PBR- And PKA-Associated Protein 7; Peripheral Benzodiazepine Receptor-Associated Protein PAP7; PKA (RIalpha)-Associated Protein

[View online »](#)

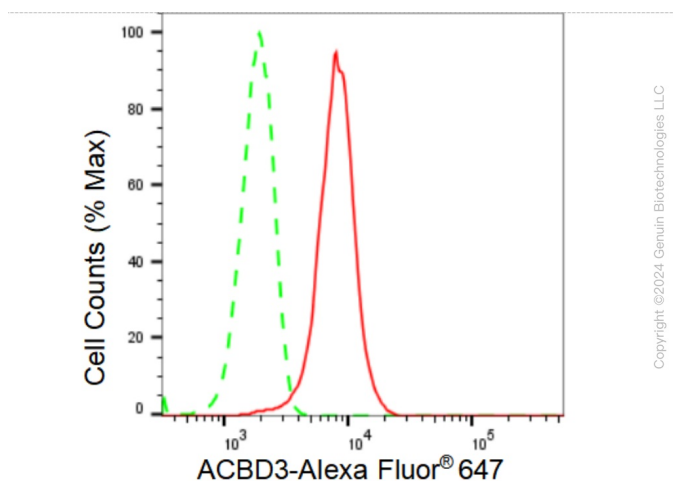
## Product images:



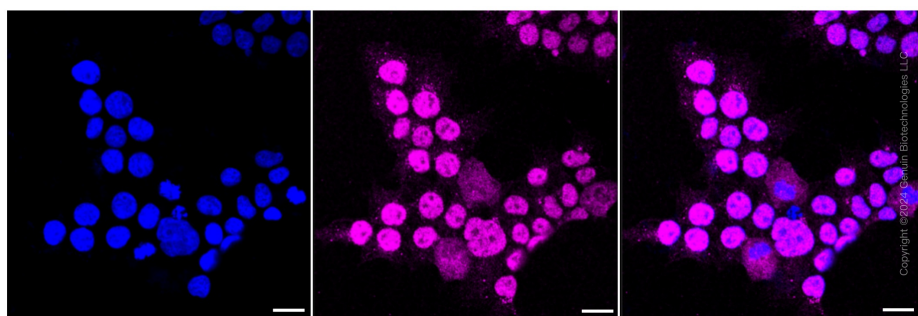
Western blotting analysis using anti-ACBD3 antibody . Total cell lysates (30 µg) from various cell lines were loaded and separated by SDS-PAGE. The blot was incubated with anti-ACBD3 antibody and HRP-conjugated goat anti-rabbit secondary antibody respectively. Image was developed using anti-FeQ™ ECL Substrate Kit .



Western blotting analysis using anti-ACBD3 antibody . ACBD3 expression in wild type (WT) and ACBD3 shRNA knockdown (KD) HeLa cells with 30 µg of total cell lysates . β-Tubulin serves as a loading control. The blot was incubated with anti-ACBD3 antibody and HRP-conjugated goat anti-rabbit secondary antibody respectively. Image was developed using anti-FeQ™ ECL Substrate Kit .



Flow cytometric analysis of ACBD3 expression in HeLa cells using anti-ACBD3 antibody . Green, isotype control; red, ACBD3.



Immunocytochemical staining of HeLa cells with ACBD3 antibody . Nuclei were stained blue with DAPI; ACBD3 was stained magenta with Alexa Fluor® 647. Images were taken using anti-Leica stellaris 5. Protein abundance based on laser Intensity and smart gain: Medium. Scale bar: 20  $\mu$ m.