

Product datasheet for TA424454

PCNA Rabbit Monoclonal Antibody [Clone ID: OTIRA2273]

Product data:

Product Type:	Primary Antibodies
Clone Name:	OTIRA2273
Applications:	FC, ICC/IF, IHC, IP, WB
Recommended Dilution:	WB 1:3000~1:10000 IHC 1:50~1:200 ICC/IF 1:100~1:500 IP 1:50~1:100 FC 1:200~1:500
Reactivity:	Human, Mouse, Rat
Host:	Rabbit
Isotype:	IgG
Clonality:	Monoclonal
Immunogen:	A synthesized peptide derived from human PCNA
Specificity:	PCNA Antibody detects endogenous levels of total PCNA
Formulation:	Rabbit IgG in 10mM phosphate buffered saline , pH 7.4, 150mM sodium chloride, 0.05% BSA, 0.02% sodium azide and 50% glycerol.
Concentration:	lot specific
Purification:	Affinity-chromatography
Conjugation:	Unconjugated
Storage:	Store at +4°C short term. Store at -21°C long term. Avoid freeze / thaw cycle.
Predicted Protein Size:	29kDa
Gene Name:	proliferating cell nuclear antigen
Database Link:	Entrez Gene 5111 Human P12004

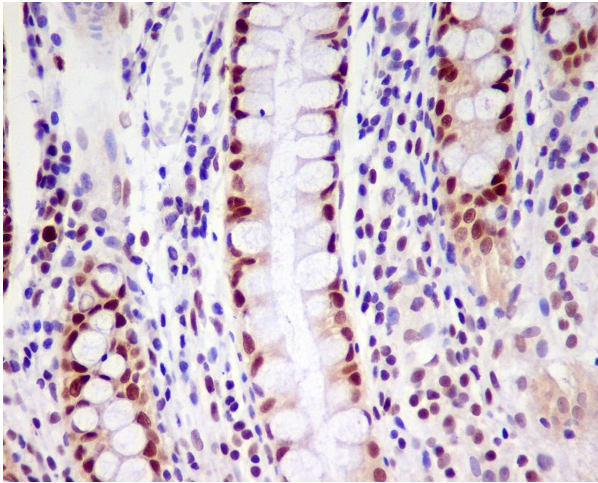


Background:

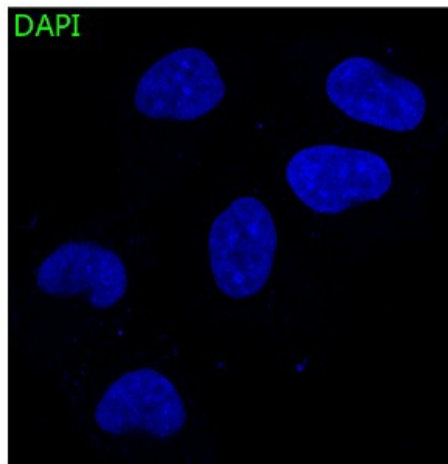
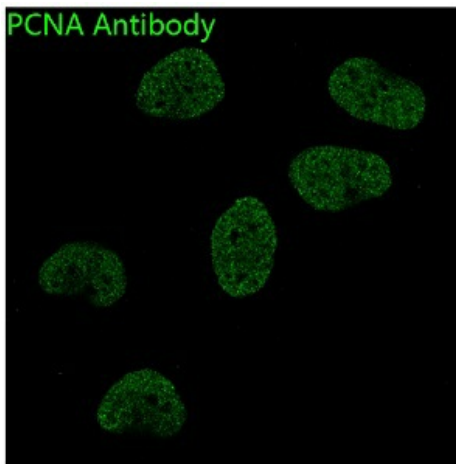
PCNA This protein is an auxiliary protein of DNA polymerase delta and is involved in the control of eukaryotic DNA replication by increasing the polymerase's processibility during elongation of the leading strand. Belongs to the PCNA family. Homotrimer. Forms a complex with activator 1 heteropentamer in the presence of ATP.

Synonyms:

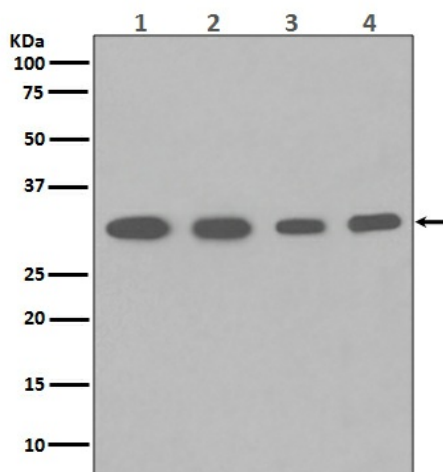
Cyclin; DNA polymerase delta auxiliary protein; MGC8367; PCNA; Proliferating cell nuclear antigen

Product images:

Immunohistochemical analysis of paraffin-embedded human colon, using PCNA Antibody.



Immunofluorescent analysis of HeLa cells, using PCNA Antibody.



Western blot analysis of PCNA expression in (1) Hela cell lysate; (2) HepG2 whole cell lysate; (3) U937 whole cell lysate; (4) Mouse spleen lysate with PCNA Antibody.