

Product datasheet for **TA424448**

Rabbit Monoclonal Antibody

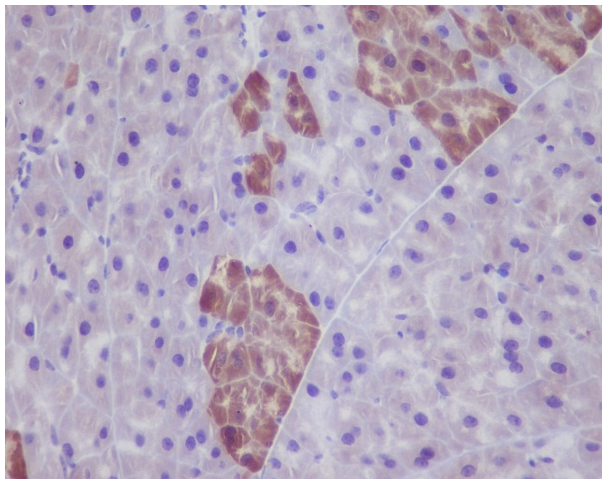
Product data:

Product Type:	Primary Antibodies
Applications:	ICC/IF, IHC, WB
Recommended Dilution:	WB 1:5000~1:10000 IHC 1:100~1:200 ICC/IF 1:100~1:1000
Reactivity:	All Species
Host:	Rabbit
Isotype:	IgG
Clonality:	Monoclonal
Immunogen:	A synthesized peptide derived from green fluorescent protein
Specificity:	GFP antibody detects endogenous levels of C-terminal, internal, and N-terminal GFP-tagged proteins.
Formulation:	Rabbit IgG in phosphate buffered saline , pH 7.4, 150mM NaCl, 0.02% sodium azide and 50% glycerol.
Concentration:	lot specific
Purification:	Affinity-chromatography
Conjugation:	Unconjugated
Storage:	Store at +4°C short term. Store at -23°C long term. Avoid freeze / thaw cycle.
Predicted Protein Size:	27kDa
Database Link:	Q963I9
Background:	Green fluorescent protein(GFP) has been engineered to produce a vast number of variously colored mutants, fusion proteins, and biosensors. Fluorescent proteins and its mutated allelic forms, blue, cyan and yellow have become a useful and ubiquitous tool for making chimeric proteins, where they function as a fluorescent protein tag. Typically they tolerate N- and C-terminal fusion to a broad variety of proteins.
Synonyms:	GFP; Green fluorescent protein; yfp

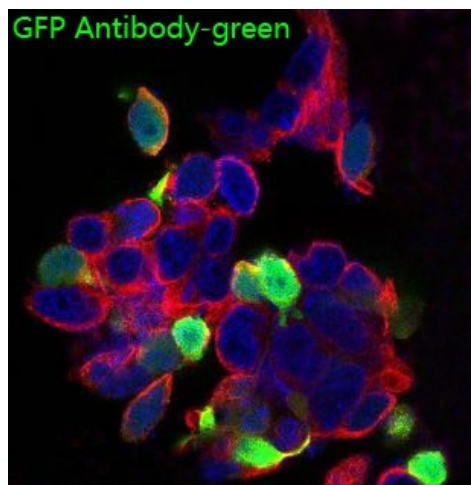


[View online »](#)

Product images:



Immunohistochemical analysis of paraffin-embedded GFP transgenic mouse liver, using GFP Antibody.



Immunofluorescent analysis of 293 cells, using GFP Antibody .