

Product datasheet for **TA424446**

GAPDH Rabbit Monoclonal Antibody [Clone ID: OTIRA2265]

Product data:

Product Type:	Primary Antibodies
Clone Name:	OTIRA2265
Applications:	FC, ICC, ICC/IF, IHC, IP, WB
Recommended Dilution:	WB:1/10000-20000;IHC:1/100-500;ICC/IF:1/100-500;IP:1/50-100;FC:1/100-500
Reactivity:	Human, Mouse, Rat, Zebrafish, Fish
Host:	Rabbit
Isotype:	IgG
Clonality:	Monoclonal
Immunogen:	A synthesized peptide derived from human GAPDH
Specificity:	GAPDH Antibody detects endogenous levels of total GAPDH
Formulation:	Rabbit IgG in 10mM phosphate buffered saline , pH 7.4, 150mM sodium chloride, 0.05% BSA, 0.02% sodium azide and 50% glycerol.
Concentration:	lot specific
Purification:	Affinity-chromatography
Conjugation:	Unconjugated
Storage:	Store at +4°C short term. Store at -22°C long term. Avoid freeze / thaw cycle.
Predicted Protein Size:	36kDa
Gene Name:	glyceraldehyde-3-phosphate dehydrogenase
Database Link:	Entrez Gene 2597 Human P04406



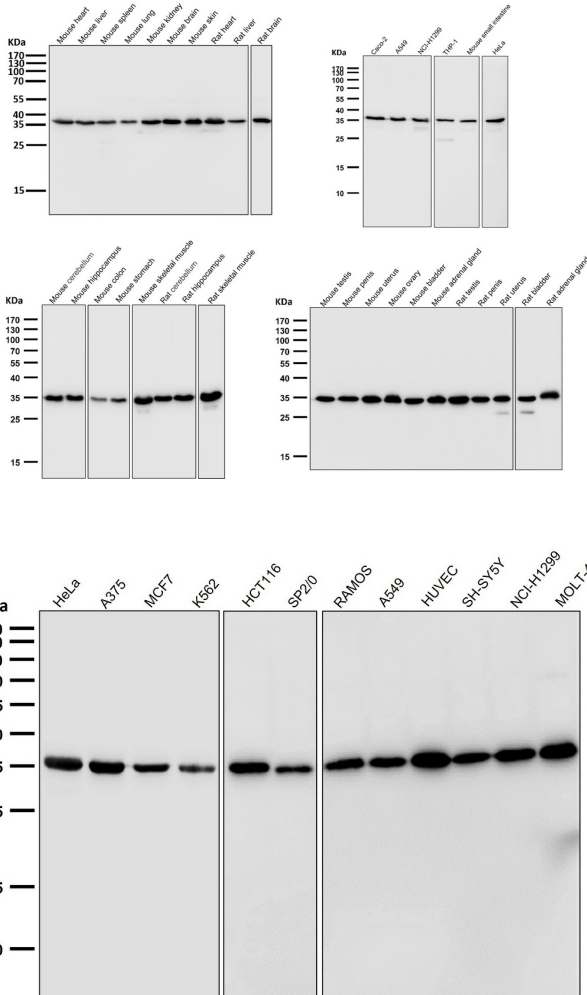
Background:

Glyceraldehyde 3 phosphate dehydrogenase (GAPDH) is well known as one of the key enzymes involved in glycolysis. GAPDH is constitutively abundant expressed in almost cell types at high levels, therefore antibodies against GAPDH are useful as loading controls for Western Blotting. Some pathology factors, such as hypoxia and diabetes, increased or decreased GAPDH expression in certain cell types.

Synonyms:

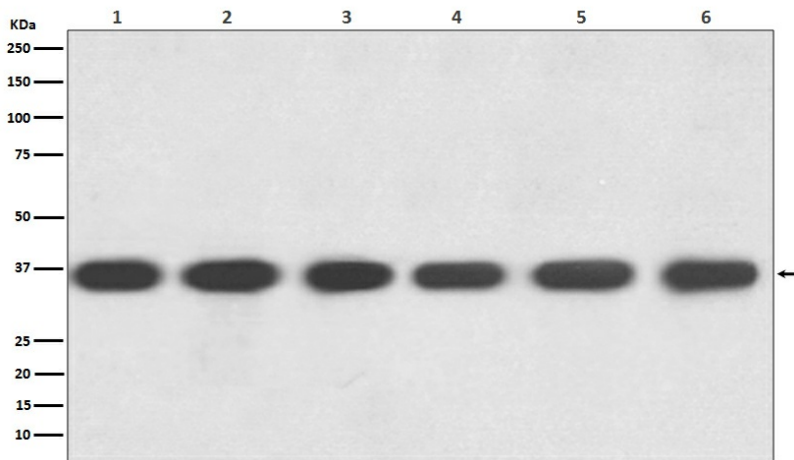
aging-associated gene 9 protein; G3P; G3PD; GAPD; GAPDH; Glyceraldehyde-3-phosphate dehydrogenase; glyceraldehyde 3-phosphate dehydrogenase; MGC88685

Product images:



All lanes use GAPDH Antibody at 1:50000 dilution for 1 hour at room temperature.

All lanes use GAPDH Antibody at 1:50000 dilution for 1 hour at room temperature.



Western blot analysis of GAPDH expression in (1) Hela cell lysate; (2) Jurkat cell lysate; (3) Mouse kidney lysate; (4) Mouse spleen lysate; (5) RAW 264.7 cell lysate; (6) Rat brain lysate with GAPDH Antibody.