

Product datasheet for **TA424445**

beta III Tubulin (TUBB3) Rabbit Monoclonal Antibody

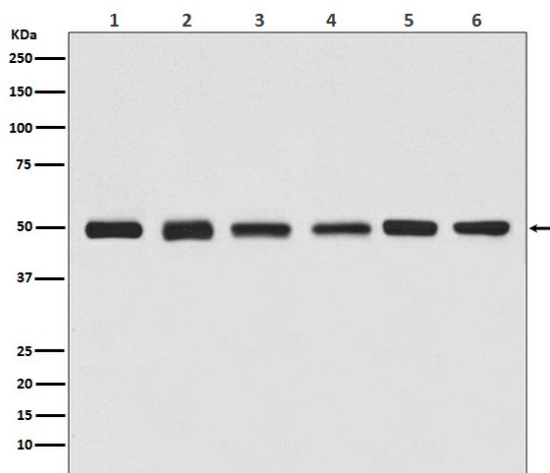
Product data:

Product Type:	Primary Antibodies
Applications:	WB
Recommended Dilution:	WB 1:5000~1:20000
Reactivity:	Human, Mouse, Rat
Host:	Rabbit
Isotype:	IgG
Clonality:	Monoclonal
Immunogen:	A synthesized peptide derived from human beta Tubulin
Specificity:	beta Tubulin Antibody (HRP conjugated) detects endogenous levels of total beta Tubulin
Formulation:	Rabbit IgG in phosphate buffered saline , pH 7.4, 150mM NaCl, 0.02% sodium azide and 50% glycerol.
Concentration:	lot specific
Purification:	Affinity-chromatography
Conjugation:	Unconjugated
Storage:	Store at +4°C short term. Store at -21°C long term. Avoid freeze / thaw cycle.
Predicted Protein Size:	50kDa
Gene Name:	tubulin beta 3 class III
Database Link:	Entrez Gene 10381 Human Q13509
Background:	Microtubules are constituent parts of the mitotic apparatus, cilia, flagella, and elements of the cytoskeleton. They consist principally of 2 soluble proteins, alpha- and beta-tubulin, each of about 55,000 kDa. Antibodies against beta Tubulin are useful as loading controls for Western Blotting. However it should be noted that levels of beta-Tubulin may not be stable in certain cells. For example, expression of beta-Tubulin in adipose tissue is very low and therefore beta-Tubulin should not be used as loading control for these tissues.
Synonyms:	beta-4; CFEOM3A; MC1R; TBB3; TUBB3; TUBB4; tubulin, beta, 4,beta tubulin; tubulin, beta 3; Tubulin beta-3 chain; tubulin beta-4; Tubulin beta-4 chain; Tubulin beta-III



[View online »](#)

Product images:



Western blot analysis of beta Tubulin expression in (1) Jurkat cell lysate, (2) Human kidney lysate, (3) 3T3 cell lysate, (4) Mouse brain lysate, (5) C6 cell lysate, (6) Rat heart lysate.