

Product datasheet for **TA424444**

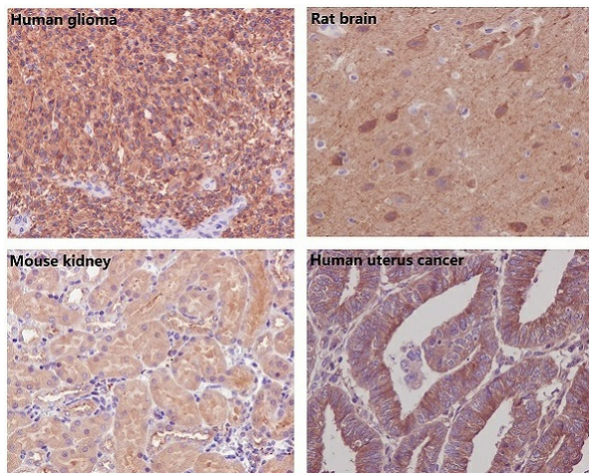
beta V Tubulin (TUBB) Rabbit Monoclonal Antibody

Product data:

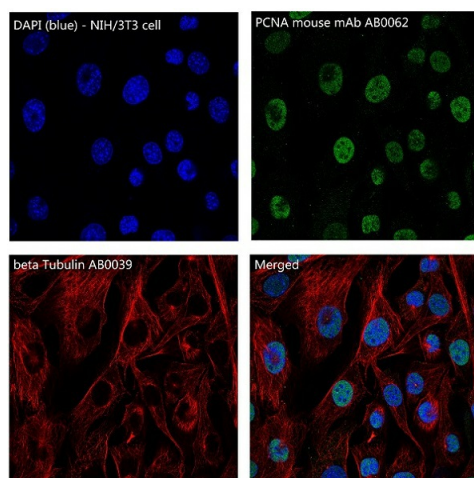
Product Type:	Primary Antibodies
Applications:	FC, ICC/IF, IHC, WB
Recommended Dilution:	WB 1:3000~1:20000 IHC 1:50~1:200 ICC/IF 1:50~1:200 FC 1:100
Reactivity:	Human, Mouse, Rat
Host:	Rabbit
Isotype:	IgG
Clonality:	Monoclonal
Immunogen:	A synthesized peptide derived from human beta Tubulin
Specificity:	beta Tubulin Antibody detects endogenous levels of total beta Tubulin
Formulation:	Rabbit IgG in phosphate buffered saline , pH 7.4, 150mM NaCl, 0.02% sodium azide and 50% glycerol.
Concentration:	lot specific
Purification:	Affinity-chromatography
Conjugation:	Unconjugated
Storage:	Store at +4°C short term. Store at -21°C long term. Avoid freeze / thaw cycle.
Predicted Protein Size:	50kDa
Gene Name:	tubulin beta class I
Database Link:	Entrez Gene 203068 Human P07437
Background:	Tubulin is the major constituent of microtubules. It binds two moles of GTP, one at an exchangeable site on the beta chain and one at a non-exchangeable site on the alpha-chain.
Synonyms:	Beta1 tubulin; Beta 4 tubulin; Beta 5 tubulin; Tubulin beta chain; Tubulin beta class I


[View online »](#)

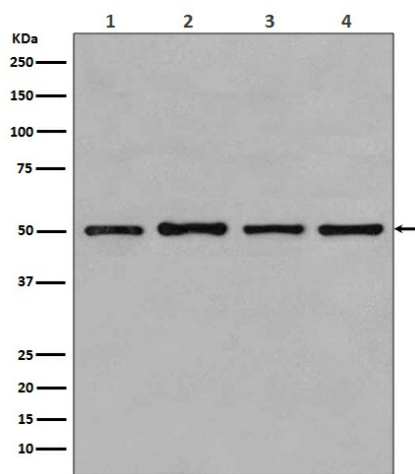
Product images:



Immunohistochemical analysis of paraffin-embedded (1) Human glioma; (2) Rat brain; (3) Mouse kidney; (4) Human uterus cancer, using beta Tubulin Antibody.



Immunofluorescent analysis of NIH/3T3 cells, using beta Tubulin Antibody .



Western blot analysis of beta Tubulin expression in (1) MCF-7 cell lysate; (2) COS-1 cell lysate; (3) Jurkat cell lysate; (4) HeLa cell lysate.