

Product datasheet for TA424442

TUBBI Rabbit Monoclonal Antibody [Clone ID: OTIRA2261]

Product data:

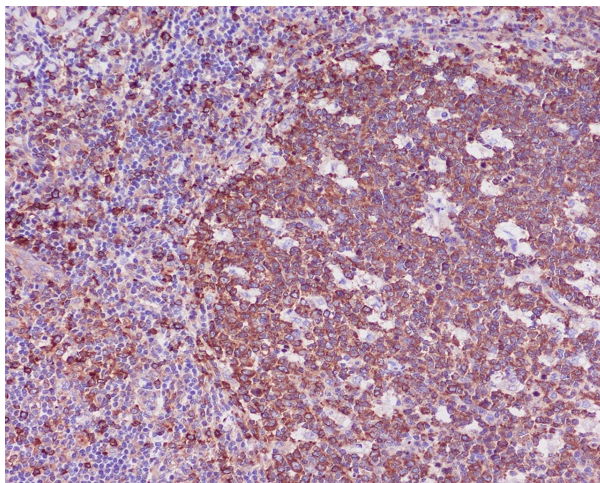
Product Type:	Primary Antibodies
Clone Name:	OTIRA2261
Applications:	FC, ICC, ICC/IF, IHC, WB
Recommended Dilution:	WB:1/5000-10000;IHC:1/100-500;ICC/IF:1/100-500;FC:1/100-500
Reactivity:	Human, Mouse, Rat, Cow, Dog, Monkey
Host:	Rabbit
Isotype:	IgG
Clonality:	Monoclonal
Immunogen:	A synthesized peptide derived from human beta I Tubulin
Specificity:	beta I Tubulin Antibody detects endogenous levels of total beta I Tubulin
Formulation:	Rabbit IgG in 10mM phosphate buffered saline , pH 7.4, 150mM sodium chloride, 0.05% BSA, 0.02% sodium azide and 50% glycerol.
Concentration:	lot specific
Purification:	Affinity-chromatography
Conjugation:	Unconjugated
Storage:	Store at +4°C short term. Store at -20°C long term. Avoid freeze / thaw cycle.
Predicted Protein Size:	50kDa
Gene Name:	tubulin beta 1 class VI
Database Link:	Entrez Gene 81027 Human Q9H4B7
Background:	Tubulin is the major constituent of microtubules. It binds two moles of GTP, one at an exchangeable site on the beta chain and one at a non-exchangeable site on the alpha chain (By similarity).



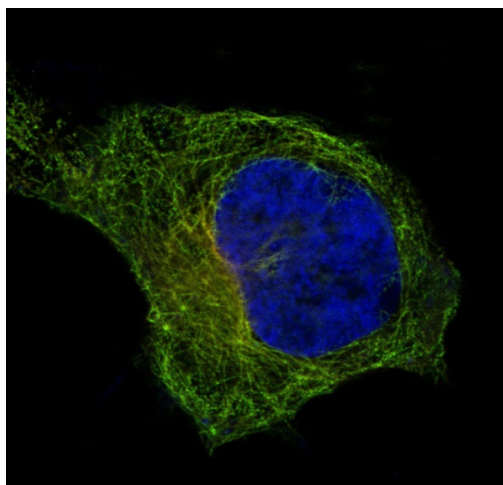
[View online »](#)

Synonyms: Beta tubulin 1, class VI; Class VI beta tubulin antibody; TBB1_HUMAN; TUBB1; Tubulin, beta 1 antibody; Tubulin beta 1 class VI

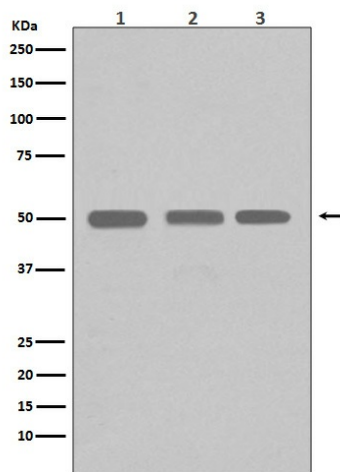
Product images:



Immunohistochemical analysis of paraffin-embedded human tonsil, using beta I Tubulin Antibody.



Immunofluorescent analysis of HeLa cells, using beta I Tubulin Antibody .



Western blot analysis of beta I Tubulin expression in (1) K562 cell lysate; (2) Jurkat cell lysate; (3) HeLa cell lysate; (4) 293T cell lysate using beta I Tubulin antibody.