

Product datasheet for **TA424441**

beta Actin (ACTB) Rabbit Monoclonal Antibody [Clone ID: OTIRA2260]

Product data:

Product Type:	Primary Antibodies
Clone Name:	OTIRA2260
Applications:	ICC/IF, IHC, WB
Recommended Dilution:	WB 1:5000~1:50000 IHC 1:50~1:200 ICC/IF 1:50~1:200
Reactivity:	Human, Mouse, Rat
Host:	Rabbit
Isotype:	IgG
Clonality:	Monoclonal
Immunogen:	A synthesized peptide derived from human beta Actin
Specificity:	beta Actin Antibody detects endogenous levels of total beta-Actin protein.
Formulation:	Rabbit IgG in 10mM phosphate buffered saline , pH 7.4, 150mM sodium chloride, 0.05% BSA, 0.02% sodium azide and 50% glycerol.
Concentration:	lot specific
Purification:	Affinity-chromatography
Conjugation:	Unconjugated
Storage:	Store at +4°C short term. Store at -24°C long term. Avoid freeze / thaw cycle.
Predicted Protein Size:	42kDa
Gene Name:	actin, beta
Database Link:	Entrez Gene 60 Human P60709

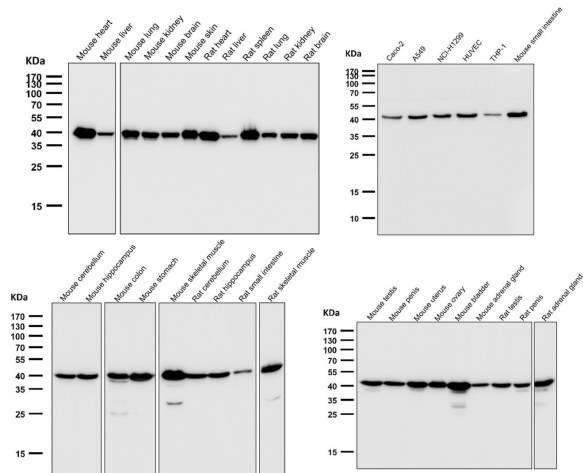


Background:

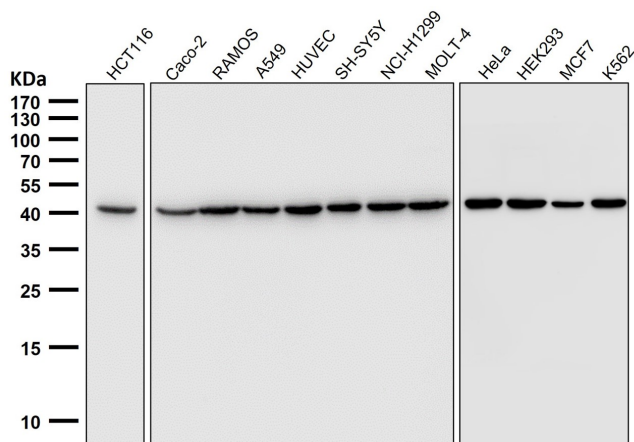
beta-Actin is one of six different actin isoforms that have been identified. The actin molecules found in cells of various species and tissues tend to be very similar in their immunological and physical properties. Therefore, Antibodies against beta-Actin are useful as loading controls for Western Blotting. However it should be noted that levels of beta-Actin may not be stable in certain cells. For example, expression of beta-Actin in adipose tissue is very low and therefore it should not be used as loading control for these tissues.

Synonyms:

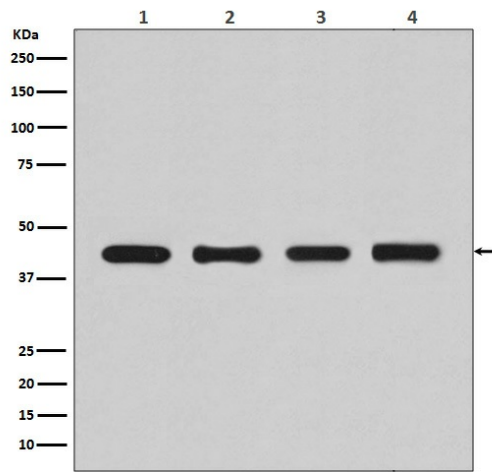
ACTB; ACTIN; actin beta; BETA-ACTIN; beta actin

Product images:


All lanes use TA424441 beta Actin Antibody at 1:40000 dilution for 1 hour at room temperature.



All lanes use TA424441 beta Actin Antibody at 1:50000 dilution for 1 hour at room temperature.



Western blot analysis of beta Actin expression in (1) HeLa cell lysate; (2) Human fetal kidney lysate; (3) NIH/3T3 cell lysate; (4) PC-12 cell lysate.