

Product datasheet for **TA424440**

alpha Tubulin (TUBA4A) Rabbit Monoclonal Antibody [Clone ID: OTIRA2259]

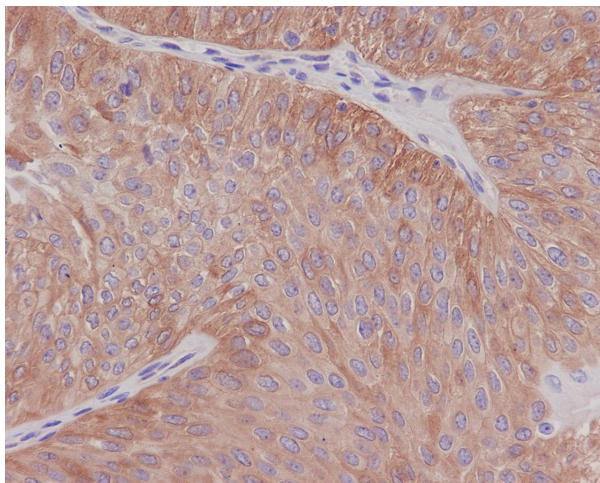
Product data:

Product Type:	Primary Antibodies
Clone Name:	OTIRA2259
Applications:	FC, ICC/IF, IHC, IP, WB
Recommended Dilution:	WB 1:1000~1:5000 IHC 1:50~1:200 ICC/IF 1:50~1:200 IP 1:50 FC 1:50
Reactivity:	Human, Mouse, Rat
Host:	Rabbit
Isotype:	IgG
Clonality:	Monoclonal
Immunogen:	A synthesized peptide derived from human alpha Tubulin
Specificity:	alpha Tubulin Antibody detects endogenous levels of total alpha Tubulin
Formulation:	Rabbit IgG in 10mM phosphate buffered saline , pH 7.4, 150mM sodium chloride, 0.05% BSA, 0.02% sodium azide and 50% glycerol.
Concentration:	lot specific
Purification:	Affinity-chromatography
Conjugation:	Unconjugated
Storage:	Store at +4°C short term. Store at -24°C long term. Avoid freeze / thaw cycle.
Predicted Protein Size:	50kDa
Gene Name:	tubulin alpha 4a
Database Link:	Entrez Gene 7277 Human P68366
Background:	Tubulin is the major constituent of microtubules. It binds two moles of GTP, one at an exchangeable site on the beta chain and one at a non-exchangeable site on the alpha chain.

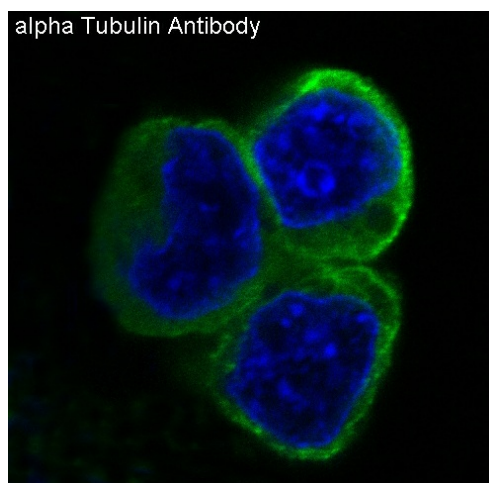


Synonyms: bA408E5.3; B ALPHA 1; Tuba4α; Tubulin, alpha 4α; Tubulin H2-alpha

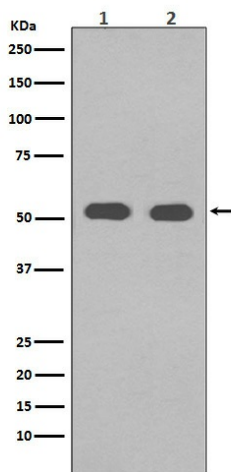
Product images:



Immunohistochemical analysis of paraffin-embedded human bladder, using alpha Tubulin Antibody.



Immunofluorescent analysis of 293 cells, using alpha Tubulin Antibody .



Western blot analysis of alpha Tubulin in (1) Hela cell lysate; (2) NIH/3T3 cell lysate.