

Product datasheet for **TA424425**

TSFM Rabbit Monoclonal Antibody [Clone ID: OTIRA2244]

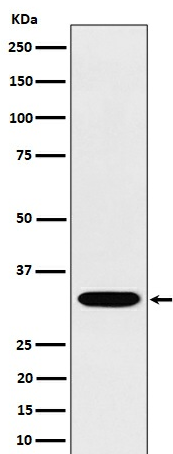
Product data:

Product Type:	Primary Antibodies
Clone Name:	OTIRA2244
Applications:	ICC/IF, IP, WB
Recommended Dilution:	WB 1:500~1:2000 ICC/IF 1:50~1:200 IP 1:50
Reactivity:	Human, Mouse, Rat
Host:	Rabbit
Isotype:	IgG
Clonality:	Monoclonal
Immunogen:	A synthesized peptide derived from human TSFM
Specificity:	TSFM Antibody detects endogenous levels of total TSFM
Formulation:	Rabbit IgG in 10mM phosphate buffered saline , pH 7.4, 150mM sodium chloride, 0.05% BSA, 0.02% sodium azide and 50% glycerol.
Concentration:	lot specific
Purification:	Affinity-chromatography
Conjugation:	Unconjugated
Storage:	Store at +4°C short term. Store at -21°C long term. Avoid freeze / thaw cycle.
Predicted Protein Size:	32kDa
Gene Name:	Ts translation elongation factor, mitochondrial
Database Link:	Entrez Gene 10102 Human P43897
Background:	Associates with the EF-Tu.GDP complex and induces the exchange of GDP to GTP. It remains bound to the aminoacyl-tRNA.EF-Tu.GTP complex up to the GTP hydrolysis stage on the ribosome.



Synonyms: COXPD3; EFTS; EFTSMT; TSFM; TSMT

Product images:



Western blot analysis of TSFM expression in Jurkat cell lysate.